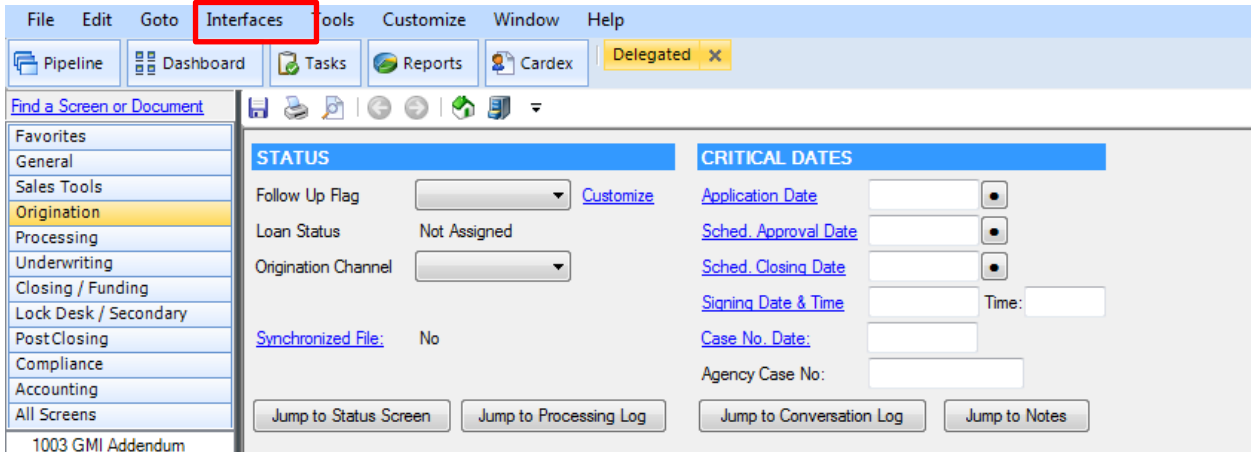


Order Delegated MI with BytePro

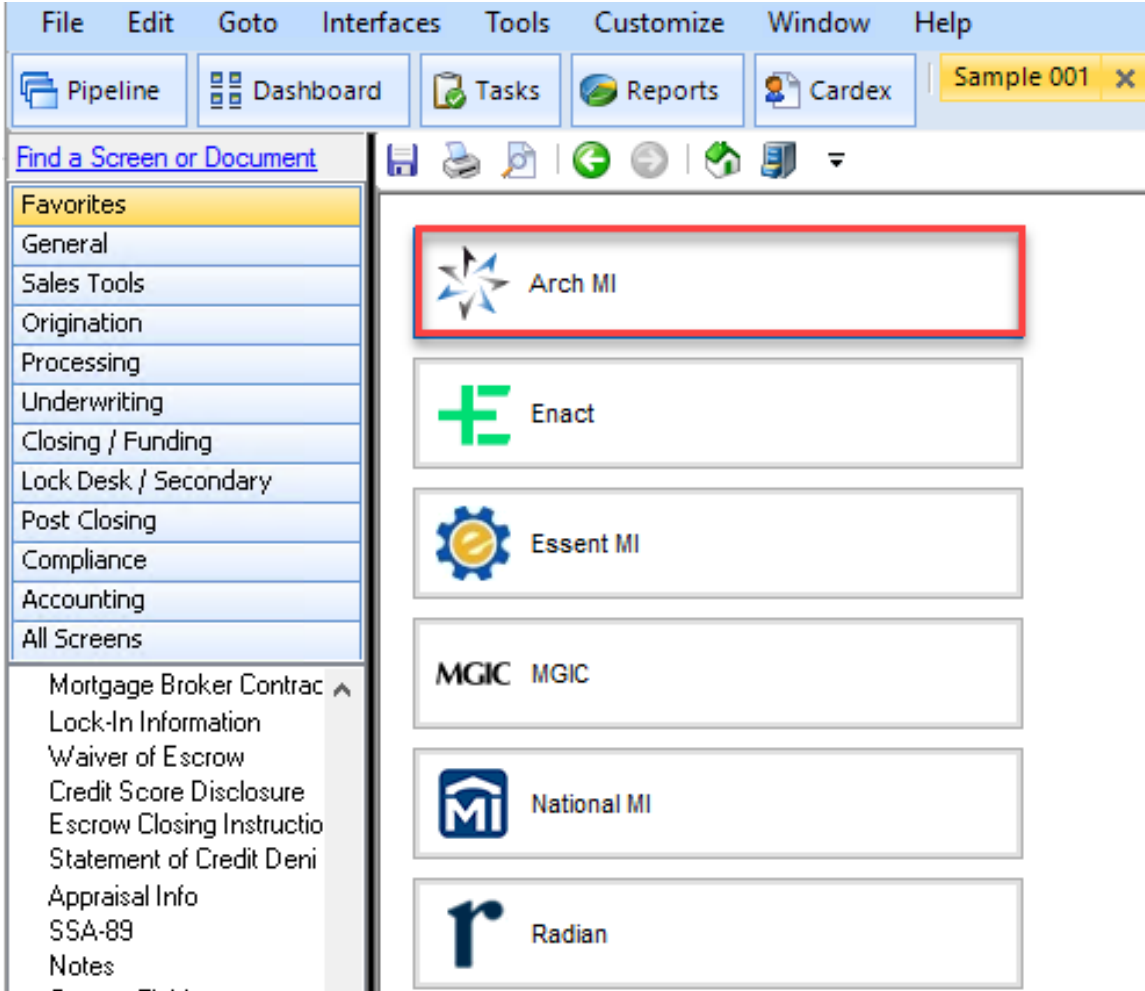


Request Rates from BytePro

1. Select Loan from your **Pipeline**.
2. Select **Interfaces, Mortgage Insurance**.



3. Select **Arch MI**. The Arch MI screen displays.



- Select **Delegated** in the **MI Underwriting Method** drop-down box. Enter applicable Loan Program code in the **Special Program Code** box. Select the appropriate Premium Plan in **PMI Type** drop-down box. Click **Order MI Certificate**.

Arch MI
✕

Get Quote
Order MI Certificate
Check Status

Provider
[Arch MI Web Site](#)

[Defaults](#)

Rate Quote ID:

Certificate No.:

Coverage %: %

MI Underwriting Method: Delegated

Special Program Code: HomeReady

MI Company: Arch Mortgage Insu

Purchase Price:

Base Loan: [Calculate](#)

PMI Type: Monthly Non-Refundable

MIP Percent: % Financed

Loan with MIP/FF:

MIP/FF Paid in Cash:

Monthly MI Premium: % yr 11-30; %

Monthly MI Payment:

MI Prem Pd in Adv: % \$

Months in Advance:

Documents (double-click on a document to view it)

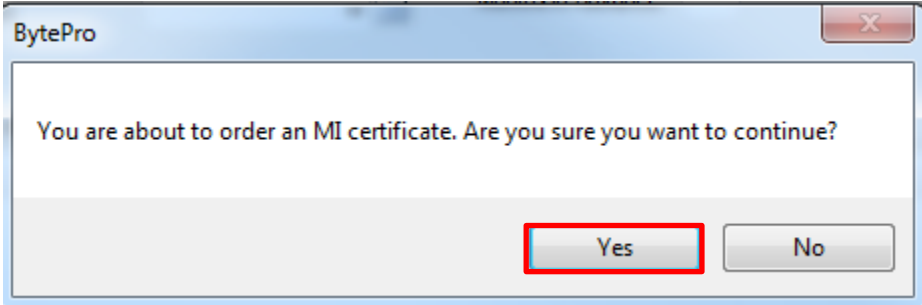
Date	Name

Status Messages (double-click to view long messages)

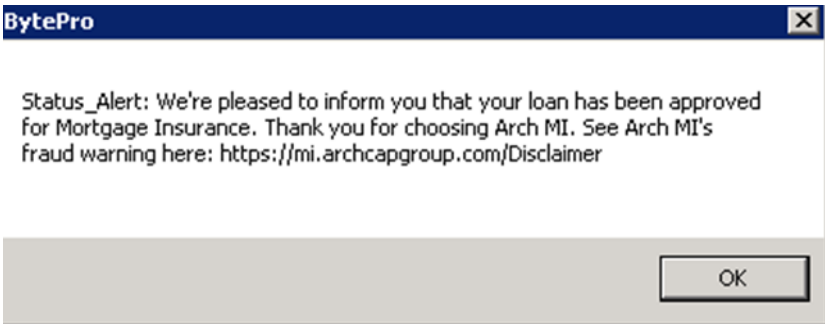
Date	Message
8/1/24 3:07:27 PM	Rate Quote ID(s): M244513861S80344. Rate quotes generated are estimates based on the INFORMATION...

Close

- 5. A confirmation message displays. Select **Yes** to order Delegated MI.



- 6. A message displays indicating your MI request has been approved for Mortgage Insurance. Click **OK**.



- The Arch MI screen displays. In the **Documents** section, double-click the **MI Certificate** to view your MI Certificate PDF. The MI Certificate is also stored in your **Stored Documents** folder. MI rates are automatically imported into BytePro.

Arch MI
✕

Get Quote
Order MI Certificate
Check Status

Provider

[Arch MI Web Site](#)

[Defaults](#)

Rate Quote ID:

Certificate No.:

Coverage %: %

MI Underwriting Method:

Special Program Code:

MI Company:

Purchase Price:

Base Loan: [Calculate](#)

PMI Type:

MIP Percent: %

Loan with MIP/FF:

MIP/FF Paid in Cash:

Monthly MI Premium: % yr 11-30; %

Monthly MI Payment:

MI Prem Pd in Adv: % \$

Months in Advance:

Documents (double-click on a document to view it)

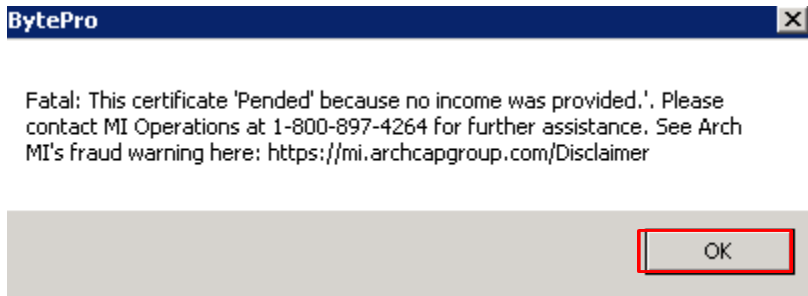
Date	Name
8/1/24 3:15:02 PM	MI Certificate
8/1/24 3:07:27 PM	MI Rate Quote
8/1/24 2:45:17 PM	MI Rate Quote

Status Messages (double-click to view long messages)

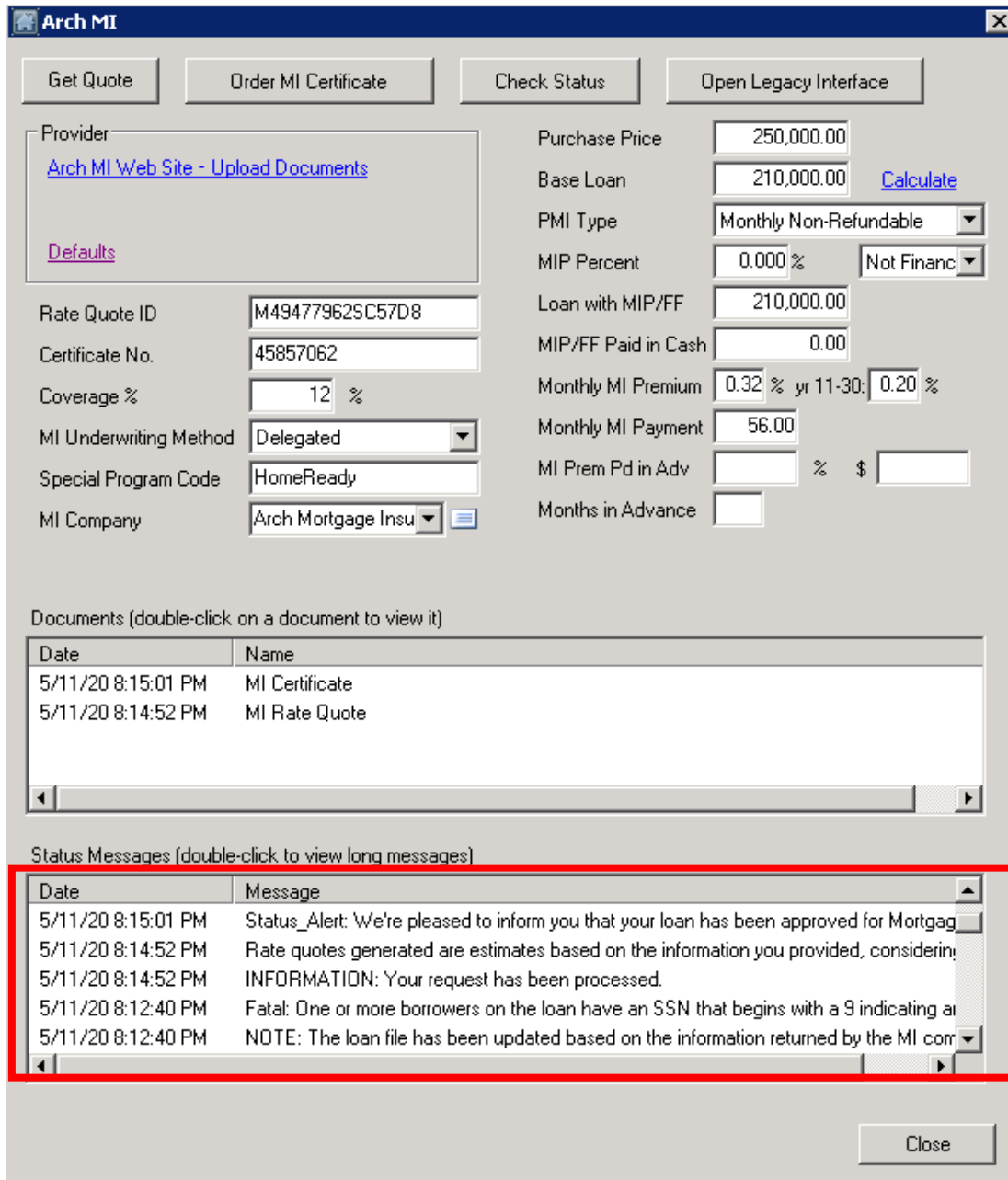
Date	Message
8/1/24 3:15:02 PM	Status_Alert: We're pleased to inform you that your loan has been approved for Mortgag
8/1/24 3:07:27 PM	Rate Quote ID(s): M244513861S80344. Rate quotes generated are estimates based on
8/1/24 2:45:17 PM	INFORMATION: Your request has been processed

Close

- If your loan suspends, an error message displays. Click **OK**.



- All messages display in the **Status Messages** section.



- Once your loan is approved, select **Check Status**. A Status Alert will display that the loan has been approved. In the **Documents** section, double-click the **MI Certificate** to view your MI Certificate PDF. MI Rates automatically import into BytePro.

Arch MI
✕

Get Quote
Order MI Certificate
Check Status

Provider

[Arch MI Web Site](#)

[Defaults](#)

Purchase Price	<input type="text" value="400,000.00"/>
Base Loan	<input type="text" value="330,000.00"/> Calculate
PMI Type	Monthly Non-Refundable ▾
MIP Percent	<input type="text" value="0.000"/> % Financed ▾
Loan with MIP/FF	<input type="text" value="330,000.00"/>
MIP/FF Paid in Cash	<input type="text" value="0.00"/>
Monthly MI Premium	<input type="text" value="0.427"/> % yr 11-30: <input type="text" value="0.213"/> %
Monthly MI Payment	<input type="text" value="117.48"/>
MI Prem Pd in Adv	<input type="text"/> % \$ <input type="text"/>
Months in Advance	<input type="text"/>

Rate Quote ID	<input type="text" value="M244513861S80344"/>
Certificate No.	<input type="text" value="97242112"/>
Coverage %	<input type="text" value="25"/> %
MI Underwriting Method	Delegated ▾
Special Program Code	<input type="text" value="HomeReady"/>
MI Company	Arch Mortgage Insu ▾

Documents (double-click on a document to view it)

Date	Name
8/1/24 3:15:02 PM	MI Certificate
8/1/24 3:07:27 PM	MI Rate Quote
8/1/24 2:45:17 PM	MI Rate Quote

Status Messages (double-click to view long messages)

Date	Message
8/1/24 3:15:02 PM	Status_Alert: We're pleased to inform you that your loan has been approved for Mortgag
8/1/24 3:07:27 PM	MI Rate Quote
8/1/24 2:45:17 PM	INFORMATION: Your request has been processed

Close

