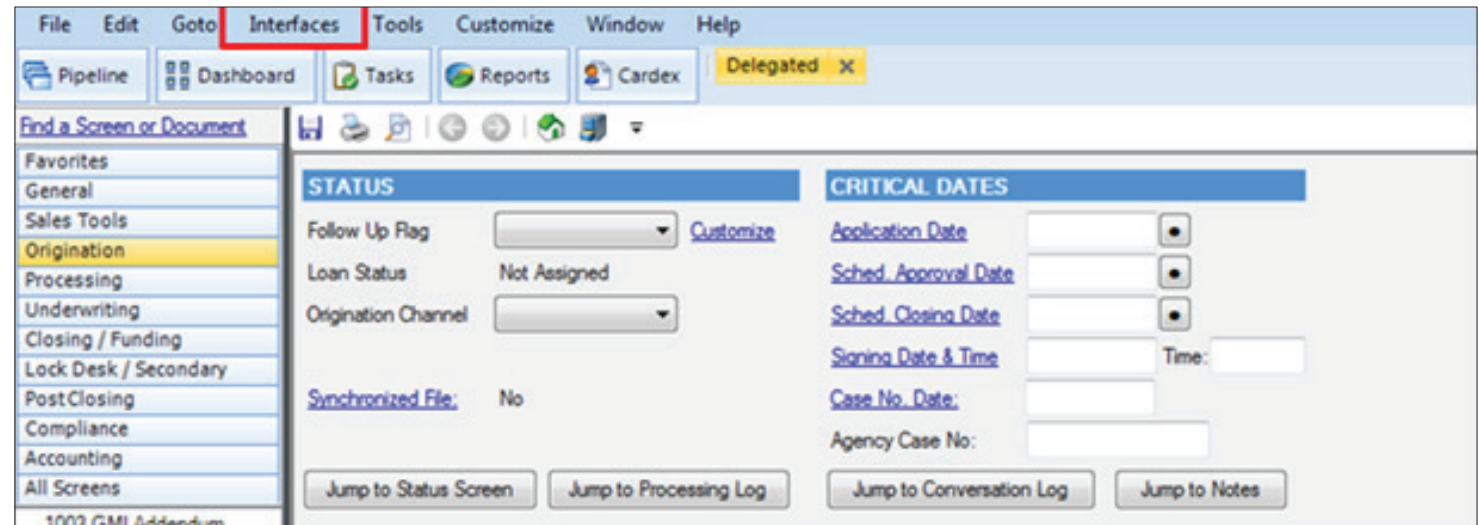
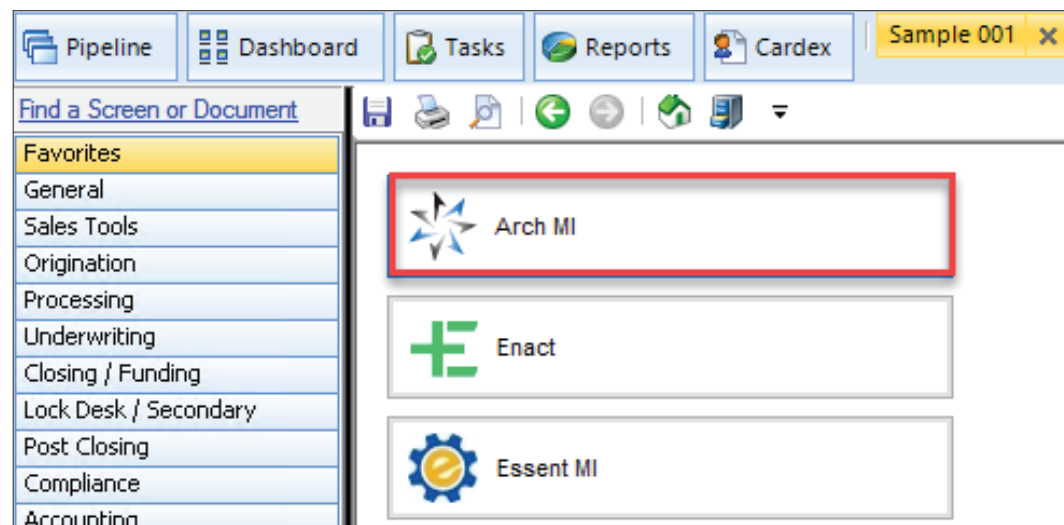




1. Select loan from your Pipeline.
2. Select **Interfaces, Origination.**



3. Select **Arch MI**. The Arch MI screen displays.



4. Select **Non-Delegated** in the **MI Underwriting Method** drop-down box. Enter applicable Loan Program code in the **Special Program Code** box. Select the appropriate Premium Plan in the **PMI Type** drop-down box. Click **Order MI Certificate**.

Get Quote
Order MI Certificate
Check Status

Provider
[Arch MI Web Site](#)

[Defaults](#)

Rate Quote ID:

Certificate No.:

Coverage %: %

MI Underwriting Method:

Special Program Code:

MI Company:

Estimated Value:

Base Loan: [Calculate](#)

PMI Type:

MIP Percent: %

Loan with MIP/FF:

MIP/FF Paid in Cash:

Monthly MI Premium: % yr 11-30: %

Monthly MI Payment:

MI Prem Pd in Adv: % \$

Months in Advance:

Documents (double-click on a document to view it)

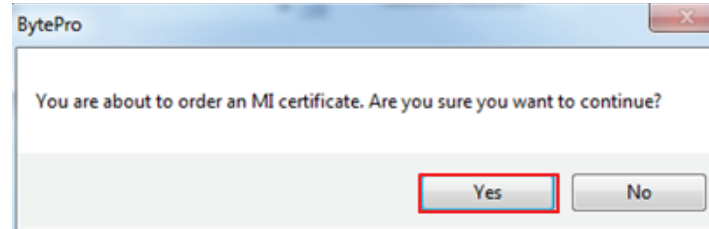
Date	Name
8/1/24 3:59:13 PM	MI Rate Quote

Status Messages (double-click to view long messages)

Date	Message
8/1/24 3:59:13 PM	Rate Quote ID(s): M244514077S03483. Rate quotes generated are estimates based on the
8/1/24 3:59:13 PM	INFORMATION: Your request has been processed.

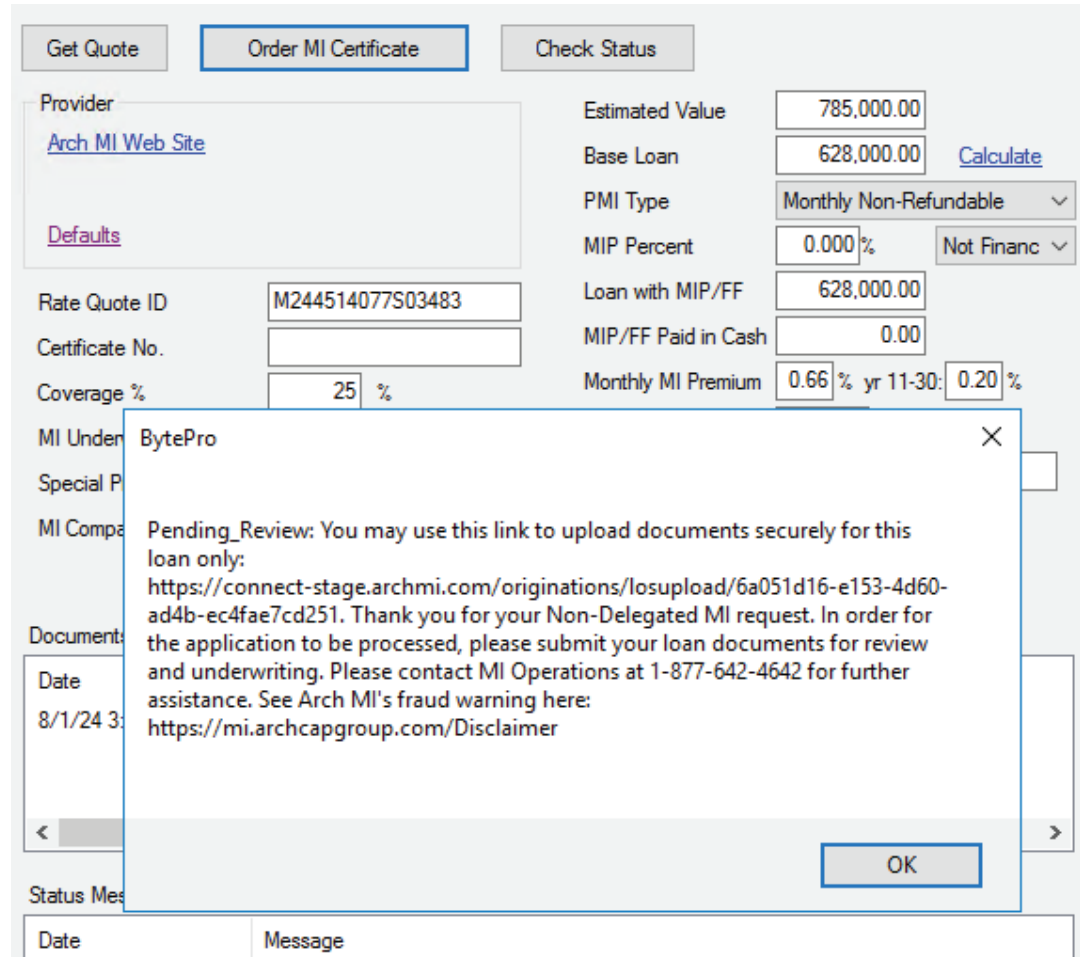
Close

5. A confirmation message displays. Select **Yes** to order Non-Delegated MI.



6. A Pending Review message displays a secured document link and instructions to submit your loan documents for review.

7. Click **OK**.



The screenshot shows the "Order MI Certificate" interface. At the top, there are three buttons: "Get Quote", "Order MI Certificate" (highlighted with a blue border), and "Check Status". Below these are several input fields and dropdown menus:

- Provider: Arch MI Web Site (with a link) and Defaults (with a link)
- Rate Quote ID: M244514077S03483
- Certificate No. (empty field)
- Coverage %: 25 %
- MI Underwriting (empty field)
- Special P (empty field)
- MI Comp (empty field)
- Documents (empty field)
- Date: 8/1/24 3: (empty field)
- Status Mes (empty field)

On the right side, there are several numerical and dropdown values:

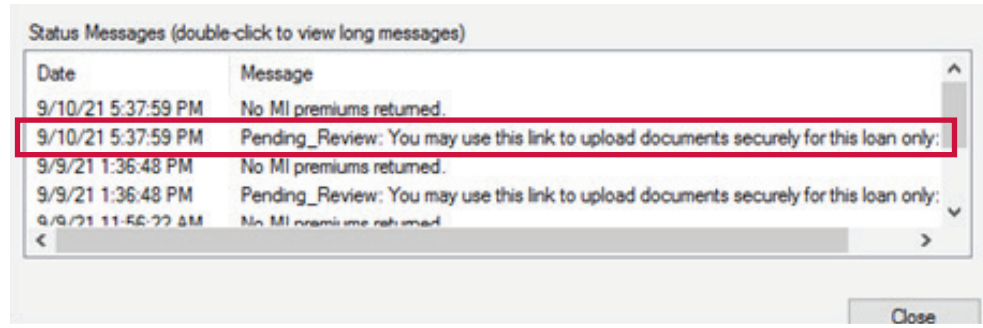
- Estimated Value: 785,000.00
- Base Loan: 628,000.00 (with a "Calculate" link)
- PMI Type: Monthly Non-Refundable (dropdown)
- MIP Percent: 0.000% (with a "Not Financ" dropdown)
- Loan with MIP/FF: 628,000.00
- MIP/FF Paid in Cash: 0.00
- Monthly MI Premium: 0.66 % yr 11-30: 0.20 %

A "Pending Review" dialog box is overlaid on the interface. It contains the following text:

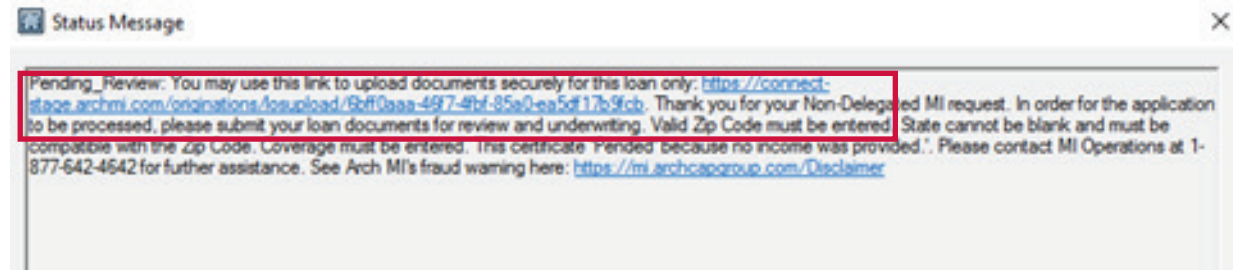
Pending_Review: You may use this link to upload documents securely for this loan only:
<https://connect-stage.archmi.com/originations/losupload/6a051d16-e153-4d60-ad4b-ec4fae7cd251>. Thank you for your Non-Delegated MI request. In order for the application to be processed, please submit your loan documents for review and underwriting. Please contact MI Operations at 1-877-642-4642 for further assistance. See Arch MI's fraud warning here:
<https://mi.archcapgroup.com/Disclaimer>

At the bottom of the dialog box is an "OK" button.

8. From the Status Message window, Double click on the **Pending Review** message.

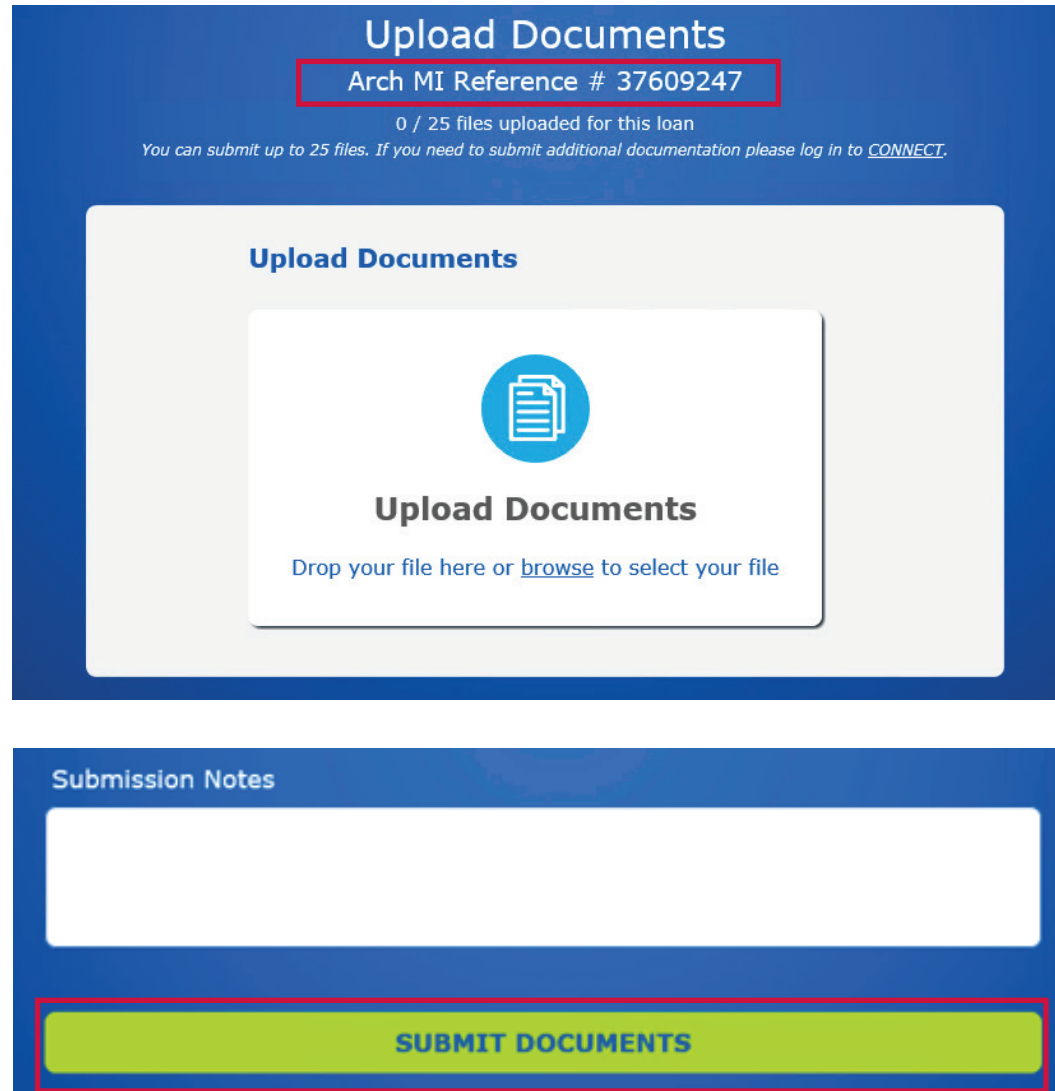


9. Click the blue Secured upload doc hyperlink. The secure link applies only to the specific loan that was submitted.



10. The webpage will open.
Validate the Certificate # at the top of the screen in the **Arch MI Reference #** tag.
11. Select files from your computer through browsing or dragging and dropping them into the window

You may:
 - a. Upload up to 25 files.
 - b. Add comments for Arch MI underwriting in the "Submission Notes" section.
12. Click the **Submit Documents** button when ready.



Upload Documents
Arch MI Reference # 37609247
0 / 25 files uploaded for this loan
You can submit up to 25 files. If you need to submit additional documentation please log in to [CONNECT](#).

Upload Documents
Drop your file here or [browse](#) to select your file

Submission Notes

SUBMIT DOCUMENTS

13. Once all documents are uploaded, the acknowledgment will be displayed.

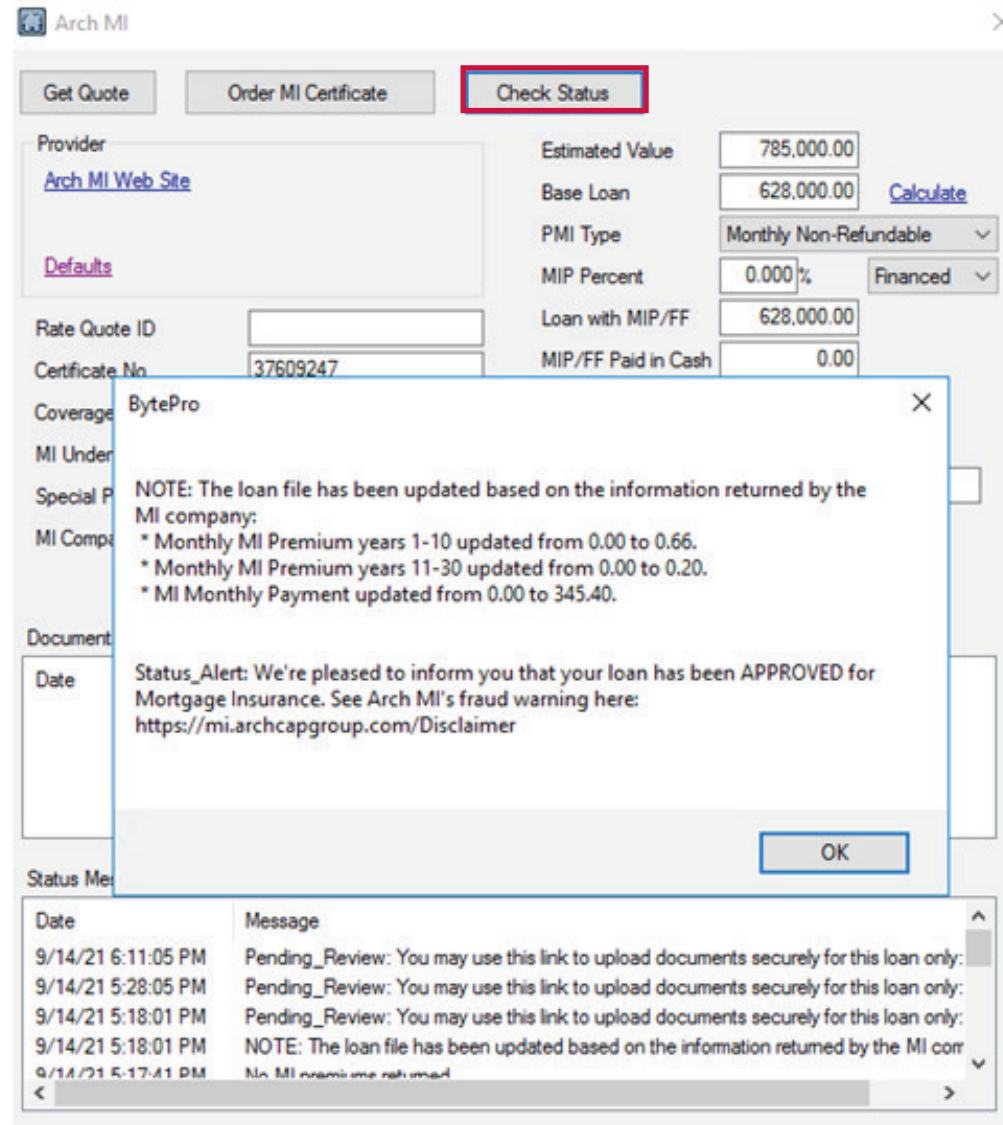
Note: The MI Certificate-specific Link will remain active to upload additional underwriting documents for 24 hours from the date of the last MI Application submission. For security reasons, the URL will expire after this.



The screenshot shows a confirmation page for an Arch MI Full-File Application. It includes the Arch MI logo, the title 'Full-File Application', and a submission timestamp of 09/17/2021 14:15 PDT. A message of thanks is provided, along with contact information for 877.MI.CHOICE. A table at the bottom lists the Arch MI Reference # as 37609247, the document as 'ky quote.pdf', and the submission notes.

Arch MI Reference #:	37609247
Documents:	ky quote.pdf
Submission Notes:	

14. When your loan is approved, click **Check Status**. A message displays stating your loan is approved.



Arch MI

Get Quote Order MI Certificate **Check Status**

Provider: [Arch MI Web Site](#) Estimated Value: 785,000.00
 Base Loan: 628,000.00 Calculate
 PMI Type: Monthly Non-Refundable
 MIP Percent: 0.000% Financed
 Loan with MIP/FF: 628,000.00
 MIP/FF Paid in Cash: 0.00

Rate Quote ID:
 Certificate No: 37609247

Coverage: BytePro

MI Under:

Special P:

MI Comp:

Document:

Date:

Status Mes:

NOTE: The loan file has been updated based on the information returned by the MI company:
 * Monthly MI Premium years 1-10 updated from 0.00 to 0.66.
 * Monthly MI Premium years 11-30 updated from 0.00 to 0.20.
 * MI Monthly Payment updated from 0.00 to 345.40.

Status_Alert: We're pleased to inform you that your loan has been APPROVED for Mortgage Insurance. See Arch MI's fraud warning here: <https://mi.archcapgroup.com/Disclaimer>

Date	Message
9/14/21 6:11:05 PM	Pending_Review: You may use this link to upload documents securely for this loan only:
9/14/21 5:28:05 PM	Pending_Review: You may use this link to upload documents securely for this loan only:
9/14/21 5:18:01 PM	Pending_Review: You may use this link to upload documents securely for this loan only:
9/14/21 5:18:01 PM	NOTE: The loan file has been updated based on the information returned by the MI corr
9/14/21 5:17:41 PM	No MI premiums returned

15. Premium rates are returned, and the Commitment is in the **Documents** section. Double-click **MI Certificate** to view your MI Certificate PDF. The MI Certificate is also available in your **Stored Documents** folder. MI rates are automatically imported into BytePro.

Arch MI
✕

Get Quote
Order MI Certificate
Check Status

Provider
[Arch MI Web Site](#)

[Defaults](#)

Rate Quote ID:

Certificate No.:

Coverage %: %

MI Underwriting Method:

Special Program Code:

MI Company:

Estimated Value:

Base Loan: [Calculate](#)

PMI Type:

MIP Percent: %

Loan with MIP/FF:

MIP/FF Paid in Cash:

Monthly MI Premium: % yr 11-30: %

Monthly MI Payment:

MI Prem Pd in Adv: % \$

Months in Advance:

Documents (double-click on a document to view it)

Date	Name
8/1/24 4:17:10 PM	MI Certificate
8/1/24 3:59:13 PM	MI Rate Quote

Status Messages (double-click to view long messages)

Time	Message
8/1/24 4:17:10 PM	Status_Alert: We're pleased to inform you that your loan has been APPROVED for Mortgage
8/1/24 4:13:28 PM	Status_Alert: In order for your non-delegated application to be processed, please submit your
8/1/24 4:03:13 PM	Pending_Review: You may use this link to upload documents securely for this loan only: http
8/1/24 3:59:13 PM	Rate Quote ID(s): M244514077S03483. Rate quotes generated are estimates based on the
8/1/24 3:59:13 PM	INFORMATION: Your request has been processed