



PROPERTY AND CASUALTY COMPANIES - ASSOCIATION EDITION

QUARTERLY STATEMENT

AS OF JUNE 30, 2021

OF THE CONDITION AND AFFAIRS OF THE

UNITED GUARANTY RESIDENTIAL INSURANCE COMPANY

NAIC Group Code 1279 1279 NAIC Company Code 15873 Employer's ID Number 42-0885398
(Current) (Prior)

Organized under the Laws of North Carolina State of Domicile or Port of Entry NC

Country of Domicile United States of America

Incorporated/Organized 11/27/1963 Commenced Business 12/18/1963

Statutory Home Office 230 North Elm Street Greensboro, NC, US 27401
(Street and Number) (City or Town, State, Country and Zip Code)

Main Administrative Office 230 North Elm Street
(Street and Number)
Greensboro, NC, US 27401 800-334-8966
(City or Town, State, Country and Zip Code) (Area Code) (Telephone Number)

Mail Address Post Office Box 20597 Greensboro, NC, US 27420
(Street and Number or P. O. Box) (City or Town, State, Country and Zip Code)

Primary Location of Books and Records 230 North Elm Street
(Street and Number)
Greensboro, NC, US 27401 800-334-8966
(City or Town, State, Country and Zip Code) (Area Code) (Telephone Number)

Internet Website Address www.archmi.com

Statutory Statement Contact David Lee Dixon 336-412-0800
(Name) (Area Code) (Telephone Number)
statutoryaccountingteam@archmi.com 336-217-4402
(E-mail Address) (FAX Number)

OFFICERS

President & Chief Executive Officer	<u>Robert Michael Schmeiser</u>	Executive Vice President & Chief Financial Officer	<u>Thomas Harrison Jeter</u>
Vice President & Secretary	<u>Theresa Marie Cameron</u>	Senior Vice President & Controller	<u>Brian Joseph Smith</u>

OTHER

<u>Cheryl Ann Feltgen, Executive Vice President & Chief Risk Officer</u>	<u>John Edward Gaines, Executive Vice President, Chief Actuary</u>	<u>Carl Edward Tyree, Executive Vice President & Chief Sales Officer</u>
<u>Trade Renee Cranford, Senior Vice President & Treasurer</u>		

DIRECTORS OR TRUSTEES

<u>Robert Michael Schmeiser</u>	<u>Thomas Harrison Jeter</u>	<u>John Edward Gaines</u>
<u>Carl Edward Tyree</u>	<u>Thomas Michael Hitt</u>	

State of North Carolina SS:
County of Gulford

The officers of this reporting entity being duly sworn, each depose and say that they are the described officers of said reporting entity, and that on the reporting period stated above, all of the herein described assets were the absolute property of the said reporting entity, free and clear from any liens or claims thereon, except as herein stated, and that this statement, together with related exhibits, schedules and explanations therein contained, annexed or referred to, is a full and true statement of all the assets and liabilities and of the condition and affairs of the said reporting entity as of the reporting period stated above, and of its income and deductions therefrom for the period ended, and have been completed in accordance with the NAIC Annual Statement Instructions and Accounting Practices and Procedures manual except to the extent that: (1) state law may differ; or, (2) that state rules or regulations require differences in reporting not related to accounting practices and procedures, according to the best of their information, knowledge and belief, respectively. Furthermore, the scope of this attestation by the described officers also includes the related corresponding electronic filing with the NAIC, when required, that is an exact copy (except for formatting differences due to electronic filing) of the enclosed statement. The electronic filing may be requested by various regulators in lieu of or in addition to the enclosed statement.

		
Robert Michael Schmeiser President & Chief Executive Officer	Theresa Marie Cameron Vice President & Secretary	Thomas Harrison Jeter Executive Vice President & Chief Financial Officer

Subscribed and sworn to before me this 9th day of August 2021
Donna D. Robbins, Notary Public
My commission expires 11-26-2021

a. Is this an original filing? Yes [X] No []
b. If no,
1. State the amendment number.....
2. Date filed
3. Number of pages attached.....

ASSETS

	Current Statement Date			4 December 31 Prior Year Net Admitted Assets
	1 Assets	2 Nonadmitted Assets	3 Net Admitted Assets (Cols. 1 - 2)	
1. Bonds	1,857,022,962	0	1,857,022,962	1,817,684,393
2. Stocks:				
2.1 Preferred stocks	0	0	0	0
2.2 Common stocks	1,536,600	0	1,536,600	0
3. Mortgage loans on real estate:				
3.1 First liens	0	0	0	0
3.2 Other than first liens.....	0	0	0	0
4. Real estate:				
4.1 Properties occupied by the company (less \$0 encumbrances)	0	0	0	0
4.2 Properties held for the production of income (less \$0 encumbrances)	0	0	0	0
4.3 Properties held for sale (less \$0 encumbrances)	0	0	0	0
5. Cash (\$19,349,071), cash equivalents (\$41,049,313) and short-term investments (\$65,003,913)	125,402,297	0	125,402,297	37,614,829
6. Contract loans (including \$0 premium notes)	0	0	0	0
7. Derivatives	0	0	0	0
8. Other invested assets	0	0	0	0
9. Receivables for securities	0	0	0	62,260
10. Securities lending reinvested collateral assets	0	0	0	0
11. Aggregate write-ins for invested assets	0	0	0	0
12. Subtotals, cash and invested assets (Lines 1 to 11)	1,983,961,859	0	1,983,961,859	1,855,361,482
13. Title plants less \$0 charged off (for Title insurers only)	0	0	0	0
14. Investment income due and accrued	8,048,080	0	8,048,080	8,738,740
15. Premiums and considerations:				
15.1 Uncollected premiums and agents' balances in the course of collection	51,316,059	0	51,316,059	51,612,793
15.2 Deferred premiums, agents' balances and installments booked but deferred and not yet due (including \$0 earned but unbilled premiums)	0	0	0	0
15.3 Accrued retrospective premiums (\$0) and contracts subject to redetermination (\$0)	0	0	0	0
16. Reinsurance:				
16.1 Amounts recoverable from reinsurers	142,676	0	142,676	683,394
16.2 Funds held by or deposited with reinsured companies	0	0	0	0
16.3 Other amounts receivable under reinsurance contracts	0	0	0	0
17. Amounts receivable relating to uninsured plans	0	0	0	0
18.1 Current federal and foreign income tax recoverable and interest thereon	0	0	0	0
18.2 Net deferred tax asset	371,358,707	344,513,324	26,845,383	23,659,209
19. Guaranty funds receivable or on deposit	0	0	0	0
20. Electronic data processing equipment and software	237,870	237,870	0	0
21. Furniture and equipment, including health care delivery assets (\$0)	0	0	0	0
22. Net adjustment in assets and liabilities due to foreign exchange rates	0	0	0	0
23. Receivables from parent, subsidiaries and affiliates	5,095,703	0	5,095,703	7,220,263
24. Health care (\$0) and other amounts receivable	0	0	0	0
25. Aggregate write-ins for other than invested assets	7,450,367	6,960,000	490,367	808,028
26. Total assets excluding Separate Accounts, Segregated Accounts and Protected Cell Accounts (Lines 12 to 25)	2,427,611,321	351,711,194	2,075,900,127	1,948,083,909
27. From Separate Accounts, Segregated Accounts and Protected Cell Accounts	0	0	0	0
28. Total (Lines 26 and 27)	2,427,611,321	351,711,194	2,075,900,127	1,948,083,909
DETAILS OF WRITE-INS				
1101.				
1102.				
1103.				
1198. Summary of remaining write-ins for Line 11 from overflow page	0	0	0	0
1199. Totals (Lines 1101 through 1103 plus 1198)(Line 11 above)	0	0	0	0
2501. Licensed purchased	6,900,000	6,900,000	0	0
2502. State premium tax recoverable	488,774	0	488,774	772,928
2503. Prepaid expenses	60,000	60,000	0	0
2598. Summary of remaining write-ins for Line 25 from overflow page	1,593	0	1,593	35,100
2599. Totals (Lines 2501 through 2503 plus 2598)(Line 25 above)	7,450,367	6,960,000	490,367	808,028

STATEMENT AS OF JUNE 30, 2021 OF THE UNITED GUARANTY RESIDENTIAL INSURANCE COMPANY

LIABILITIES, SURPLUS AND OTHER FUNDS

	1 Current Statement Date	2 December 31, Prior Year
1. Losses (current accident year \$28,227,774)	239,755,127	220,255,119
2. Reinsurance payable on paid losses and loss adjustment expenses	0	0
3. Loss adjustment expenses	6,972,192	7,174,320
4. Commissions payable, contingent commissions and other similar charges	0	0
5. Other expenses (excluding taxes, licenses and fees)	604,298	128,215
6. Taxes, licenses and fees (excluding federal and foreign income taxes)	478,234	559,420
7.1 Current federal and foreign income taxes (including \$2,724,864 on realized capital gains (losses))	3,241,917	5,380,404
7.2 Net deferred tax liability	0	0
8. Borrowed money \$15,000,000 and interest thereon \$625	15,000,625	0
9. Unearned premiums (after deducting unearned premiums for ceded reinsurance of \$116,431,318 and including warranty reserves of \$0 and accrued accident and health experience rating refunds including \$0 for medical loss ratio rebate per the Public Health Service Act)	58,288,131	69,947,255
10. Advance premium	295,189	239,228
11. Dividends declared and unpaid:		
11.1 Stockholders	0	0
11.2 Policyholders	0	0
12. Ceded reinsurance premiums payable (net of ceding commissions)	12,123,454	16,206,227
13. Funds held by company under reinsurance treaties	0	0
14. Amounts withheld or retained by company for account of others	0	0
15. Remittances and items not allocated	702,234	2,839,205
16. Provision for reinsurance (including \$0 certified)	0	0
17. Net adjustments in assets and liabilities due to foreign exchange rates	0	0
18. Drafts outstanding	0	0
19. Payable to parent, subsidiaries and affiliates	8,532,886	6,833,993
20. Derivatives	0	0
21. Payable for securities	15,100,000	0
22. Payable for securities lending	0	0
23. Liability for amounts held under uninsured plans	0	0
24. Capital notes \$0 and interest thereon \$0	0	0
25. Aggregate write-ins for liabilities	1,508,991,241	1,437,133,256
26. Total liabilities excluding protected cell liabilities (Lines 1 through 25)	1,870,085,528	1,766,696,642
27. Protected cell liabilities	0	0
28. Total liabilities (Lines 26 and 27)	1,870,085,528	1,766,696,642
29. Aggregate write-ins for special surplus funds	0	0
30. Common capital stock	5,997,300	5,997,300
31. Preferred capital stock	0	0
32. Aggregate write-ins for other than special surplus funds	0	0
33. Surplus notes	0	0
34. Gross paid in and contributed surplus	39,781,388	39,781,388
35. Unassigned funds (surplus)	160,035,911	135,608,579
36. Less treasury stock, at cost:		
36.10 shares common (value included in Line 30 \$0)	0	0
36.20 shares preferred (value included in Line 31 \$0)	0	0
37. Surplus as regards policyholders (Lines 29 to 35, less 36)	205,814,599	181,387,267
38. Totals (Page 2, Line 28, Col. 3)	2,075,900,127	1,948,083,909
DETAILS OF WRITE-INS		
2501. Contingency reserve	1,489,614,954	1,419,894,153
2502. Deferred ceded commission expense	15,932,029	15,152,908
2503. Premium refund reserve	3,444,258	2,086,195
2598. Summary of remaining write-ins for Line 25 from overflow page	0	0
2599. Totals (Lines 2501 through 2503 plus 2598)(Line 25 above)	1,508,991,241	1,437,133,256
2901.		
2902.		
2903.		
2998. Summary of remaining write-ins for Line 29 from overflow page	0	0
2999. Totals (Lines 2901 through 2903 plus 2998)(Line 29 above)	0	0
3201.		
3202.		
3203.		
3298. Summary of remaining write-ins for Line 32 from overflow page	0	0
3299. Totals (Lines 3201 through 3203 plus 3298)(Line 32 above)	0	0

STATEMENT OF INCOME

	1	2	3
	Current	Prior Year	Prior Year Ended
	Year to Date	to Date	December 31
UNDERWRITING INCOME			
1. Premiums earned:			
1.1 Direct (written \$117,802,025)	168,819,905	274,839,095	510,306,796
1.2 Assumed (written \$181,477,400)	178,233,695	187,820,083	366,644,718
1.3 Ceded (written \$171,496,948)	207,611,999	286,475,360	538,403,693
1.4 Net (written \$127,782,477)	139,441,601	176,183,818	338,547,821
DEDUCTIONS:			
2. Losses incurred (current accident year \$28,250,656):			
2.1 Direct	30,921,735	123,056,817	189,081,087
2.2 Assumed	18,625,849	65,988,312	139,099,668
2.3 Ceded	26,081,943	108,579,168	189,417,033
2.4 Net	23,465,641	80,465,961	138,763,722
3. Loss adjustment expenses incurred	636,366	2,597,859	4,201,831
4. Other underwriting expenses incurred	25,293,649	25,922,632	45,951,928
5. Aggregate write-ins for underwriting deductions	0	0	0
6. Total underwriting deductions (Lines 2 through 5)	49,395,656	108,986,452	188,917,481
7. Net income of protected cells	0	0	0
8. Net underwriting gain or (loss) (Line 1 minus Line 6 + Line 7)	90,045,945	67,197,366	149,630,340
INVESTMENT INCOME			
9. Net investment income earned	17,507,883	20,071,641	37,279,484
10. Net realized capital gains (losses) less capital gains tax of \$2,724,864	9,964,460	25,582,563	40,004,113
11. Net investment gain (loss) (Lines 9 + 10)	27,472,343	45,654,204	77,283,597
OTHER INCOME			
12. Net gain or (loss) from agents' or premium balances charged off (amount recovered \$0 amount charged off \$0)	0	0	0
13. Finance and service charges not included in premiums	0	0	0
14. Aggregate write-ins for miscellaneous income	0	15,500	15,500
15. Total other income (Lines 12 through 14)	0	15,500	15,500
16. Net income before dividends to policyholders, after capital gains tax and before all other federal and foreign income taxes (Lines 8 + 11 + 15)	117,518,288	112,867,070	226,929,437
17. Dividends to policyholders	0	0	0
18. Net income, after dividends to policyholders, after capital gains tax and before all other federal and foreign income taxes (Line 16 minus Line 17)	117,518,288	112,867,070	226,929,437
19. Federal and foreign income taxes incurred	27,047,646	69,400,092	88,128,452
20. Net income (Line 18 minus Line 19)(to Line 22)	90,470,642	43,466,978	138,800,985
CAPITAL AND SURPLUS ACCOUNT			
21. Surplus as regards policyholders, December 31 prior year	181,387,267	184,787,640	184,787,640
22. Net income (from Line 20)	90,470,642	43,466,978	138,800,985
23. Net transfers (to) from Protected Cell accounts	0	0	0
24. Change in net unrealized capital gains (losses) less capital gains tax of \$(6,287)	(23,654)	292,355	642,129
25. Change in net unrealized foreign exchange capital gain (loss)	0	0	0
26. Change in net deferred income tax	18,924,235	65,811,158	77,911,124
27. Change in nonadmitted assets	(15,223,090)	(60,755,595)	(75,954,516)
28. Change in provision for reinsurance	0	0	0
29. Change in surplus notes	0	0	0
30. Surplus (contributed to) withdrawn from protected cells	0	0	0
31. Cumulative effect of changes in accounting principles	0	0	0
32. Capital changes:			
32.1 Paid in	0	0	0
32.2 Transferred from surplus (Stock Dividend)	0	0	0
32.3 Transferred to surplus	0	0	0
33. Surplus adjustments:			
33.1 Paid in	0	0	0
33.2 Transferred to capital (Stock Dividend)	0	0	0
33.3 Transferred from capital	0	0	0
34. Net remittances from or (to) Home Office	0	0	0
35. Dividends to stockholders	0	0	0
36. Change in treasury stock	0	0	0
37. Aggregate write-ins for gains and losses in surplus	(69,720,801)	(72,042,296)	(144,800,095)
38. Change in surplus as regards policyholders (Lines 22 through 37)	24,427,332	(23,227,400)	(3,400,373)
39. Surplus as regards policyholders, as of statement date (Lines 21 plus 38)	205,814,599	161,560,240	181,387,267
DETAILS OF WRITE-INS			
0501.			
0502.			
0503.			
0598. Summary of remaining write-ins for Line 5 from overflow page	0	0	0
0599. Totals (Lines 0501 through 0503 plus 0598)(Line 5 above)	0	0	0
1401. New Jersey BEIP Credit	0	15,500	15,500
1402.			
1403.			
1498. Summary of remaining write-ins for Line 14 from overflow page	0	0	0
1499. Totals (Lines 1401 through 1403 plus 1498)(Line 14 above)	0	15,500	15,500
3701. Addition to the contingency reserve	(69,720,801)	(88,091,909)	(169,273,911)
3702. Release of the contingency reserve due to excess losses	0	16,049,613	24,473,816
3703.			
3798. Summary of remaining write-ins for Line 37 from overflow page	0	0	0
3799. Totals (Lines 3701 through 3703 plus 3798)(Line 37 above)	(69,720,801)	(72,042,296)	(144,800,095)

STATEMENT AS OF JUNE 30, 2021 OF THE UNITED GUARANTY RESIDENTIAL INSURANCE COMPANY

CASH FLOW

	1 Current Year To Date	2 Prior Year To Date	3 Prior Year Ended December 31
Cash from Operations			
1. Premiums collected net of reinsurance	124,052,399	145,273,886	268,472,172
2. Net investment income	18,244,677	23,101,764	41,690,516
3. Miscellaneous income	0	15,500	15,500
4. Total (Lines 1 to 3)	142,297,076	168,391,150	310,178,188
5. Benefit and loss related payments	3,424,915	10,229,523	17,261,813
6. Net transfers to Separate Accounts, Segregated Accounts and Protected Cell Accounts	0	0	0
7. Commissions, expenses paid and aggregate write-ins for deductions	25,737,246	28,917,528	51,480,653
8. Dividends paid to policyholders	0	0	0
9. Federal and foreign income taxes paid (recovered) net of \$0 tax on capital gains (losses)	31,910,999	0	95,623,487
10. Total (Lines 5 through 9)	61,073,160	39,147,051	164,365,953
11. Net cash from operations (Line 4 minus Line 10)	81,223,916	129,244,099	145,812,235
Cash from Investments			
12. Proceeds from investments sold, matured or repaid:			
12.1 Bonds	1,052,653,188	1,268,645,234	2,095,246,734
12.2 Stocks	0	0	0
12.3 Mortgage loans	0	0	0
12.4 Real estate	0	2,157,512	2,157,512
12.5 Other invested assets	0	0	0
12.6 Net gains or (losses) on cash, cash equivalents and short-term investments	0	0	0
12.7 Miscellaneous proceeds	15,162,260	663	0
12.8 Total investment proceeds (Lines 12.1 to 12.7)	1,067,815,448	1,270,803,409	2,097,404,246
13. Cost of investments acquired (long-term only):			
13.1 Bonds	1,079,092,288	1,294,331,880	2,253,779,241
13.2 Stocks	1,536,600	0	0
13.3 Mortgage loans	0	0	0
13.4 Real estate	0	296,211	296,211
13.5 Other invested assets	0	0	0
13.6 Miscellaneous applications	0	0	61,597
13.7 Total investments acquired (Lines 13.1 to 13.6)	1,080,628,888	1,294,628,091	2,254,137,049
14. Net increase (or decrease) in contract loans and premium notes	0	0	0
15. Net cash from investments (Line 12.8 minus Line 13.7 and Line 14)	(12,813,440)	(23,824,682)	(156,732,803)
Cash from Financing and Miscellaneous Sources			
16. Cash provided (applied):			
16.1 Surplus notes, capital notes	0	0	0
16.2 Capital and paid in surplus, less treasury stock	0	0	0
16.3 Borrowed funds	15,000,625	0	0
16.4 Net deposits on deposit-type contracts and other insurance liabilities	0	0	0
16.5 Dividends to stockholders	0	0	0
16.6 Other cash provided (applied)	4,376,368	5,288,166	5,610,410
17. Net cash from financing and miscellaneous sources (Line 16.1 through Line 16.4 minus Line 16.5 plus Line 16.6)	19,376,993	5,288,166	5,610,410
RECONCILIATION OF CASH, CASH EQUIVALENTS AND SHORT-TERM INVESTMENTS			
18. Net change in cash, cash equivalents and short-term investments (Line 11, plus Lines 15 and 17)	87,787,468	110,707,583	(5,310,158)
19. Cash, cash equivalents and short-term investments:			
19.1 Beginning of year	37,614,829	42,924,988	42,924,987
19.2 End of period (Line 18 plus Line 19.1)	125,402,297	153,632,571	37,614,829

Note: Supplemental disclosures of cash flow information for non-cash transactions:

20.0001. Change in contingency reserve	(69,720,801)	(72,012,296)	(144,800,094)
20.0002. Change in premium refund reserve	(1,358,063)	(164,381)	(1,298,868)
20.0003. Change in deferred ceding commission	(779,121)	2,479,514	4,503,111
20.0004. Change in escheatable and stale checks	(118,345)	(38,891)	(76,613)

NOTES TO FINANCIAL STATEMENTS

NOTE 1 Summary of Significant Accounting Policies and Going Concern

A. Accounting Practices
The accompanying financial statements of United Guaranty Residential Insurance Company (the "Company") are presented on the basis of accounting practices prescribed or permitted by the North Carolina Department of Insurance (the "Department").

The Department recognizes only statutory accounting practices prescribed or permitted by the state of North Carolina (the "State") for determining and reporting the financial condition and results of operations of an insurance company and for determining its solvency under the North Carolina insurance law. The National Association of Insurance Commissioners' (NAIC) Accounting Practices and Procedures manual (NAIC SAP) has been adopted as a component of prescribed or permitted practices by the State.

There are no changes in surplus in the accompanying financial statements due to differences between the state of North Carolina prescribed accounting practices and those of the NAIC. Reconciliations of net income and policyholder's surplus between the amounts reported in the accompanying financial statements (NC Basis) and NAIC SAP follow:

	SSAP #	F/S Page	F/S Line #	2021	2020
NET INCOME					
(1) State basis (Page 4, Line 20, Columns 1 & 3)	XXX	XXX	XXX	\$ 90,470,642	\$ 138,800,985
(2) State Prescribed Practices that are an increase/(decrease) from NAIC SAP:					
(3) State Permitted Practices that are an increase/(decrease) from NAIC SAP:					
(4) NAIC SAP (1-2-3=4)	XXX	XXX	XXX	\$ 90,470,642	\$ 138,800,985
SURPLUS					
(5) State basis (Page 3, Line 37, Columns 1 & 2)	XXX	XXX	XXX	\$ 205,814,599	\$ 181,387,267
(6) State Prescribed Practices that are an increase/(decrease) from NAIC SAP:					
(7) State Permitted Practices that are an increase/(decrease) from NAIC SAP:					
(8) NAIC SAP (5-6-7=8)	XXX	XXX	XXX	\$ 205,814,599	\$ 181,387,267

C. Accounting Policy
(2) Basis for Bonds, Mandatory Convertible Securities, SVO-Identified Investments and Amortization Method
Bonds, loan backed and structured securities ("LBaSS") with an NAIC designation (as obtained from the NAIC Investment Analysis Office ("IAO")) of "1" or "2" (considered to be investment grade) are carried at amortized cost. Bonds and LBaSS with an NAIC designation of "3", "4", "5","5GI", "6" or "6*" (considered to be non-investment grade) are carried at the lower of amortized cost or fair value. LBaSS fair values are determined using independent pricing services and broker quotes. Bond and LBaSS securities are assigned a 5* designation when the following conditions are met: a) the documentation required for a full credit analysis did not exist, b) the issuer/obligor has made all contracted interest and principal payments, and c) an expectation of repayment of interest and principal exists. Bonds and LBaSS that have not been filed and have not received a designation in over a year, from the NAIC IAO, are assigned a 6* designation and carried at zero, with unrealized losses charged to surplus. Bond and LBaSS securities that have been filed and received a 6* designation can carry a value greater than zero. Amortization of premium or discount on bonds and LBaSS is calculated using the effective yield method.

Additionally, mortgage-backed securities and asset backed securities prepayment assumptions were obtained from an outside vendor or internal estimates. The retrospective adjustment method is used to account for the effect of unscheduled payments affecting high credit quality securities, while securities with less than high credit quality and securities for which the collection of all contractual cash flows is not probable are both accounted for using the prospective adjustment method.

(6) Basis for Loan-Backed Securities and Adjustment Methodology
Refer to Note 1.C. (2) above

D. Going Concern
Based upon its evaluation of relevant conditions and events, management does not have substantial doubt about the Company's ability to continue as a going concern.

NOTE 2 Accounting Changes and Corrections of Errors
Not Applicable

NOTE 3 Business Combinations and Goodwill

- A. Statutory Purchase Method
Not Applicable
- B. Statutory Merger
Not Applicable
- C. Impairment Loss
Not Applicable

NOTE 4 Discontinued Operations
Not Applicable

NOTE 5 Investments

- D. Loan-Backed Securities
 - (1) Description of Sources Used To Determine Prepayment Sources
Prepayment assumptions for single class, multi-class mortgage-back and asset-backed securities are obtained from independent third party services or internal estimates. These assumptions are consistent with the current interest rate and economic environment.
 - (2) Securities With Recognized Other-Than-Temporary-Impairment
Not Applicable
 - (3) Recognized OTTI
Not Applicable

NOTES TO FINANCIAL STATEMENTS

(4) All impaired securities (fair value is less than cost or amortized cost) for which an other-than-temporary impairment has not been recognized in earnings as a realized loss (including securities with a recognized other-than-temporary impairment for non-interest related declines when a non-recognized interest related impairment remains):

a) The aggregate amount of unrealized losses:		
1. Less than 12 Months	\$	829,245
2. 12 Months or Longer	\$	428,437
b)The aggregate related fair value of securities with unrealized losses:		
1. Less than 12 Months	\$	157,001,383
2. 12 Months or Longer	\$	31,733,868

(5) Information Investor Considered In Conclusion That Impairments Are Not Other-Than-Temporary
In accordance with SSAP No. 43R, Loan-backed and Structured Securities – Revised, the Company's loan-backed securities are stated at amortized cost. When evaluating whether a decline in value is other-than-temporary, the Company considers several factors, including, but not limited to, the following: The extent and the duration of the decline in value; The reasons for the decline in value (credit event, interest related or market fluctuations); The financial position and access to capital of the issuer, including the current and future impact of any specific events; Our intent to sell the securities, or whether it is more likely than not that we will be required to sell it before recovery; and the financial condition and near term prospects of the issuer. Impairment due to deterioration in credit that results in a conclusion that the present value of cash flows expected to be collected will not be sufficient to recover the amortized cost basis of the securities is considered other-than-temporary. Other declines in fair value (for example, due to interest rate changes, sector credit rating changes or company-specific rating changes) that result in a conclusion that the present value of cash flows expected to be collected will not be sufficient to recover the amortized cost basis of the security may also result in a conclusion that an OTTI has occurred. To the extent that the Company determines that a security is other-than-temporarily impaired, an impairment loss is recognized in the Statement of Income.

- E. Dollar Repurchase Agreements and/or Securities Lending Transactions
Not Applicable
- F. Repurchase Agreements Transactions Accounted for as Secured Borrowing
Not Applicable
- G. Reverse Repurchase Agreements Transactions Accounted for as Secured Borrowing
Not Applicable
- H. Repurchase Agreements Transactions Accounted for as a Sale
Not Applicable
- I. Reverse Repurchase Agreements Transactions Accounted for as a Sale
Not Applicable

L. Restricted Assets

1. Restricted Assets (Including Pledged)

Restricted Asset Category	Gross (Admitted & Nonadmitted) Restricted						
	Current Year					6	7
	1	2	3	4	5		
	Total General Account (G/A)	G/A Supporting Protected Cell Account Activity (a)	Total Protected Cell Account Restricted Assets	Protected Cell Account Assets Supporting G/A Activity (b)	Total (1 plus 3)	Total From Prior Year	Increase/ (Decrease) (5 minus 6)
a. Subject to contractual obligation for which liability is not shown	\$ -	\$ -	\$ -	\$ -	\$ -	\$ -	\$ -
b. Collateral held under security lending agreements	\$ -	\$ -	\$ -	\$ -	\$ -	\$ -	\$ -
c. Subject to repurchase agreements	\$ -	\$ -	\$ -	\$ -	\$ -	\$ -	\$ -
d. Subject to reverse repurchase agreements	\$ -	\$ -	\$ -	\$ -	\$ -	\$ -	\$ -
e. Subject to dollar repurchase agreements	\$ -	\$ -	\$ -	\$ -	\$ -	\$ -	\$ -
f. Subject to dollar reverse repurchase agreements	\$ -	\$ -	\$ -	\$ -	\$ -	\$ -	\$ -
g. Placed under option contracts	\$ -	\$ -	\$ -	\$ -	\$ -	\$ -	\$ -
h. Letter stock or securities restricted as to sale - excluding FHLB capital stock	\$ -	\$ -	\$ -	\$ -	\$ -	\$ -	\$ -
i. FHLB capital stock	\$ 1,536,600	\$ -	\$ -	\$ -	\$ 1,536,600	\$ -	\$ 1,536,600
j. On deposit with states	\$ 4,488,332	\$ -	\$ -	\$ -	\$ 4,488,332	\$ -	\$ 4,488,332
k. On deposit with other regulatory bodies	\$ -	\$ -	\$ -	\$ -	\$ -	\$ -	\$ -
l. Pledged collateral to FHLB (including assets backing funding agreements)	\$17,169,086	\$ -	\$ -	\$ -	\$17,169,086	\$ -	\$17,169,086
m. Pledged as collateral not captured in other categories	\$ -	\$ -	\$ -	\$ -	\$ -	\$ -	\$ -
n. Other restricted assets	\$ -	\$ -	\$ -	\$ -	\$ -	\$ -	\$ -
o. Total Restricted Assets	\$23,194,018	\$ -	\$ -	\$ -	\$23,194,018	\$ -	\$23,194,018

(a) Subset of Column 1

(b) Subset of Column 3

NOTES TO FINANCIAL STATEMENTS

Restricted Asset Category	Current Year			
	8	9	Percentage	
			10	11
	Total Non-admitted Restricted	Total Admitted Restricted (5 minus 8)	Gross (Admitted & Non-admitted) Restricted to Total Assets (c)	Admitted Restricted to Total Admitted Assets (d)
a. Subject to contractual obligation for which liability is not shown	\$ -	\$ -	0.000%	0.000%
b. Collateral held under security lending agreements	\$ -	\$ -	0.000%	0.000%
c. Subject to repurchase agreements	\$ -	\$ -	0.000%	0.000%
d. Subject to reverse repurchase agreements	\$ -	\$ -	0.000%	0.000%
e. Subject to dollar repurchase agreements	\$ -	\$ -	0.000%	0.000%
f. Subject to dollar reverse repurchase agreements	\$ -	\$ -	0.000%	0.000%
g. Placed under option contracts	\$ -	\$ -	0.000%	0.000%
h. Letter stock or securities restricted as to sale - excluding FHLB capital stock	\$ -	\$ -	0.000%	0.000%
i. FHLB capital stock	\$ -	\$ 1,536,600	0.063%	0.074%
j. On deposit with states	\$ -	\$ 4,488,332	0.185%	0.216%
k. On deposit with other regulatory bodies	\$ -	\$ -	0.000%	0.000%
l. Pledged collateral to FHLB (including assets backing funding agreements)	\$ -	\$17,169,086	0.707%	0.827%
m. Pledged as collateral not captured in other categories	\$ -	\$ -	0.000%	0.000%
n. Other restricted assets	\$ -	\$ -	0.000%	0.000%
o. Total Restricted Assets	\$ -	\$23,194,018	0.955%	1.117%

(c) Column 5 divided by Asset Page, Column 1, Line 28
(d) Column 9 divided by Asset Page, Column 3, Line 28

- M. Working Capital Finance Investments

2. Aggregate Maturity Distribution on the Underlying Working Capital Finance Programs
Not Applicable

3. Any Events of Default or Working Capital Finance Investments
Not Applicable
- N. Offsetting and Netting of Assets and Liabilities
Not Applicable
- R. Reporting Entity's Share of Cash Pool by Asset Type
Not Applicable

NOTE 6 Joint Ventures, Partnerships and Limited Liability Companies
Not Applicable

NOTE 7 Investment Income
No significant changes

NOTE 8 Derivative Instruments
Not Applicable

NOTE 9 Income Taxes
No significant changes

NOTE 10 Information Concerning Parent, Subsidiaries, Affiliates and Other Related Parties

- B. Transactions

On May 17, 2021, the Department approved the Company's request to enter into an Intercompany Loan Agreement with Arch Capital Group (U.S.) Inc. ("ACGUS"). Under the terms of the agreement, the Company would loan ACGUS up to \$200 million, subject to certain limitations. In conjunction with the Intercompany Loan Agreement, the Company would enter into a Guaranty Agreement with Arch Capital Group Ltd ("ACGT"), whereby ACGT would guaranty the principal and interest payments required under the Intercompany Loan Agreement.

On June 23, 2021, the Company loaned ACGUS \$15,000,0000 per the Intercompany Loan Agreement, defined above, to mature on September 23, 2021.
- D. Amounts Due From or To Related Parties

At June 30, 2021 the Company reported a receivable of \$5,095,703 and a payable of (\$8,285,886) from/to affiliated companies. Details of the balances are:
Arch U.S. MI Services, Inc. \$4,661,512; Arch Mortgage Assurance Company \$434,191; Arch Mortgage Insurance Company (\$8,285,832); United Guaranty Residential Insurance Company of North Carolina (\$163,110); Arch U.S. MI Holdins, Inc. (\$52,513); United Guaranty Services, Inc. (\$29,992); Arch Mortgage Guaranty Company (\$1,439)

At December 31, 2020, the Company reported a receivable of \$7,220,263 and a payable of (\$6,833,993) from/to affiliated companies. Details of the balances are:
Arch U.S. MI Services, Inc. \$6,867,705; United Guaranty Residential Insurance Company of North Carolina \$351,845, Arch Mortgage Assurance Company, \$713; ; Arch Mortgage Insurance Company (\$6,717,861); Arch U.S. MI Holdings, Inc. (\$82,382); United Guaranty Services, Inc. (\$30,059); Arch Mortgage Guaranty Company (\$3,691)

Intercompany balances are settled monthly.

NOTES TO FINANCIAL STATEMENTS

NOTE 11 Debt

B. FHLB (Federal Home Loan Bank) Agreements

(1) Description of Agreement/Borrowing

On December 30, 2020, the Company became a member of the FHLB and intends to obtain secured advances to provide low cost, supplemental liquidity. As of June 30, 2021, the Company has determined its estimated maximum borrowing capacity to be \$207,590,013 which represents 10% of admitted assets.

(2) FHLB Capital Stock
a. Aggregate Totals

	1	2	3
	Total 2+3	General Account	Protected Cell Accounts
1. Current Year			
(a) Membership Stock - Class A	\$ -	\$ -	\$ -
(b) Membership Stock - Class B	\$ 974,100	\$ 974,100	\$ -
(c) Activity Stock	\$ 562,500	\$ 562,500	\$ -
(d) Excess Stock	\$ -	\$ -	\$ -
(e) Aggregate Total (a+b+c+d)	\$ 1,536,600	\$ 1,536,600	\$ -
(f) Actual or estimated Borrowing Capacity as Determined by the Insurer	\$ 207,590,013	XXX	XXX
2. Prior Year-end			
(a) Membership Stock - Class A	\$ -	\$ -	\$ -
(b) Membership Stock - Class B	\$ -	\$ -	\$ -
(c) Activity Stock	\$ -	\$ -	\$ -
(d) Excess Stock	\$ -	\$ -	\$ -
(e) Aggregate Total (a+b+c+d)	\$ -	\$ -	\$ -
(f) Actual or estimated Borrowing Capacity as Determined by the Insurer	\$ -	XXX	XXX

11B(2)a1(f) should be equal to or greater than 11B(4)a1(d)
11B(2)a2(f) should be equal to or greater than 11B(4)a2(d)

b. Membership Stock (Class A and B) Eligible and Not Eligible for Redemption

	1	2	Eligible for Redemption			
	Current Year Total (2+3+4+5+6)	Not Eligible for Redemption	3	4	5	6
			Less Than 6 Months	6 Months to Less Than 1 Year	1 to Less Than 3 Years	3 to 5 Years
Membership Stock						
1. Class A	\$ -	\$ -	\$ -	\$ -	\$ -	\$ -
2. Class B	\$ 974,100	\$ 974,100	\$ -	\$ -	\$ -	\$ -

11B(2)b1 Current Year Total (Column 1) should equal 11B(2)a1(a) Total (Column 1)
11B(2)b2 Current Year Total (Column 1) should equal 11B(2)a1(b) Total (Column 1)

(3) Collateral Pledged to FHLB

a. Amount Pledged as of Reporting Date

	1	2	3
	Fair Value	Carrying Value	Aggregate Total Borrowing
1. Current Year Total General and Protected Cell Account Total Collateral Pledged (Lines 2+3)	\$ 17,097,875	\$ 17,169,086	\$ 15,000,000
2. Current Year General Account Total Collateral Pledged	\$ 17,097,875	\$ 17,169,086	\$ 15,000,000
3. Current Year Protected Cell Account Total Collateral Pledged	\$ -	\$ -	\$ -
4. Prior Year-end Total General and Protected Cell Account Total Collateral Pledged	\$ -	\$ -	\$ -

11B(3)a1 (Columns 1, 2 and 3) should be equal to or less than 11B(3)b1 (Columns 1, 2 and 3 respectively)
11B(3)a2 (Columns 1, 2 and 3) should be equal to or less than 11B(3)b2 (Columns 1, 2 and 3 respectively)
11B(3)a3 (Columns 1, 2 and 3) should be equal to or less than 11B(3)b3 (Columns 1, 2 and 3 respectively)
11B(3)a4 (Columns 1, 2 and 3) should be equal to or less than 11B(3)b4 (Columns 1, 2 and 3 respectively)

b. Maximum Amount Pledged During Reporting Period

	1	2	3
	Fair Value	Carrying Value	Amount Borrowed at Time of Maximum Collateral
1. Current Year Total General and Protected Cell Account Maximum Collateral Pledged (Lines 2+3)	\$ 17,097,875	\$ 17,169,086	\$ 15,000,000
2. Current Year General Account Maximum Collateral Pledged	\$ 17,097,875	\$ 17,169,086	\$ 15,000,000
3. Current Year Protected Cell Account Maximum Collateral Pledged	\$ -	\$ -	\$ -
4. Prior Year-end Total General and Protected Cell Account Maximum Collateral Pledged	\$ -	\$ -	\$ -

(4) Borrowing from FHLB

a. Amount as of Reporting Date

	1	2	3	4
	Total 2+3	General Account	Protected Cell Account	Funding Agreements Reserves Established
1. Current Year				
(a) Debt	\$ 15,000,000	\$ 15,000,000	\$ -	XXX
(b) Funding Agreements	\$ -	\$ -	\$ -	\$ -
(c) Other	\$ -	\$ -	\$ -	XXX
(d) Aggregate Total (a+b+c)	\$ 15,000,000	\$ 15,000,000	\$ -	\$ -

NOTES TO FINANCIAL STATEMENTS

2. Prior Year end							
(a) Debt	\$	-	\$	-	\$	-	XXX
(b) Funding Agreements	\$	-	\$	-	\$	-	\$ -
(c) Other	\$	-	\$	-	\$	-	XXX
(d) Aggregate Total (a+b+c)	\$	-	\$	-	\$	-	\$ -

b. Maximum Amount During Reporting Period (Current Year)

	1	2	3
	Total 2+3	General Account	Protected Cell Account
1. Debt	\$ 15,000,000	\$ 15,000,000	\$ -
2. Funding Agreements	\$ -	\$ -	\$ -
3. Other	\$ -	\$ -	\$ -
4. Aggregate Total (1+2+3)	\$ 15,000,000	\$ 15,000,000	\$ -

11B(4)b4 (Columns 1, 2 and 3) should be equal to or greater than 11B(4)a1(d) (Columns 1, 2 and 3 respectively)

c. FHLB - Prepayment Obligations

	Does the company have prepayment obligations under the following arrangements (YES/NO)?
1. Debt	No
2. Funding Agreements	
3. Other	

NOTE 12 Retirement Plans, Deferred Compensation, Postemployment Benefits and Compensated Absences and Other Postretirement Benefit Plans

- A. Defined Benefit Plan
- (4) Components of net periodic benefit cost
- Not Applicable

NOTE 13 Capital and Surplus, Dividend Restrictions and Quasi-Reorganizations

No significant changes

NOTE 14 Liabilities, Contingencies and Assessments

No significant changes

NOTE 15 Leases

No significant changes

NOTE 16 Information About Financial Instruments With Off-Balance Sheet Risk and Financial Instruments With Concentrations of Credit Risk

Not Applicable

NOTE 17 Sale, Transfer and Servicing of Financial Assets and Extinguishments of Liabilities

- B. Transfer and Servicing of Assets
- Not Applicable

- C. Wash Sales
- Not Applicable

NOTE 18 Gain or Loss to the Reporting Entity from Uninsured Plans and the Uninsured Portion of Partially Insured Plans

Not Applicable

NOTE 19 Direct Premium Written/Produced by Managing General Agents/Third Party Administrators

Not Applicable

NOTE 20 Fair Value Measurements

A. (1) Fair Value Measurements at Reporting Date

Description for each class of asset or liability	(Level 1)	(Level 2)	(Level 3)	Net Asset Value (NAV)	Total
a. Assets at fair value					
Exempt MM Mutual Fund	\$ -	\$ -	\$ -	\$ -	\$ -
Other MM Mutual Fund	\$ 41,049,313	\$ -	\$ -	\$ -	\$ 41,049,313
Indust. & Misc.	\$ 1,536,600	\$ 4,392,553	\$ -	\$ -	\$ 5,929,153
SVO Identified Funds	\$ -	\$ 41,209,173	\$ -	\$ -	\$ 41,209,173
Total assets at fair value/NAV	\$ 42,585,913	\$ 45,601,726	\$ -	\$ -	\$ 88,187,639

(2) Fair Value Measurements in (Level 3) of the Fair Value hierarchy
At June 30, 2021, the Company has no assets or liabilities measured at fair value in this category.

(3) Policies When Transfers Between Levels Are Recognized
At the end of each reporting period, the Company evaluates whether or not any event has occurred or circumstances have changed that would cause an instrument to be transferred into or out of Level 3. There were no transfers into or out of Level 3 for the quarter ended June 30, 2021.

NOTES TO FINANCIAL STATEMENTS

- (4) Description of Valuation Techniques and Inputs Used in Fair Value Measurement
- In accordance with SSAP 100R, the valuation techniques used in measuring fair values are based on the following:
- Level 1: Fair value measurements that are quoted prices (unadjusted) in active markets that the Company has the ability to access for identical assets or liabilities.
- Level 2: Fair value measurements, based on inputs other than quoted prices included in Level 1 that are observable for the asset or liability, either directly or indirectly. Level 2 inputs include quoted prices for similar assets and liabilities in active markets, and inputs other than quoted prices that are observable at commonly quoted intervals.
- Level 3: Fair value measurements based on valuation techniques that use significant inputs that are unobservable. These measurements include circumstances in which there is little, if any, market activity for the asset or liability.
- (5) Fair Value Disclosures for Derivative Assets and Liabilities
- Not Applicable

- B. Fair Value Reporting under SSAP 100 and Other Accounting Pronouncements
- Not Applicable

C. Aggregate fair value for all financial instruments and the level within the fair value hierarchy in which the fair value measurements in their entirety fall.

Type of Financial Instrument	Aggregate Fair Value	Admitted Assets	(Level 1)	(Level 2)	(Level 3)	Net Asset Value (NAV)	Not Practicable (Carrying Value)
Bonds	\$ 1,893,110,451	\$ 1,857,022,962	\$ 298,420,052	\$ 1,594,690,399	\$ -	\$ -	\$ -
Common Stock	\$ 1,536,000	\$ 1,536,000	\$ 1,536,000	\$ -	\$ -	\$ -	\$ -
Cash, cash equivalent and short-term investments	\$ 125,402,297	\$ 125,402,297	\$ 75,402,297	\$ 50,000,000	\$ -	\$ -	\$ -

- D. Not Practicable to Estimate Fair Value
- Not Applicable
- E. NAV Practical Expedient Investments
- Not Applicable

NOTE 21 Other Items

No significant changes

NOTE 22 Events Subsequent

Subsequent events have been considered through August 9, 2021 for these statutory financial statements which are to be issued on August 9, 2021.

On July 30, 2021, the Company provided notice to the Department for an ordinary dividend to be paid before September 30, 2021.

On July 30, 2021, the Company requested approval from the Department for an extraordinary dividend to be paid before September 30, 2021.

On July 30, 2021, the Company requested approval from the Department, the Wisconsin Office of the Commissioner of Insurance, Fannie Mae and Freddie Mac to enter into concurrent forward excess of loss and quota share reinsurance agreements effective July 1, 2021. The Company and Arch Mortgage Insurance Company, collectively the "Ceding Entity" on both agreements, are seeking reinsurance coverage on mortgage guaranty insurance business with separate panels of reinsurers collectively serving as the "Reinsurer" on both agreements.

NOTE 23 Reinsurance

No significant changes

NOTE 24 Retrospectively Rated Contracts & Contracts Subject to Redetermination

F. Risk Sharing Provisions of the Affordable Care Act

(1) Did the reporting entity write accident and health insurance premium which is subject to the Affordable Care Act risk sharing provisions (YES/NO)?

Yes [] No [X]

NOTE 25 Change in Incurred Losses and Loss Adjustment Expenses

A. Change in Incurred Losses and Loss Adjustment Expenses

Incurred loss and loss adjustment expenses attributable to insured events of prior years decreased by \$4.9 million and increased by \$5.5 million for the six months ended June 30, 2021 and 2020, respectively, as a result of re-estimation of unpaid losses and loss adjustment expenses. The change is generally the result of ongoing analysis of recent loss development trends. Original estimates are increased or decreased as additional information becomes known regarding individual claims.

B. Information about Significant Changes in Methodologies and Assumptions

Not Applicable

NOTE 26 Intercompany Pooling Arrangements

Not Applicable

NOTE 27 Structured Settlements

Not Applicable

NOTE 28 Health Care Receivables

Not Applicable

NOTE 29 Participating Policies

Not Applicable

NOTES TO FINANCIAL STATEMENTS

NOTE 30 Premium Deficiency Reserves
No significant changes

NOTE 31 High Deductibles
Not Applicable

NOTE 32 Discounting of Liabilities for Unpaid Losses or Unpaid Loss Adjustment Expenses
Not Applicable

NOTE 33 Asbestos/Environmental Reserves
Not Applicable

NOTE 34 Subscriber Savings Accounts
Not Applicable

NOTE 35 Multiple Peril Crop Insurance
Not Applicable

NOTE 36 Financial Guaranty Insurance
B. Schedule of insured financial obligations at the end of the period
Not Applicable

STATEMENT AS OF JUNE 30, 2021 OF THE UNITED GUARANTY RESIDENTIAL INSURANCE COMPANY

GENERAL INTERROGATORIES

PART 1 - COMMON INTERROGATORIES

GENERAL

- 1.1

Did the reporting entity experience any material transactions requiring the filing of Disclosure of Material Transactions with the State of Domicile, as required by the Model Act?

Yes [☐] No [☒]
- 1.2

If yes, has the report been filed with the domiciliary state?

Yes [☐] No [☐]
- 2.1

Has any change been made during the year of this statement in the charter, by-laws, articles of incorporation, or deed of settlement of the reporting entity?

Yes [☐] No [☒]
- 2.2

If yes, date of change:
- 3.1

Is the reporting entity a member of an Insurance Holding Company System consisting of two or more affiliated persons, one or more of which is an insurer?

If yes, complete Schedule Y, Parts 1 and 1A.

Yes [☒] No [☐]
- 3.2

Have there been any substantial changes in the organizational chart since the prior quarter end?

Yes [☒] No [☐]
- 3.3

If the response to 3.2 is yes, provide a brief description of those changes.
Companies added: Castel LTDCO 1 Limited, Castel LTDCO 2 Limited, Arch Investment ICAV and Soundview Claims Solutions Inc..
- 3.4

Is the reporting entity publicly traded or a member of a publicly traded group?

Yes [☒] No [☐]
- 3.5

If the response to 3.4 is yes, provide the CIK (Central Index Key) code issued by the SEC for the entity/group.

947484
- 4.1

Has the reporting entity been a party to a merger or consolidation during the period covered by this statement?

If yes, complete and file the merger history data file with the NAIC.

Yes [☐] No [☒]
- 4.2

If yes, provide the name of the entity, NAIC Company Code, and state of domicile (use two letter state abbreviation) for any entity that has ceased to exist as a result of the merger or consolidation.

1	2	3
Name of Entity	NAIC Company Code	State of Domicile
5.

If the reporting entity is subject to a management agreement, including third-party administrator(s), managing general agent(s), attorney-in-fact, or similar agreement, have there been any significant changes regarding the terms of the agreement or principals involved?

If yes, attach an explanation.

Yes [☐] No [☒] N/A [☐]
- 6.1

State as of what date the latest financial examination of the reporting entity was made or is being made.

12/31/2020
- 6.2

State the as of date that the latest financial examination report became available from either the state of domicile or the reporting entity. This date should be the date of the examined balance sheet and not the date the report was completed or released.

12/31/2017
- 6.3

State as of what date the latest financial examination report became available to other states or the public from either the state of domicile or the reporting entity. This is the release date or completion date of the examination report and not the date of the examination (balance sheet date).

06/22/2019
- 6.4

By what department or departments?
North Carolina Department of Insurance
- 6.5

Have all financial statement adjustments within the latest financial examination report been accounted for in a subsequent financial statement filed with Departments?

Yes [☐] No [☐] N/A [☒]
- 6.6

Have all of the recommendations within the latest financial examination report been complied with?

Yes [☐] No [☐] N/A [☒]
- 7.1

Has this reporting entity had any Certificates of Authority, licenses or registrations (including corporate registration, if applicable) suspended or revoked by any governmental entity during the reporting period?

Yes [☐] No [☒]
- 7.2

If yes, give full information:
- 8.1

Is the company a subsidiary of a bank holding company regulated by the Federal Reserve Board?

Yes [☐] No [☒]
- 8.2

If response to 8.1 is yes, please identify the name of the bank holding company.
- 8.3

Is the company affiliated with one or more banks, thrifts or securities firms?

Yes [☐] No [☒]
- 8.4

If response to 8.3 is yes, please provide below the names and location (city and state of the main office) of any affiliates regulated by a federal regulatory services agency [i.e. the Federal Reserve Board (FRB), the Office of the Comptroller of the Currency (OCC), the Federal Deposit Insurance Corporation (FDIC) and the Securities Exchange Commission (SEC)] and identify the affiliate's primary federal regulator.

1	2	3	4	5	6
Affiliate Name	Location (City, State)	FRB	OCC	FDIC	SEC

STATEMENT AS OF JUNE 30, 2021 OF THE UNITED GUARANTY RESIDENTIAL INSURANCE COMPANY

GENERAL INTERROGATORIES

- 9.1

Are the senior officers (principal executive officer, principal financial officer, principal accounting officer or controller, or persons performing similar functions) of the reporting entity subject to a code of ethics, which includes the following standards?
(a) Honest and ethical conduct, including the ethical handling of actual or apparent conflicts of interest between personal and professional relationships;
(b) Full, fair, accurate, timely and understandable disclosure in the periodic reports required to be filed by the reporting entity;
(c) Compliance with applicable governmental laws, rules and regulations;
(d) The prompt internal reporting of violations to an appropriate person or persons identified in the code; and
(e) Accountability for adherence to the code.

Yes [X] No []
- 9.11

If the response to 9.1 is No, please explain:
- 9.2

Has the code of ethics for senior managers been amended?

Yes [] No [X]
- 9.21

If the response to 9.2 is Yes, provide information related to amendment(s).
- 9.3

Have any provisions of the code of ethics been waived for any of the specified officers?

Yes [] No [X]
- 9.31

If the response to 9.3 is Yes, provide the nature of any waiver(s).

FINANCIAL

- 10.1

Does the reporting entity report any amounts due from parent, subsidiaries or affiliates on Page 2 of this statement?

Yes [X] No []
- 10.2

If yes, indicate any amounts receivable from parent included in the Page 2 amount:

\$0

INVESTMENT

- 11.1

Were any of the stocks, bonds, or other assets of the reporting entity loaned, placed under option agreement, or otherwise made available for use by another person? (Exclude securities under securities lending agreements.)

Yes [] No [X]
- 11.2

If yes, give full and complete information relating thereto:
12.

Amount of real estate and mortgages held in other invested assets in Schedule BA:

\$0
13.

Amount of real estate and mortgages held in short-term investments:

\$0
- 14.1

Does the reporting entity have any investments in parent, subsidiaries and affiliates?

Yes [] No []
- 14.2

If yes, please complete the following:
- | | 1 | 2 |
|---|---|--|
| | Prior Year-End
Book/Adjusted
Carrying Value | Current Quarter
Book/Adjusted
Carrying Value |
| 14.21 Bonds | \$0 | \$0 |
| 14.22 Preferred Stock | \$0 | \$0 |
| 14.23 Common Stock | \$0 | \$0 |
| 14.24 Short-Term Investments | \$0 | \$0 |
| 14.25 Mortgage Loans on Real Estate | \$0 | \$0 |
| 14.26 All Other | \$0 | \$0 |
| 14.27 Total Investment in Parent, Subsidiaries and Affiliates (Subtotal Lines 14.21 to 14.26) | \$0 | \$0 |
| 14.28 Total Investment in Parent included in Lines 14.21 to 14.26 above | \$0 | \$0 |
- 15.1

Has the reporting entity entered into any hedging transactions reported on Schedule DB?

Yes [] No [X]
- 15.2

If yes, has a comprehensive description of the hedging program been made available to the domiciliary state?
If no, attach a description with this statement.

Yes [] No [] N/A []
16.

For the reporting entity's security lending program, state the amount of the following as of the current statement date:
- 16.1

Total fair value of reinvested collateral assets reported on Schedule DL, Parts 1 and 2.

\$0
- 16.2

Total book adjusted/carrying value of reinvested collateral assets reported on Schedule DL, Parts 1 and 2

\$0
- 16.3

Total payable for securities lending reported on the liability page.

\$0

STATEMENT AS OF JUNE 30, 2021 OF THE UNITED GUARANTY RESIDENTIAL INSURANCE COMPANY

GENERAL INTERROGATORIES

17. Excluding items in Schedule E - Part 3 - Special Deposits, real estate, mortgage loans and investments held physically in the reporting entity's offices, vaults or safety deposit boxes, were all stocks, bonds and other securities, owned throughout the current year held pursuant to a custodial agreement with a qualified bank or trust company in accordance with Section 1, III - General Examination Considerations, F. Outsourcing of Critical Functions, Custodial or Safekeeping Agreements of the NAIC Financial Condition Examiners Handbook? Yes [X] No []
- 17.1 For all agreements that comply with the requirements of the NAIC Financial Condition Examiners Handbook, complete the following:

1 Name of Custodian(s)	2 Custodian Address
Bank of New York Mellon	One Mellon Center – Room 1072, Pittsburgh, PA 15258

- 17.2 For all agreements that do not comply with the requirements of the NAIC Financial Condition Examiners Handbook, provide the name, location and a complete explanation:

1 Name(s)	2 Location(s)	3 Complete Explanation(s)
Not Applicable

- 17.3 Have there been any changes, including name changes, in the custodian(s) identified in 17.1 during the current quarter? Yes [] No [X]
- 17.4 If yes, give full information relating thereto:

1 Old Custodian	2 New Custodian	3 Date of Change	4 Reason

- 17.5 Investment management – Identify all investment advisors, investment managers, broker/dealers, including individuals that have the authority to make investment decisions on behalf of the reporting entity. For assets that are managed internally by employees of the reporting entity, note as such. ["...that have access to the investment accounts"; "...handle securities"]

1 Name of Firm or Individual	2 Affiliation
Arch Investment Management, LLC	A.....
.....

17.5097 For those firms/individuals listed in the table for Question 17.5, do any firms/individuals unaffiliated with the reporting entity (i.e. designated with a "U") manage more than 10% of the reporting entity's invested assets?..... Yes [] No [X]

17.5098 For firms/individuals unaffiliated with the reporting entity (i.e. designated with a "U") listed in the table for Question 17.5, does the total assets under management aggregate to more than 50% of the reporting entity's invested assets?..... Yes [] No [X]

- 17.6 For those firms or individuals listed in the table for 17.5 with an affiliation code of "A" (affiliated) or "U" (unaffiliated), provide the information for the table below.

1	2	3	4	5 Investment Management Agreement (IMA) Filed
Central Registration Depository Number	Name of Firm or Individual	Legal Entity Identifier (LEI)	Registered With	
1299060	Arch Investment Management, LLC	SEC	DS.....
.....

- 18.1 Have all the filing requirements of the Purposes and Procedures Manual of the NAIC Investment Analysis Office been followed? Yes [X] No []
- 18.2 If no, list exceptions:

19. By self-designating 5GI securities, the reporting entity is certifying the following elements for each self-designated 5GI security:
- a. Documentation necessary to permit a full credit analysis of the security does not exist or an NAIC CRP credit rating for an FE or PL security is not available.
 - b. Issuer or obligor is current on all contracted interest and principal payments.
 - c. The insurer has an actual expectation of ultimate payment of all contracted interest and principal.
- Has the reporting entity self-designated 5GI securities? Yes [] No [X]

20. By self-designating PLGI securities, the reporting entity is certifying the following elements of each self-designated PLGI security:
- a. The security was purchased prior to January 1, 2018.
 - b. The reporting entity is holding capital commensurate with the NAIC Designation reported for the security.
 - c. The NAIC Designation was derived from the credit rating assigned by an NAIC CRP in its legal capacity as a NRSRO which is shown on a current private letter rating held by the insurer and available for examination by state insurance regulators.
 - d. The reporting entity is not permitted to share this credit rating of the PL security with the SVO.
- Has the reporting entity self-designated PLGI securities? Yes [] No [X]

21. By assigning FE to a Schedule BA non-registered private fund, the reporting entity is certifying the following elements of each self-designated FE fund:
- a. The shares were purchased prior to January 1, 2019.
 - b. The reporting entity is holding capital commensurate with the NAIC Designation reported for the security.
 - c. The security had a public credit rating(s) with annual surveillance assigned by an NAIC CRP in its legal capacity as an NRSRO prior to January 1, 2019.
 - d. The fund only or predominantly holds bonds in its portfolio.
 - e. The current reported NAIC Designation was derived from the public credit rating(s) with annual surveillance assigned by an NAIC CRP in its legal capacity as an NRSRO.
 - f. The public credit rating(s) with annual surveillance assigned by an NAIC CRP has not lapsed.
- Has the reporting entity assigned FE to Schedule BA non-registered private funds that complied with the above criteria? Yes [] No [X]

GENERAL INTERROGATORIES

PART 2 - PROPERTY & CASUALTY INTERROGATORIES

1.

If the reporting entity is a member of a pooling arrangement, did the agreement or the reporting entity's participation change?
If yes, attach an explanation.

Yes [] No [] N/A [X]
2.

Has the reporting entity reinsured any risk with any other reporting entity and agreed to release such entity from liability, in whole or in part, from any loss that may occur on the risk, or portion thereof, reinsured?
If yes, attach an explanation.

Yes [] No [X]
- 3.1

Have any of the reporting entity's primary reinsurance contracts been canceled?

Yes [] No [X]
- 3.2

If yes, give full and complete information thereto.
- 4.1

Are any of the liabilities for unpaid losses and loss adjustment expenses other than certain workers' compensation tabular reserves (see Annual Statement Instructions pertaining to disclosure of discounting for definition of " tabular reserves") discounted at a rate of interest greater than zero?

Yes [] No [X]
- 4.2

If yes, complete the following schedule:

			TOTAL DISCOUNT				DISCOUNT TAKEN DURING PERIOD			
1	2	3	4	5	6	7	8	9	10	11
Line of Business	Maximum Interest	Discount Rate	Unpaid Losses	Unpaid LAE	IBNR	TOTAL	Unpaid Losses	Unpaid LAE	IBNR	TOTAL
TOTAL			0	0	0	0	0	0	0	0

5.

Operating Percentages:
- 5.1

A&H loss percent

0.000 %
- 5.2

A&H cost containment percent

0.000 %
- 5.3

A&H expense percent excluding cost containment expenses

0.000 %
- 6.1

Do you act as a custodian for health savings accounts?

Yes [] No [X]
- 6.2

If yes, please provide the amount of custodial funds held as of the reporting date\$.....

0
- 6.3

Do you act as an administrator for health savings accounts?

Yes [] No [X]
- 6.4

If yes, please provide the balance of the funds administered as of the reporting date\$.....

0
7.

Is the reporting entity licensed or chartered, registered, qualified, eligible or writing business in at least two states?

Yes [X] No []
- 7.1

If no, does the reporting entity assume reinsurance business that covers risks residing in at least one state other than the state of domicile of the reporting entity?

Yes [] No []

STATEMENT AS OF JUNE 30, 2021 OF THE UNITED GUARANTY RESIDENTIAL INSURANCE COMPANY

SCHEDULE F - CEDED REINSURANCE

Showing All New Reinsurers - Current Year to Date

[illegible]

SCHEDULE T - EXHIBIT OF PREMIUMS WRITTEN

Current Year to Date - Allocated by States and Territories

			1 Active Status (a)	Direct Premiums Written		Direct Losses Paid (Deducting Salvage)		Direct Losses Unpaid	
				2 Current Year To Date	3 Prior Year To Date	4 Current Year To Date	5 Prior Year To Date	6 Current Year To Date	7 Prior Year To Date
States, etc.			(a)						
1.	Alabama	AL	L	1,682,487	2,811,534	175,920	677,396	5,492,529	3,114,763
2.	Alaska	AK	L	383,940	584,498	(2,919)	124,828	542,296	1,070,699
3.	Arizona	AZ	L	1,919,345	3,629,555	(7,532)	246,639	3,471,181	3,645,592
4.	Arkansas	AR	L	840,681	1,451,094	122,085	193,356	1,843,721	1,786,762
5.	California	CA	L	4,341,820	8,038,536	(23,777)	592,204	14,167,814	17,276,167
6.	Colorado	CO	L	1,807,569	4,017,885	(12,780)	113,437	4,257,770	3,605,353
7.	Connecticut	CT	L	1,858,139	2,893,858	537,626	1,103,159	6,201,525	5,646,882
8.	Delaware	DE	L	493,307	730,730	260,586	228,852	1,739,861	1,517,895
9.	District of Columbia	DC	L	208,366	336,483	(109,129)	135,006	1,290,998	968,011
10.	Florida	FL	L	6,621,334	9,770,582	928,376	4,061,927	22,068,132	18,822,020
11.	Georgia	GA	L	4,375,267	7,069,003	164,050	941,952	12,969,491	9,126,766
12.	Hawaii	HI	L	471,153	788,072	74,252	253,408	2,092,679	1,912,816
13.	Idaho	ID	L	369,181	711,864	(1,795)	120,782	249,633	236,209
14.	Illinois	IL	L	5,967,275	8,921,981	828,959	3,550,029	19,674,955	14,554,378
15.	Indiana	IN	L	3,417,657	5,918,663	238,925	519,359	6,390,447	3,712,548
16.	Iowa	IA	L	2,160,057	3,422,106	114,639	442,231	2,862,883	1,913,446
17.	Kansas	KS	L	1,348,429	2,312,690	24,211	793,727	2,817,098	1,977,869
18.	Kentucky	KY	L	1,102,702	1,846,510	26,435	75,316	2,114,583	1,491,774
19.	Louisiana	LA	L	1,519,546	2,430,182	206,659	619,654	5,777,007	3,929,070
20.	Maine	ME	L	448,414	789,549	11,518	13,648	1,303,273	1,225,274
21.	Maryland	MD	L	3,044,914	4,889,046	536,375	2,889,364	14,448,186	11,000,541
22.	Massachusetts	MA	L	2,278,902	4,093,043	416,804	1,338,310	8,311,562	6,743,519
23.	Michigan	MI	L	3,473,162	5,744,141	(69,392)	971,405	8,761,556	8,049,756
24.	Minnesota	MN	L	6,660,430	10,745,116	514,536	1,640,692	26,566,881	27,236,174
25.	Mississippi	MS	L	593,138	927,307	224,668	329,200	1,652,856	1,060,767
26.	Missouri	MO	L	2,158,101	3,776,465	305,505	690,310	5,193,872	3,539,382
27.	Montana	MT	L	329,764	585,185	0	0	394,480	418,264
28.	Nebraska	NE	L	1,339,747	2,417,153	(819)	33,428	2,068,733	1,371,493
29.	Nevada	NV	L	768,035	1,330,989	155,189	308,616	3,350,161	3,652,630
30.	New Hampshire	NH	L	583,624	1,102,981	93,653	120,695	1,787,737	1,928,437
31.	New Jersey	NJ	L	5,956,793	8,305,423	908,358	3,220,408	30,196,368	21,387,062
32.	New Mexico	NM	L	491,674	762,327	103,520	241,440	1,429,468	997,033
33.	New York	NY	L	4,832,504	6,977,053	944,612	2,403,483	27,145,662	19,348,361
34.	North Carolina	NC	L	5,545,878	8,648,596	646,566	1,604,590	17,161,855	12,278,907
35.	North Dakota	ND	L	356,745	616,086	47,360	130,790	603,883	594,781
36.	Ohio	OH	L	3,780,078	5,598,858	191,765	828,114	7,982,106	6,591,717
37.	Oklahoma	OK	L	1,295,477	2,135,680	172,322	263,787	4,192,169	2,587,260
38.	Oregon	OR	L	1,288,516	2,511,062	108,722	260,056	3,063,882	2,002,317
39.	Pennsylvania	PA	L	3,887,109	6,129,814	554,443	1,860,826	12,663,113	9,257,812
40.	Rhode Island	RI	L	200,779	346,198	18,225	179,223	833,517	544,131
41.	South Carolina	SC	L	2,473,479	4,148,897	66,026	892,998	5,556,489	4,219,586
42.	South Dakota	SD	L	228,735	472,891	6,417	40,169	357,973	215,145
43.	Tennessee	TN	L	1,809,199	3,217,014	32,437	263,866	4,199,872	2,993,268
44.	Texas	TX	L	13,323,055	21,326,367	251,896	1,747,878	34,563,040	25,998,333
45.	Utah	UT	L	1,153,944	2,730,400	(7,341)	87,991	3,411,568	2,870,327
46.	Vermont	VT	L	250,974	447,629	116,872	245,714	486,504	461,330
47.	Virginia	VA	L	2,637,514	4,737,837	224,622	77,698	9,631,601	9,108,889
48.	Washington	WA	L	2,779,897	5,379,489	(24,378)	156,014	6,464,063	4,330,490
49.	West Virginia	WV	L	334,937	476,170	25,665	155,911	824,647	739,352
50.	Wisconsin	WI	L	2,470,038	4,520,793	44,755	380,505	4,669,401	3,074,823
51.	Wyoming	WY	L	138,214	268,552	(655)	39,514	206,409	120,251
52.	American Samoa	AS	N	0	0	0	0	0	0
53.	Guam	GU	N	0	0	0	0	0	0
54.	Puerto Rico	PR	N	0	0	0	0	0	0
55.	U.S. Virgin Islands	VI	L	0	0	(655)	(600)	0	0
56.	Northern Mariana Islands	MP	N	0	0	0	0	0	0
57.	Canada	CAN	N	0	0	0	0	0	0
58.	Aggregate Other Alien	OT	XXX	0	0	0	0	0	0
59.	Totals	XXX		117,802,025	193,843,937	10,164,382	38,209,305	365,507,490	292,256,432
DETAILS OF WRITE-INS									
58001.		XXX							
58002.		XXX							
58003.		XXX							
58998.	Summary of remaining write-ins for Line 58 from overflow page	XXX		0	0	0	0	0	0
58999.	Totals (Lines 58001 through 58003 plus 58998)(Line 58 above)	XXX		0	0	0	0	0	0

(a) Active Status Counts:

L - Licensed or Chartered - Licensed Insurance carrier or domiciled RRG.....52

E - Eligible - Reporting entities eligible or approved to write surplus lines in the state (other than their state of domicile - see DSLI).....0

D - Domestic Surplus Lines Insurer (DSLI) - Reporting entities authorized to write surplus lines in the state of domicile.....0

R - Registered - Non-domiciled RRGs.....0

Q - Qualified - Qualified or accredited reinsurer.....0

N - None of the above - Not allowed to write business in the state.....5

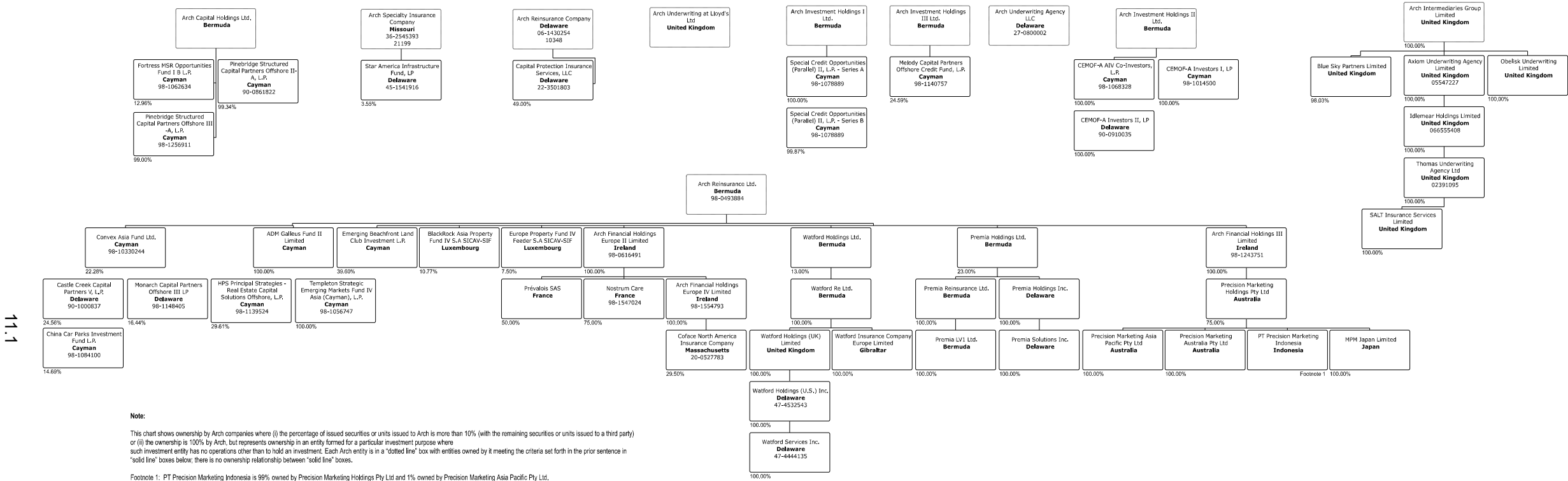
11

11



STATEMENT AS OF JUNE 30, 2021 OF THE UNITED GUARANTY RESIDENTIAL INSURANCE COMPANY

SCHEDULE Y - INFORMATION CONCERNING ACTIVITIES OF INSURER MEMBERS OF A HOLDING COMPANY GROUP
PART I – ORGANIZATIONAL CHART



STATEMENT AS OF JUNE 30, 2021 OF THE UNITED GUARANTY RESIDENTIAL INSURANCE COMPANY

SCHEDULE Y

PART 1A - DETAIL OF INSURANCE HOLDING COMPANY SYSTEM

1	2	3	4	5	6	7	8	9	10	11	12	13	14	15	16
Group Code	Group Name	NAIC Company Code	ID Number	Federal RSSD	CIK	Name of Securities Exchange if Publicly Traded (U.S. or International)	Names of Parent, Subsidiaries Or Affiliates	Domi-ciliary Loca-tion	Relation-ship to Reporting Entity	Directly Controlled by (Name of Entity/Person)	Type of Control (Ownership, Board, Management, Attorney-in-Fact, Influence, Other)	If Control is Owner-ship Provide Percen-tage	Ultimate Controlling Entity(ies)/Person(s)	Is an SCA Filing Re-quired? (Y/N)	*
		.00000	98-0374481		947484	NASDAQ	Arch Capital Group Ltd.	.BMU	UIP	N/A	N/A	0.000	N/A	.N	1
		.00000	02-0576800				Arch Capital Services LLC	.DE	NIA	Arch Services Holdings Inc.	Ownership	100.000	Arch Capital Group Ltd.	.N	
		.00000	98-0602504				Arch Investment Management Ltd.	.BMU	NIA	Arch Capital Group Ltd.	Ownership	100.000	Arch Capital Group Ltd.	.N	
		.00000	98-0493884				Arch Reinsurance Ltd.	.BMU	.IA	Arch Capital Group Ltd.	Ownership	100.000	Arch Capital Group Ltd.	.N	
		.00000	98-1031826				Arch Global Services (Philippines) Inc.	.PHL	NIA	Arch Capital Group Ltd.	Ownership	100.000	Arch Capital Group Ltd.	.N	
		.00000					Arch Global Services (Cyprus) Ltd	.CYP	NIA	Arch Global Services Holdings Ltd.	Ownership	100.000	Arch Capital Group Ltd.	.N	
		.00000					Arch Global Services Holdings Ltd.	.BMU	NIA	Arch Capital Group Ltd.	Ownership	100.000	Arch Capital Group Ltd.	.N	
		.00000	98-1244615				Arch Underwriters Ltd.	.BMU	NIA	Arch Reinsurance Ltd.	Ownership	100.000	Arch Capital Group Ltd.	.N	
		.00000	98-0705201				Arch Underwriting at Lloyd's Ltd	.GBR	NIA	Arch Reinsurance Ltd.	Ownership	100.000	Arch Capital Group Ltd.	.N	
		.00000					Axiom Underwriting Agency Limited	.GBR	NIA	Arch Intermediaries Group Limited	Ownership	100.000	Arch Capital Group Ltd.	.N	
		.00000					Idlemear Holdings Limited	.GBR	NIA	Axiom Underwriting Agency Limited	Ownership	100.000	Arch Capital Group Ltd.	.N	
		.00000					Thomas Underwriting Agency Limited	.GBR	NIA	Idlemear Holdings Limited	Ownership	100.000	Arch Capital Group Ltd.	.N	
		.00000					SALT Insurance Services Limited	.GBR	NIA	Thomas Underwriting Agency Limited	Ownership	100.000	Arch Capital Group Ltd.	.N	
		.00000					Arch Underwriting Agency (Australia) Pty. Ltd.	.AUS	NIA	Arch Managing Agency Limited	Ownership	100.000	Arch Capital Group Ltd.	.N	
		.00000	98-0399846				Arch Capital Holdings Ltd.	.BMU	NIA	Arch Reinsurance Ltd.	Ownership	100.000	Arch Capital Group Ltd.	.N	
		.00000	98-0616488				Arch Financial Holdings Europe I Limited	.IRL	NIA	Arch Reinsurance Ltd.	Ownership	100.000	Arch Capital Group Ltd.	.N	
		.00000	98-0585481				Arch Re Underwriting ApS	.DNK	NIA	Arch Reinsurance Ltd.	Ownership	100.000	Arch Capital Group Ltd.	.N	
		.00000	98-0652764				Arch Syndicate Investments Ltd	.GBR	NIA	Arch Reinsurance Ltd.	Ownership	100.000	Arch Capital Group Ltd.	.N	
		.00000					Gulf Re Holdings Limited	.JEY	NIA	Arch Reinsurance Ltd.	Ownership	100.000	Arch Capital Group Ltd.	.N	
		.00000					Gulf Reinsurance Limited	.ARE	.IA	Gulf Re Holdings Limited	Ownership	100.000	Arch Capital Group Ltd.	.N	
		.00000	98-0705596				Arch Investment Holdings I Ltd.	.BMU	NIA	Arch Reinsurance Ltd.	Ownership	100.000	Arch Capital Group Ltd.	.N	
		.00000	98-0705598				Arch Investment Holdings II Ltd.	.BMU	NIA	Arch Reinsurance Ltd.	Ownership	100.000	Arch Capital Group Ltd.	.N	
		.00000	99-1244244				Arch Investment Holdings III Ltd.	.BMU	NIA	Arch Reinsurance Ltd.	Ownership	100.000	Arch Capital Group Ltd.	.N	
		.00000	98-0705593				Arch Investment Holdings IV Ltd.	.BMU	NIA	Arch Reinsurance Ltd.	Ownership	100.000	Arch Capital Group Ltd.	.N	
		.00000					Watford Holdings Ltd.	.BMU	NIA	Arch Reinsurance Ltd.	Ownership	13.000	Arch Capital Group Ltd.	.N	2
		.00000					Watford Re Ltd.	.BMU	.IA	Watford Holdings Ltd.	Ownership	100.000	Arch Capital Group Ltd.	.N	
		.00000					Watford Holdings (UK) Limited	.GBR	NIA	Watford Re Ltd.	Ownership	100.000	Arch Capital Group Ltd.	.N	
		.00000					Watford Holdings (U.S.) Inc.	.DE	NIA	Watford Holdings (UK) Limited	Ownership	100.000	Arch Capital Group Ltd.	.N	
		.00000					Watford Insurance Company Europe Limited	.GIB	.IA	Watford Holdings (UK) Limited	Ownership	100.000	Arch Capital Group Ltd.	.N	
		.00000					Watford Services Inc.	.DE	NIA	Watford Holdings (U.S.) Inc.	Ownership	100.000	Arch Capital Group Ltd.	.N	
		.00000	99-1245248				Arch Reinsurance Ltd. Escritorio De Representacao Ltda.	.BRA	NIA	Arch Reinsurance Ltd.	Ownership	100.000	Arch Capital Group Ltd.	.N	
		.00000	98-1006574				Arch Underwriting at Lloyd's (Australia) Pty Ltd.	.AUS	NIA	Arch Managing Agency Limited	Ownership	100.000	Arch Capital Group Ltd.	.N	
		.00000	98-0616491				Arch Financial Holdings Europe II Limited	.IRL	NIA	Arch Reinsurance Ltd.	Ownership	100.000	Arch Capital Group Ltd.	.N	
		.00000	98-1243751				Arch Financial Holdings Europe III Limited	.IRL	NIA	Arch Reinsurance Ltd.	Ownership	100.000	Arch Capital Group Ltd.	.N	
		.00000	98-1244422				Arch LMI Pty Ltd	.AUS	NIA	Arch Financial Holdings Australia Pty Ltd.	Ownership	100.000	Arch Capital Group Ltd.	.N	
		.00000	98-1305287				Arch Financial Holdings Australia Pty Ltd	.AUS	NIA	Arch Financial Holdings Europe III Limited	Ownership	100.000	Arch Capital Group Ltd.	.N	
		.00000	47-3497583				Arch Mortgage Risk Transfer Holdings Inc.	.DE	NIA	Arch Financial Holdings Europe III Limited	Ownership	100.000	Arch Capital Group Ltd.	.N	
		.00000	47-4121100				Arch Mortgage Risk Transfer PCC Inc.	.DC	.IA	Arch Mortgage Risk Transfer Holdings Inc.	Ownership	100.000	Arch Capital Group Ltd.	.N	
		.00000	82-3878331				Incorporated Protected Cell No. AMRT-FRE-01	.DC	.IA	Arch Mortgage Risk Transfer PCC Inc.	Ownership	100.000	Arch Capital Group Ltd.	.N	
		.00000	98-0616493				Arch Financial Holdings B.V.	.MLD	NIA	Arch Financial Holdings Europe II Limited	Ownership	100.000	Arch Capital Group Ltd.	.N	
		.00000	98-1024362				Arch Insurance (EU) Designated Activity Company	.IRL	.IA	Arch Financial Holdings Europe II Limited	Ownership	100.000	Arch Capital Group Ltd.	.N	
		.00000	98-1243732				Arch Underwriters Europe Limited	.IRL	NIA	Arch Financial Holdings Europe II Limited	Ownership	100.000	Arch Capital Group Ltd.	.N	
		.00000	98-0611448				Arch Reinsurance Europe Underwriting Designated Activity Company	.IRL	.IA	Arch Financial Holdings Europe II Limited	Ownership	100.000	Arch Capital Group Ltd.	.N	
		.00000	06-1424716				Arch Capital Group (U.S.) Inc.	.DE	NIA	Arch Financial Holdings Europe I Limited	Ownership	90.000	Arch Capital Group Ltd.	.N	
		.00000	06-1424716				Arch Capital Group (U.S.) Inc.	.DE	NIA	Arch Reinsurance Europe Underwriting Designated Activity Company	Ownership	10.000	Arch Capital Group Ltd.	.N	
		.00000	98-1244441				Alwyn Insurance Company Limited	.GIB	.IA	Arch Financial Holdings B.V.	Ownership	100.000	Arch Capital Group Ltd.	.N	

STATEMENT AS OF JUNE 30, 2021 OF THE UNITED GUARANTY RESIDENTIAL INSURANCE COMPANY

SCHEDULE Y

PART 1A - DETAIL OF INSURANCE HOLDING COMPANY SYSTEM

1	2	3	4	5	6	7	8	9	10	11	12	13	14	15	16
Group Code	Group Name	NAIC Company Code	ID Number	Federal RSSD	CIK	Name of Securities Exchange if Publicly Traded (U.S. or International)	Names of Parent, Subsidiaries Or Affiliates	Domi-ciliary Location	Relation-ship to Reporting Entity	Directly Controlled by (Name of Entity/Person)	Type of Control (Ownership, Board, Management, Attorney-in-Fact, Influence, Other)	If Control is Ownership Provide Percentage	Ultimate Controlling Entity(ies)/Person(s)	Is an SCA Filing Re-quired? (Y/N)	*
		.00000	98-0413940				Arch Insurance (UK) LimitedGBR	.IA	Arch Reinsurance Europe Underwriting Designated Activity Company	Ownership.....	100.000	Arch Capital Group Ltd.N	
		.10348	06-1430254				Arch Reinsurance CompanyDE	.IA	Arch Capital Group (U.S.) Inc.	Ownership.....	100.000	Arch Capital Group Ltd.N	
		.00000	47-5374395				Arch Underwriters Inc.DE	.NIA	Arch Reinsurance Company	Ownership.....	100.000	Arch Capital Group Ltd.N	
		.00000	98-0389551				Alternative Re Holdings LimitedBMU	.NIA	Arch Capital Group Ltd.	Ownership.....	100.000	Arch Capital Group Ltd.N	
		.00000	98-0704518				Arch Europe Insurance Services LtdGBR	.NIA	Arch Insurance (UK) Limited	Ownership.....	100.000	Arch Capital Group Ltd.N	
		.00000	43-0971887				Arch Insurance Group Inc.DE	.NIA	Arch Capital Group (U.S.) Inc.	Ownership.....	100.000	Arch Capital Group Ltd.N	
		.00000	22-3501803				Capital Protection Insurance Services, LLC ..	.DE	.NIA	Arch Reinsurance Company	Ownership.....	49.000	Arch Capital Group Ltd.N	
		.00000	98-0625844				Alternative Re LimitedBMU	.IA	Alternative Re Holdings Limited	Ownership.....	100.000	Arch Capital Group Ltd.N	
		.00000	43-0990709				Arch Specialty Insurance Agency Inc.MO	.NIA	Arch Insurance Group Inc.	Ownership.....	100.000	Arch Capital Group Ltd.N	
1279	Arch Capital Group (U.S.) Inc.11150	43-0990710				Arch Insurance CompanyMO	.IA	Arch Reinsurance Company	Ownership.....	100.000	Arch Capital Group Ltd.N	
		.00000	43-1053031				First American Service CorporationMO	.NIA	Arch Insurance Group Inc.	Ownership.....	100.000	Arch Capital Group Ltd.N	
1279	Arch Capital Group (U.S.) Inc.10946	06-1521582				Arch Property Casualty Insurance Company ..	.MO	.IA	Arch Insurance Company	Ownership.....	100.000	Arch Capital Group Ltd.N	
1279	Arch Capital Group (U.S.) Inc.21199	36-2545393				Arch Specialty Insurance CompanyMO	.IA	Arch Insurance Company	Ownership.....	100.000	Arch Capital Group Ltd.N	
1279	Arch Capital Group (U.S.) Inc.30830	39-1128299				Arch Indemnity Insurance CompanyMO	.IA	Arch Property Casualty Insurance Company ..	Ownership.....	100.000	Arch Capital Group Ltd.N	
		.00000	45-5366880				Arch Insurance Solutions Inc.DE	.NIA	Arch Insurance Group Inc.	Ownership.....	100.000	Arch Capital Group Ltd.N	
		.00000	98-1089562				Arch Insurance Canada Ltd.CAN	.IA	Arch Insurance Company	Ownership.....	100.000	Arch Capital Group Ltd.N	
		.00000	46-1950584				Arch U.S. MI Holdings Inc.DE	.NIA	Arch Capital Group (U.S.) Inc.	Ownership.....	100.000	Arch Capital Group Ltd.N	
		.00000	46-1950584				Arch Capital Finance LLCDE	.NIA	Arch U.S. MI Holdings Inc.	Ownership.....	100.000	Arch Capital Group Ltd.N	
		.00000	46-1950257				Arch U.S. MI Services Inc.DE	.NIA	Arch Mortgage Insurance Company	Ownership.....	100.000	Arch Capital Group Ltd.N	
1279	Arch Capital Group (U.S.) Inc.40266	36-3105660				Arch Mortgage Insurance CompanyWI	.IA	Arch U.S. MI Holdings Inc.	Ownership.....	100.000	Arch Capital Group Ltd.N	
1279	Arch Capital Group (U.S.) Inc.18732	39-1080973				Arch Mortgage Guaranty CompanyWI	.IA	Arch U.S. MI Holdings Inc.	Ownership.....	100.000	Arch Capital Group Ltd.N	
1279	Arch Capital Group (U.S.) Inc.29114	95-2621453				Arch Mortgage Assurance CompanyWI	.IA	Arch U.S. MI Holdings Inc.	Ownership.....	100.000	Arch Capital Group Ltd.N	
		.00000					Arch Investment Holdings (Cyprus) LtdCYP	.NIA	Arch Investment Property Holdings Ltd.	Ownership.....	100.000	Arch Capital Group Ltd.N	
		.00000					Arch Investment Property Holdings Ltd.BMU	.NIA	Arch Global Services Holdings Ltd.	Ownership.....	94.060	Arch Capital Group Ltd.N	
		.00000					Arch Investment Property Holdings Ltd.BMU	.NIA	AFP Capital Management Limited	Ownership.....	5.940	IndividualsN	
		.00000	98-1341235				Arch Capital Finance (Ireland) LimitedIRL	.NIA	Europe II Limited	Ownership.....	100.000	Arch Capital Group Ltd.N	
		.00000					Benely Properties LimitedCYP	.NIA	Arch Investment Holdings (Cyprus) Ltd	Ownership.....	100.000	Arch Capital Group Ltd.N	
		.00000					Arcozil Properties LimitedCYP	.NIA	Arch Investment Holdings (Cyprus) Ltd	Ownership.....	100.000	Arch Capital Group Ltd.N	
		.00000					Varony Properties LimitedCYP	.NIA	Arch Investment Holdings (Cyprus) Ltd	Ownership.....	100.000	Arch Capital Group Ltd.N	
		.00000					Galozy Properties LimitedCYP	.NIA	Arch Investment Holdings (Cyprus) Ltd	Ownership.....	100.000	Arch Capital Group Ltd.N	
		.00000					Primantela Properties LimitedCYP	.NIA	Arch Investment Holdings (Cyprus) Ltd	Ownership.....	100.000	Arch Capital Group Ltd.N	
		.00000					Coramono Properties LimitedCYP	.NIA	Arch Investment Holdings (Cyprus) Ltd	Ownership.....	100.000	Arch Capital Group Ltd.N	
		.00000	56-1273575				United Guaranty Services, Inc.NC	.NIA	Arch U.S. MI Holdings Inc.	Ownership.....	100.000	Arch Capital Group Ltd.N	
1279	Arch Capital Group (U.S.) Inc.16667	56-0789396				United Guaranty Residential Insurance Company of North CarolinaNC	.IA	Arch U.S. MI Holdings Inc.	Ownership.....	100.000	Arch Capital Group Ltd.N	
1279	Arch Capital Group (U.S.) Inc.15873	42-0885398				United Guaranty Residential Insurance CompanyNC	.IA	Arch U.S. MI Holdings Inc.	Ownership.....	100.000	Arch Capital Group Ltd.N	
		.00000					Prévalois SASFRA	.NIA	Arch Financial Holdings Europe II Limited ..	Ownership.....	50.000	Arch Capital Group Ltd.N	
		.00000					Emerging Beachfront Land Club Investment L.P.	.CYM	.OTH	Arch Reinsurance Ltd.	Ownership.....	0.000	Arch Capital Group Ltd.N	3
		.00000					Special Credit Opportunities (Parallel) II, L.P. - Series ACYM	.OTH	Arch Investment Holdings I Ltd.	Ownership.....	100.000	Arch Capital Group Ltd.N	3
		.00000					Special Credit Opportunities (Parallel) II, L.P. - Series BCYM	.OTH	Arch Investment Holdings I Ltd.	Ownership.....	99.870	Arch Capital Group Ltd.N	3
		.00000					Fortress MSR Opportunities Fund I B L.P.CYM	.OTH	Arch Capital Holdings Ltd.	Ownership.....	0.000	Arch Capital Group Ltd.N	3
		.00000					ADM Gallus Fund II LimitedCYM	.OTH	Arch Reinsurance Ltd.	Ownership.....	0.000	Arch Capital Group Ltd.N	3
		.00000					Convex Asia Fund Ltd.CYM	.OTH	Arch Reinsurance Ltd.	Ownership.....	0.000	Arch Capital Group Ltd.N	3
		.00000					Melody Capital Partners Offshore Credit Fund, L.P.CYM	.OTH	Arch Investment Holdings III Ltd.	Ownership.....	24.590	Arch Capital Group Ltd.N	3
		.00000					Castle Creek Capital Partners V, L.P.DE	.OTH	Arch Reinsurance Ltd.	Ownership.....	24.560	Arch Capital Group Ltd.N	3

STATEMENT AS OF JUNE 30, 2021 OF THE UNITED GUARANTY RESIDENTIAL INSURANCE COMPANY

SCHEDULE Y

PART 1A - DETAIL OF INSURANCE HOLDING COMPANY SYSTEM

1	2	3	4	5	6	7	8	9	10	11	12	13	14	15	16
Group Code	Group Name	NAIC Company Code	ID Number	Federal RSSD	CIK	Name of Securities Exchange if Publicly Traded (U.S. or International)	Names of Parent, Subsidiaries Or Affiliates	Domi-ciliary Location	Relation-ship to Reporting Entity	Directly Controlled by (Name of Entity/Person)	Type of Control (Ownership, Board, Management, Attorney-in-Fact, Influence, Other)	If Control is Ownership Provide Percen-tage	Ultimate Controlling Entity(ies)/Person(s)	Is an SCA Filing Re-quired? (Y/N)	*
		.00000					HPS Principal Strategies – Real Estate Capital Solutions Offshore, L.P.	.CYM	.OTH	Arch Reinsurance Ltd.	Ownership	0.000	Arch Capital Group Ltd.	.N	.3
		.00000					Pinebridge Structured Capital Partners Offshore II–A, L.P.	.CYM	.OTH	Arch Capital Holdings Ltd.	Ownership	99.340	Arch Capital Group Ltd.	.N	.3
		.00000					Monarch Capital Partners Offshore III LP	.DE	.OTH	Arch Reinsurance Ltd.	Ownership	16.440	Arch Capital Group Ltd.	.N	.3
		.00000	45-1541916				Star America Infrastructure Fund, LP	.DE	.OTH	Arch Specialty Insurance Company	Ownership	0.000	Arch Capital Group Ltd.	.N	.3
		.00000					China Car Parks Investment Fund L.P.	.CYM	.OTH	Arch Reinsurance Ltd.	Ownership	14.690	Arch Capital Group Ltd.	.N	.3
		.00000					Templeton Strategic Emerging Markets Fund IV Asia (Cayman), L.P.	.CYM	.OTH	Arch Reinsurance Ltd.	Ownership	100.000	Arch Capital Group Ltd.	.N	.3
		.00000					CEMOF–A Investors I, LP	.CYM	.OTH	Arch Investment Holdings II Ltd.	Ownership	100.000	Arch Capital Group Ltd.	.N	.3
		.00000					CEMOF–A Investors II, LP	.DE	.OTH	Arch Investment Holdings II Ltd.	Ownership	100.000	Arch Capital Group Ltd.	.N	.3
		.00000					CEMOF–A AIV Co-Investors, LP	.CYM	.OTH	Arch Investment Holdings II Ltd.	Ownership	100.000	Arch Capital Group Ltd.	.N	.3
		.00000					Pinebridge Structured Capital Partners Offshore III–A, L.P.	.CYM	.OTH	Arch Capital Holdings Ltd.	Ownership	99.000	Arch Capital Group Ltd.	.N	.3
		.00000					BlackRock Asia Property Fund IV S.A SICAV–SIF	.LUX	.OTH	Arch Reinsurance Ltd.	Ownership	0.000	Arch Capital Group Ltd.	.N	.3
		.00000					Europe Property Fund IV Feeder S.A SICAV–SIF	.LUX	.OTH	Arch Reinsurance Ltd.	Ownership	0.000	Arch Capital Group Ltd.	.N	.3
		.00000					Premia Holdings Ltd.	.BMU	.NIA	Arch Reinsurance Ltd.	Ownership	23.210	Arch Capital Group Ltd.	.N	.4
		.00000					Premia Reinsurance Ltd.	.BMU	.IA	Premia Holdings Ltd.	Ownership	100.000	Arch Capital Group Ltd.	.N	
		.00000					Premia LV1 Ltd.	.BMU	.NIA	Premia Reinsurance Ltd.	Ownership	100.000	Arch Capital Group Ltd.	.N	
		.00000					Premia Holdings Inc.	.DE	.NIA	Premia Holdings Ltd.	Ownership	100.000	Arch Capital Group Ltd.	.N	
		.00000					Premia Solutions Inc.	.DE	.NIA	Premia Holdings Inc.	Ownership	100.000	Arch Capital Group Ltd.	.N	
		.00000	32-0539299				Arch Mortgage Funding, Inc.	.DE	.NIA	Arch Capital Group (U.S.) Inc.	Ownership	100.000	Arch Capital Group Ltd.	.N	
		.00000	98-1490970				Arch Intermediaries Group Limited	.GBR	.NIA	Arch Reinsurance Ltd.	Ownership	100.000	Arch Capital Group Ltd.	.N	
		.00000					Blue Sky Partners Limited	.GBR	.NIA	Arch Intermediaries Group Limited	Ownership	98.030	Arch Capital Group Ltd.	.N	
		.00000					Archipelago Risk Services Limited	.GBR	.NIA	Blue Sky Partners Limited	Ownership	100.000	Arch Capital Group Ltd.	.N	
		.00000					Lake Shore IC, Inc.	.DC	.IA	Arch Mortgage Risk Transfer PCC Inc.	Ownership	100.000	Arch Capital Group Ltd.	.N	
		.00000	16-1364134				McNeil & Company, Inc.	.NY	.IA	Arch Insurance Company	Ownership	100.000	Arch Capital Group Ltd.	.N	
		.00000					Obelisk Underwriting Limited	.GBR	.NIA	Arch Intermediaries Group Limited	Ownership	100.000	Arch Capital Group Ltd.	.N	
		.00000	83-4516586				First Shield Service Corporation	.MO	.NIA	Arch Insurance Group Inc.	Ownership	100.000	Arch Capital Group Ltd.	.N	
		.00000	38-4119847				First Shield Service Corporation of Florida	.MO	.NIA	Arch Insurance Group Inc.	Ownership	100.000	Arch Capital Group Ltd.	.N	
		.00000	61-1932852				First Shield Consumer Service Corporation	.MO	.NIA	Arch Insurance Group Inc.	Ownership	100.000	Arch Capital Group Ltd.	.N	
		.00000					First Shield Consumer Service Corporation of Florida	.MO	.NIA	Arch Insurance Group Inc.	Ownership	100.000	Arch Capital Group Ltd.	.N	
		.00000	37-1944730				Arch Credit Risk Services (Bermuda) Ltd.	.BMU	.NIA	Arch Reinsurance Ltd.	Ownership	100.000	Arch Capital Group Ltd.	.N	
		.00000	47-5537185				Ventus Risk Management, Inc.	.DE	.NIA	Arch Insurance Group Inc.	Ownership	100.000	Arch Capital Group Ltd.	.N	
1279	Arch Capital Group (U.S.) Inc.	71455	37-0857191				Arch Life Insurance Company of America	.KS	.NIA	Arch Capital Group (U.S.) Inc.	Ownership	100.000	Arch Capital Group Ltd.	.N	
		.00000	84-3725636				Penflex Actuarial Services LLC	.NY	.NIA	McNeil & Company, Inc.	Ownership	100.000	Arch Capital Group Ltd.	.N	
		.00000					Barbican Group Holdings Limited	.GGY	.NIA	Arch Reinsurance Ltd.	Ownership	100.000	Arch Capital Group Ltd.	.N	
		.00000					Clare Management Company Limited	.GGY	.NIA	Barbican Group Holdings Limited	Ownership	100.000	Arch Capital Group Ltd.	.N	
		.00000					Barbican Reinsurance Company Limited	.GGY	.IA	Barbican Group Holdings Limited	Ownership	100.000	Arch Capital Group Ltd.	.N	
		.00000					Barbican Specialty Reinsurance Company Limited	.GGY	.IA	Arch Reinsurance Ltd.	Ownership	100.000	Arch Capital Group Ltd.	.N	
		.00000					Barbican Holdings (UK) Limited	.GBR	.NIA	Barbican Reinsurance Company Limited	Ownership	100.000	Arch Capital Group Ltd.	.N	
		.00000	82-1982589				Barbican Holdings (US) Inc.	.DE	.NIA	Barbican Holdings (UK) Limited	Ownership	100.000	Arch Capital Group Ltd.	.N	
		.00000	82-2146345				Barbican E&S Insurance Managers Inc.	.DE	.IA	Barbican Holdings (US) Inc.	Ownership	100.000	Arch Capital Group Ltd.	.N	
		.00000	82-2133181				Barbican Management Services (US) Inc.	.DE	.NIA	Barbican Holdings (US) Inc.	Ownership	100.000	Arch Capital Group Ltd.	.N	
		.00000					Barbican Corporate Member Limited	.GBR	.NIA	Barbican Holdings (UK) Limited	Ownership	100.000	Arch Capital Group Ltd.	.N	
		.00000					Arch Managing Agency Limited	.GBR	.NIA	Barbican Holdings (UK) Limited	Ownership	100.000	Arch Capital Group Ltd.	.N	
		.00000					Barbican Underwriting Limited	.GBR	.NIA	Barbican Holdings (UK) Limited	Ownership	100.000	Arch Capital Group Ltd.	.N	
		.00000					Castel Underwriting Agencies Limited	.GBR	.NIA	Barbican Holdings (UK) Limited	Ownership	85.000	Arch Capital Group Ltd.	.N	
		.00000					Castel Underwriting Europe BV	.NLD	.NIA	Castel Underwriting Agencies Limited	Ownership	100.000	Arch Capital Group Ltd.	.N	
		.00000					Seacurus Limited	.GBR	.NIA	Barbican Holdings (UK) Limited	Ownership	100.000	Arch Capital Group Ltd.	.N	

STATEMENT AS OF JUNE 30, 2021 OF THE UNITED GUARANTY RESIDENTIAL INSURANCE COMPANY

SCHEDULE Y
PART 1A - DETAIL OF INSURANCE HOLDING COMPANY SYSTEM

1	2	3	4	5	6	7	8	9	10	11	12	13	14	15	16
Group Code	Group Name	NAIC Company Code	ID Number	Federal RSSD	CIK	Name of Securities Exchange if Publicly Traded (U.S. or International)	Names of Parent, Subsidiaries Or Affiliates	Domi-ciliary Loca-tion	Relation-ship to Reporting Entity	Directly Controlled by (Name of Entity/Person)	Type of Control (Ownership, Board, Management, Attorney-in-Fact, Influence, Other)	If Control is Owner-ship Provide Percen-tage	Ultimate Controlling Entity(ies)/Person(s)	Is an SCA Filing Re-quired? (Y/N)	*
		.00000	98-1547024				Nostrum Care	.FRA	.NIA	Arch Financial Holdings Europe II Limited	Ownership	75.000	Arch Capital Group Ltd.	.N	
		.00000					Barbican Intermediaries Group Limited	.GBR	.NIA	Barbican Holdings (UK) Limited	Ownership	100.000	Arch Capital Group Ltd.	.N	
		.00000	98-1544594				Barbican Capital Holdings Limited	.GBR	.NIA	Barbican Holdings (UK) Limited	Ownership	100.000	Arch Capital Group Ltd.	.N	
		.00000					Arch Financial Holdings Europe IV Limited	.IRL	.NIA	Arch Financial Holdings Europe II Limited	Ownership	100.000	Arch Capital Group Ltd.	.N	
		.00000					Arch Investments II LLC	.DE	.NIA	Arch Capital Holdings Ltd.	Ownership	100.000	Arch Capital Group Ltd.	.N	
										Arch Financial Holdings Europe III Limited					
		.00000					Precision Marketing Holdings Pty Ltd	.AUS	.NIA		Ownership	75.000	Arch Capital Group Ltd.	.N	
		.00000					Precision Marketing Asia Pacific Pty Ltd	.AUS	.NIA	Precision Marketing Holdings Pty Ltd	Ownership	100.000	Arch Capital Group Ltd.	.N	
		.00000					Precision Marketing Australia Pty Ltd	.AUS	.NIA	Precision Marketing Holdings Pty Ltd	Ownership	100.000	Arch Capital Group Ltd.	.N	
		.00000					PT Precision Marketing Indonesia	.IDN	.NIA	Precision Marketing Holdings Pty Ltd	Ownership	99.000	Arch Capital Group Ltd.	.N	
		.00000					PT Precision Marketing Indonesia	.IDN	.NIA	Precision Marketing Asia Pacific Pty Ltd	Ownership	1.000	Arch Capital Group Ltd.	.N	
		.00000					MPM Japan Limited	.JPN	.NIA	Precision Marketing Holdings Pty Ltd	Ownership	100.000	Arch Capital Group Ltd.	.N	
1279	Arch Capital Group (U.S.) Inc.	.00000	26-3015410				Out of Towne, LLC	.VA	.IA	Arch Insurance Group Inc.	Ownership	100.000	Arch Capital Group Ltd.	.N	
		.00000					Greysbridge Ltd.	.BMU	.NIA	Arch Capital Group Ltd.	Ownership	100.000	Arch Capital Group Ltd.	.N	
		.00000					Greysbridge Holdings Ltd.	.BMU	.NIA	Arch Reinsurance Ltd.	Ownership	100.000	Arch Capital Group Ltd.	.N	
		.00000	86-2848610				Arch Services Holdings Inc.	.DE	.NIA	Arch Capital Group (U.S.) Inc.	Ownership	100.000	Arch Capital Group Ltd.	.N	
		.00000					Arena NV	.BEL	.NIA	Castel Underwriting Europe BV	Ownership	100.000	Arch Capital Group Ltd.	.N	
		.00000					Castel LTDCO 1 Limited			Castel Underwriting Agencies Ltd.	Ownership	60.000	Arch Capital Group Ltd.	.N	
		.00000					Castel LTDCO 2 Limited			Castel Underwriting Agencies Ltd.	Ownership	65.800	Arch Capital Group Ltd.	.N	
		.00000					Arch Investment ICAV	.IRL		Arch Reinsurance Ltd.	Ownership	100.000	Arch Capital Group Ltd.	.N	
		.00000	87-1239197				Soundview Claims Solutions Inc.	.DE	.NIA	Arch Insurance Group Inc.	Ownership	100.000	Arch Capital Group Ltd.	.N	

Asterisk	Explanation
1	The Vanguard Group, Inc. owns 8.52% of the common shares of Arch Capital Group Ltd.
2	Watford holdings Ltd. is owned by various shareholders, each holding less than 10% of the voting shares, except for Arch Reinsurance Ltd., which holds approximately 13% of the voting shares of Watford Holdings Ltd.
3	Entity is an investment vehicle which is not operated or controlled by Arch.
4	Premia Holdings Ltd. is owned by unaffiliated shareholders, and Arch Reinsurance Ltd. holds approximately 23.21% of the voting shares of Premia Holdings Ltd.

PART 1 - LOSS EXPERIENCE

Line of Business		Current Year to Date			4 Prior Year to Date Direct Loss Percentage
		1 Direct Premiums Earned	2 Direct Losses Incurred	3 Direct Loss Percentage	
1.	Fire	0	0	0.0	0.0
2.	Allied Lines	0	0	0.0	0.0
3.	Farmowners multiple peril	0	0	0.0	0.0
4.	Homeowners multiple peril	0	0	0.0	0.0
5.	Commercial multiple peril	0	0	0.0	0.0
6.	Mortgage guaranty	168,819,905	30,921,735	18.3	44.8
8.	Ocean marine	0	0	0.0	0.0
9.	Inland marine	0	0	0.0	0.0
10.	Financial guaranty	0	0	0.0	0.0
11.1	Medical professional liability - occurrence	0	0	0.0	0.0
11.2	Medical professional liability - claims-made	0	0	0.0	0.0
12.	Earthquake	0	0	0.0	0.0
13.	Group accident and health	0	0	0.0	0.0
14.	Credit accident and health	0	0	0.0	0.0
15.	Other accident and health	0	0	0.0	0.0
16.	Workers' compensation	0	0	0.0	0.0
17.1	Other liability - occurrence	0	0	0.0	0.0
17.2	Other liability - claims-made	0	0	0.0	0.0
17.3	Excess workers' compensation	0	0	0.0	0.0
18.1	Products liability - occurrence	0	0	0.0	0.0
18.2	Products liability - claims-made	0	0	0.0	0.0
19.1,19.2	Private passenger auto liability	0	0	0.0	0.0
19.3,19.4	Commercial auto liability	0	0	0.0	0.0
21.	Auto physical damage	0	0	0.0	0.0
22.	Aircraft (all perils)	0	0	0.0	0.0
23.	Fidelity	0	0	0.0	0.0
24.	Surety	0	0	0.0	0.0
26.	Burglary and theft	0	0	0.0	0.0
27.	Boiler and machinery	0	0	0.0	0.0
28.	Credit	0	0	0.0	0.0
29.	International	0	0	0.0	0.0
30.	Warranty	0	0	0.0	0.0
31.	Reinsurance - Nonproportional Assumed Property	XXX	XXX	XXX	XXX
32.	Reinsurance - Nonproportional Assumed Liability	XXX	XXX	XXX	XXX
33.	Reinsurance - Nonproportional Assumed Financial Lines	XXX	XXX	XXX	XXX
34.	Aggregate write-ins for other lines of business	0	0	0.0	0.0
35.	Totals	168,819,905	30,921,735	18.3	44.8
DETAILS OF WRITE-INS					
3401.				
3402.				
3403.				
3498.	Summary of remaining write-ins for Line 34 from overflow page	0	0	0.0	0.0
3499.	Totals (Lines 3401 through 3403 plus 3498)(Line 34 above)	0	0	0.0	0.0

PART 2 - DIRECT PREMIUMS WRITTEN

Line of Business		1	2	3
		Current Quarter	Current Year to Date	Prior Year Year to Date
1.	Fire	0	0	0
2.	Allied Lines	0	0	0
3.	Farmowners multiple peril	0	0	0
4.	Homeowners multiple peril	0	0	0
5.	Commercial multiple peril	0	0	0
6.	Mortgage guaranty	54,104,278	117,802,025	193,843,939
8.	Ocean marine	0	0	0
9.	Inland marine	0	0	0
10.	Financial guaranty	0	0	0
11.1	Medical professional liability - occurrence	0	0	0
11.2	Medical professional liability - claims-made	0	0	0
12.	Earthquake	0	0	0
13.	Group accident and health	0	0	0
14.	Credit accident and health	0	0	0
15.	Other accident and health	0	0	0
16.	Workers' compensation	0	0	0
17.1	Other liability - occurrence	0	0	0
17.2	Other liability - claims-made	0	0	0
17.3	Excess workers' compensation	0	0	0
18.1	Products liability - occurrence	0	0	0
18.2	Products liability - claims-made	0	0	0
19.1,19.2	Private passenger auto liability	0	0	0
19.3,19.4	Commercial auto liability	0	0	0
21.	Auto physical damage	0	0	0
22.	Aircraft (all perils)	0	0	0
23.	Fidelity	0	0	0
24.	Surety	0	0	0
26.	Burglary and theft	0	0	0
27.	Boiler and machinery	0	0	0
28.	Credit	0	0	0
29.	International	0	0	0
30.	Warranty	0	0	0
31.	Reinsurance - Nonproportional Assumed Property	XXX	XXX	XXX
32.	Reinsurance - Nonproportional Assumed Liability	XXX	XXX	XXX
33.	Reinsurance - Nonproportional Assumed Financial Lines	XXX	XXX	XXX
34.	Aggregate write-ins for other lines of business	0	0	0
35.	Totals	54,104,278	117,802,025	193,843,939
DETAILS OF WRITE-INS				
3401.			
3402.			
3403.			
3498.	Summary of remaining write-ins for Line 34 from overflow page	0	0	0
3499.	Totals (Lines 3401 through 3403 plus 3498)(Line 34 above)	0	0	0

STATEMENT AS OF JUNE 30, 2021 OF THE UNITED GUARANTY RESIDENTIAL INSURANCE COMPANY

PART 3 (000 omitted)

LOSS AND LOSS ADJUSTMENT EXPENSE RESERVES SCHEDULE

	1	2	3	4	5	6	7	8	9	10	11	12	13	
Years in Which Losses Occurred	Prior Year-End Known Case Loss and LAE Reserves	Prior Year-End IBNR Loss and LAE Reserves	Total Prior Year-End Loss and LAE Reserves (Cols. 1+2)	2021 Loss and LAE Payments on Claims Reported as of Prior Year-End	2021 Loss and LAE Payments on Claims Unreported as of Prior Year-End	Total 2021 Loss and LAE Payments (Cols. 4+5)	Q.S. Date Known Case Loss and LAE Reserves on Claims Reported and Open as of Prior Year End	Q.S. Date Known Case Loss and LAE Reserves on Claims Reported or Reopened Subsequent to Prior Year End	Q.S. Date IBNR Loss and LAE Reserves	Total Q.S. Loss and LAE Reserves (Cols.7+8+9)	Prior Year-End Known Case Loss and LAE Reserves Developed (Savings)/ Deficiency (Cols.4+7 minus Col. 1)	Prior Year-End IBNR Loss and LAE Reserves Developed (Savings)/ Deficiency (Cols. 5+8+9 minus Col. 2)	Prior Year-End Total Loss and LAE Reserve Developed (Savings)/ Deficiency (Cols. 11+12)	
1. 2018 + Prior	50,661	939	51,600	3,013	221	3,234	43,098	222	364	43,684	(4,550)	(132)	(4,682)	
2. 2019	40,861	1,312	42,173	1,718	100	1,818	34,061	187	595	34,843	(5,082)	(430)	(5,512)	
3. Subtotals 2019 + Prior	91,522	2,251	93,773	4,731	321	5,052	77,159	409	959	78,527	(9,632)	(562)	(10,194)	
4. 2020	120,638	13,018	133,656	(285)	12	(273)	128,775	7,568	2,867	139,210	7,852	(2,571)	5,281	
5. Subtotals 2020 + Prior	212,160	15,269	227,429	4,446	333	4,779	205,934	7,977	3,826	217,737	(1,780)	(3,133)	(4,913)	
6. 2021	XXX	XXX	XXX	XXX	26	26	XXX	28,137	853	28,990	XXX	XXX	XXX	
7. Totals	212,160	15,269	227,429	4,446	359	4,805	205,934	36,114	4,679	246,727	(1,780)	(3,133)	(4,913)	
8. Prior Year-End Surplus As Regards Policyholders	181,387											Col. 11, Line 7 As % of Col. 1 Line 7	Col. 12, Line 7 As % of Col. 2 Line 7	Col. 13, Line 7 As % of Col. 3 Line 7
												1. (0.8)	2. (20.5)	3. (2.2)
												Col. 13, Line 7 As a % of Col. 1 Line 8		
												4. (2.7)		

STATEMENT AS OF JUNE 30, 2021 OF THE UNITED GUARANTY RESIDENTIAL INSURANCE COMPANY

SUPPLEMENTAL EXHIBITS AND SCHEDULES INTERROGATORIES

The following supplemental reports are required to be filed as part of your statement filing. However, in the event that your company does not transact the type of business for which the special report must be filed, your response of NO to the specific interrogatory will be accepted in lieu of filing a "NONE" report and a bar code will be printed below. If the supplement is required of your company but is not being filed for whatever reason enter SEE EXPLANATION and provide an explanation following the interrogatory questions.

	Response
1. Will the Trusteed Surplus Statement be filed with the state of domicile and the NAIC with this statement?	NO
2. Will Supplement A to Schedule T (Medical Professional Liability Supplement) be filed with this statement?	NO
3. Will the Medicare Part D Coverage Supplement be filed with the state of domicile and the NAIC with this statement?	NO
4. Will the Director and Officer Insurance Coverage Supplement be filed with the state of domicile and the NAIC with this statement?	NO

Explanations:

1. The data for this supplement is not required to be filed.
2. The data for this supplement is not required to be filed.
3. The data for this supplement is not required to be filed.
4. The data for this supplement is not required to be filed.

Bar Codes:

1. Trusteed Surplus Statement [Document Identifier 490]	 1 5 8 7 3 2 0 2 1 4 9 0 0 0 0 0 2
2. Supplement A to Schedule T [Document Identifier 455]	 1 5 8 7 3 2 0 2 1 4 5 5 0 0 0 0 2
3. Medicare Part D Coverage Supplement [Document Identifier 365]	 1 5 8 7 3 2 0 2 1 3 6 5 0 0 0 0 2
4. Director and Officer Supplement [Document Identifier 505]	 1 5 8 7 3 2 0 2 1 5 0 5 0 0 0 0 2

STATEMENT AS OF JUNE 30, 2021 OF THE UNITED GUARANTY RESIDENTIAL INSURANCE COMPANY

OVERFLOW PAGE FOR WRITE-INS

Additional Write-ins for Assets Line 25

		Current Statement Date			4 December 31 Prior Year Net Admitted Assets
		1 Assets	2 Nonadmitted Assets	3 Net Admitted Assets (Cols. 1 - 2)	
2504.	Other	1,593	0	1,593	35,100
2597.	Summary of remaining write-ins for Line 25 from overflow page	1,593	0	1,593	35,100

SCHEDULE A - VERIFICATION

Real Estate

	1	2
	Year to Date	Prior Year Ended December 31
1. Book/adjusted carrying value, December 31 of prior year		
2. Cost of acquired:		
2.1 Actual cost at time of acquisition		
2.2 Additional investment made after acquisition		
3. Current year change in encumbrances		
4. Total gain (loss) on disposals		
5. Deduct amounts received on disposals		
6. Total foreign exchange change in book/adjusted carrying value		
7. Deduct current year's other than temporary impairment recognized		
8. Deduct current year's depreciation		
9. Book/adjusted carrying value at the end of current period (Lines 1+2+3+4-5+6-7-8)		
10. Deduct total nonadmitted amounts		
11. Statement value at end of current period (Line 9 minus Line 10)		

SCHEDULE B - VERIFICATION

Mortgage Loans

	1	2
	Year to Date	Prior Year Ended December 31
1. Book value/recorded investment excluding accrued interest, December 31 of prior year		
2. Cost of acquired:		
2.1 Actual cost at time of acquisition		
2.2 Additional investment made after acquisition		
3. Capitalized deferred interest and other		
4. Accrual of discount		
5. Unrealized valuation increase (decrease)		
6. Total gain (loss) on disposals		
7. Deduct amounts received on disposals		
8. Deduct amortization of premium and mortgage interest points and commitment fees		
9. Total foreign exchange change in book value/recorded investment excluding accrued interest		
10. Deduct current year's other than temporary impairment recognized		
11. Book value/recorded investment excluding accrued interest at end of current period (Lines 1+2+3+4+5+6-7-8+9-10)		
12. Total valuation allowance		
13. Subtotal (Line 11 plus Line 12)		
14. Deduct total nonadmitted amounts		
15. Statement value at end of current period (Line 13 minus Line 14)		

SCHEDULE BA - VERIFICATION

Other Long-Term Invested Assets

	1	2
	Year to Date	Prior Year Ended December 31
1. Book/adjusted carrying value, December 31 of prior year		
2. Cost of acquired:		
2.1 Actual cost at time of acquisition		
2.2 Additional investment made after acquisition		
3. Capitalized deferred interest and other		
4. Accrual of discount		
5. Unrealized valuation increase (decrease)		
6. Total gain (loss) on disposals		
7. Deduct amounts received on disposals		
8. Deduct amortization of premium and depreciation		
9. Total foreign exchange change in book/adjusted carrying value		
10. Deduct current year's other than temporary impairment recognized		
11. Book/adjusted carrying value at end of current period (Lines 1+2+3+4+5+6-7-8+9-10)		
12. Deduct total nonadmitted amounts		
13. Statement value at end of current period (Line 11 minus Line 12)		

SCHEDULE D - VERIFICATION

Bonds and Stocks

	1	2
	Year to Date	Prior Year Ended December 31
1. Book/adjusted carrying value of bonds and stocks, December 31 of prior year	1,817,684,395	1,609,464,016
2. Cost of bonds and stocks acquired	1,080,628,888	2,253,779,241
3. Accrual of discount	954,812	558,297
4. Unrealized valuation increase (decrease)	(29,942)	812,821
5. Total gain (loss) on disposals	12,975,544	51,272,366
6. Deduct consideration for bonds and stocks disposed of	1,053,642,470	2,095,496,478
7. Deduct amortization of premium	1,000,945	2,321,364
8. Total foreign exchange change in book/adjusted carrying value	0	0
9. Deduct current year's other than temporary impairment recognized	0	634,247
10. Total investment income recognized as a result of prepayment penalties and/or acceleration fees	989,282	249,743
11. Book/adjusted carrying value at end of current period (Lines 1+2+3+4+5-6-7+8-9+10)	1,858,559,564	1,817,684,395
12. Deduct total nonadmitted amounts	0	0
13. Statement value at end of current period (Line 11 minus Line 12)	1,858,559,564	1,817,684,395

STATEMENT AS OF JUNE 30, 2021 OF THE UNITED GUARANTY RESIDENTIAL INSURANCE COMPANY

SCHEDULE D - PART 1B

Showing the Acquisitions, Dispositions and Non-Trading Activity
During the Current Quarter for all Bonds and Preferred Stock by NAIC Designation

NAIC Designation	1 Book/Adjusted Carrying Value Beginning of Current Quarter	2 Acquisitions During Current Quarter	3 Dispositions During Current Quarter	4 Non-Trading Activity During Current Quarter	5 Book/Adjusted Carrying Value End of First Quarter	6 Book/Adjusted Carrying Value End of Second Quarter	7 Book/Adjusted Carrying Value End of Third Quarter	8 Book/Adjusted Carrying Value December 31 Prior Year
BONDS								
1. NAIC 1 (a)	1,418,958,888	677,352,673	593,161,556	(104,492,406)	1,418,958,888	1,398,657,598	0	1,374,117,743
2. NAIC 2 (a)	419,559,915	59,578,603	96,269,477	101,166,659	419,559,915	484,035,699	0	420,969,370
3. NAIC 3 (a)	21,041,365	0	901,459	3,221,344	21,041,365	23,361,251	0	21,626,082
4. NAIC 4 (a)	982,198	0	18,881	5,098	982,198	968,414	0	971,198
5. NAIC 5 (a)	0	0	0	0	0	0	0	0
6. NAIC 6 (a)	0	0	0	0	0	0	0	0
7. Total Bonds	1,860,542,365	736,931,275	690,351,373	(99,305)	1,860,542,365	1,907,022,962	0	1,817,684,393
PREFERRED STOCK								
8. NAIC 1	0	0	0	0	0	0	0	0
9. NAIC 2	0	0	0	0	0	0	0	0
10. NAIC 3	0	0	0	0	0	0	0	0
11. NAIC 4	0	0	0	0	0	0	0	0
12. NAIC 5	0	0	0	0	0	0	0	0
13. NAIC 6	0	0	0	0	0	0	0	0
14. Total Preferred Stock	0	0	0	0	0	0	0	0
15. Total Bonds and Preferred Stock	1,860,542,365	736,931,275	690,351,373	(99,305)	1,860,542,365	1,907,022,962	0	1,817,684,393

(a) Book/Adjusted Carrying Value column for the end of the current reporting period includes the following amount of short-term and cash equivalent bonds by NAIC designation:

NAIC 1 \$50,000,000 ; NAIC 2 \$0 ; NAIC 3 \$0 NAIC 4 \$0 ; NAIC 5 \$0 ; NAIC 6 \$0

SCHEDULE DA - PART 1

Short-Term Investments

	1	2	3	4	5
	Book/Adjusted Carrying Value	Par Value	Actual Cost	Interest Collected Year-to-Date	Paid for Accrued Interest Year-to-Date
9199999 Totals	65,003,912	xxx	65,000,000	0	0

SCHEDULE DA - VERIFICATION

Short-Term Investments

	1	2
	Year To Date	Prior Year Ended December 31
1. Book/adjusted carrying value, December 31 of prior year	0	2,199,942
2. Cost of short-term investments acquired	65,000,000	1,985,611
3. Accrual of discount	3,912	14,447
4. Unrealized valuation increase (decrease)	0	0
5. Total gain (loss) on disposals	0	0
6. Deduct consideration received on disposals	0	4,200,000
7. Deduct amortization of premium	0	0
8. Total foreign exchange change in book/adjusted carrying value	0	0
9. Deduct current year's other than temporary impairment recognized	0	0
10. Book/adjusted carrying value at end of current period (Lines 1+2+3+4+5-6-7+8-9)	65,003,912	0
11. Deduct total nonadmitted amounts	0	0
12. Statement value at end of current period (Line 10 minus Line 11)	65,003,912	0

Schedule DB - Part A - Verification - Options, Caps, Floors, Collars, Swaps and Forwards

N O N E

Schedule DB - Part B - Verification - Futures Contracts

N O N E

Schedule DB - Part C - Section 1 - Replication (Synthetic Asset) Transactions (RSATs) Open

N O N E

Schedule DB-Part C-Section 2-Reconciliation of Replication (Synthetic Asset) Transactions Open

N O N E

Schedule DB - Verification - Book/Adjusted Carrying Value, Fair Value and Potential Exposure of
Derivatives

N O N E

SCHEDULE E - PART 2 - VERIFICATION

(Cash Equivalents)

	1	2
	Year To Date	Prior Year Ended December 31
1. Book/adjusted carrying value, December 31 of prior year	18,200,229	23,045,375
2. Cost of cash equivalents acquired	691,375,962	1,232,117,749
3. Accrual of discount	0	0
4. Unrealized valuation increase (decrease)	0	0
5. Total gain (loss) on disposals	0	0
6. Deduct consideration received on disposals	668,526,878	1,236,962,895
7. Deduct amortization of premium	0	0
8. Total foreign exchange change in book/adjusted carrying value	0	0
9. Deduct current year's other than temporary impairment recognized	0	0
10. Book/adjusted carrying value at end of current period (Lines 1+2+3+4+5-6-7+8-9)	41,049,313	18,200,229
11. Deduct total nonadmitted amounts	0	0
12. Statement value at end of current period (Line 10 minus Line 11)	41,049,313	18,200,229

Schedule A - Part 2 - Real Estate Acquired and Additions Made

N O N E

Schedule A - Part 3 - Real Estate Disposed

N O N E

Schedule B - Part 2 - Mortgage Loans Acquired and Additions Made

N O N E

Schedule B - Part 3 - Mortgage Loans Disposed, Transferred or Repaid

N O N E

Schedule BA - Part 2 - Other Long-Term Invested Assets Acquired and Additions Made

N O N E

Schedule BA - Part 3 - Other Long-Term Invested Assets Disposed, Transferred or Repaid

N O N E

STATEMENT AS OF JUNE 30, 2021 OF THE UNITED GUARANTY RESIDENTIAL INSURANCE COMPANY

SCHEDULE D - PART 3

Show All Long-Term Bonds and Stock Acquired During the Current Quarter

1	2	3	4	5	6	7	8	9	10
CUSIP Identification	Description	Foreign	Date Acquired	Name of Vendor	Number of Shares of Stock	Actual Cost	Par Value	Paid for Accrued Interest and Dividends	NAIC Designation, NAIC Designation Modifier and SVO Administrative Symbol
91282C-BL-4	UNITED STATES TREASURY		04/30/2021	Various		5,925,319	6,220,000	12,783	1.A
91282C-BR-1	UNITED STATES TREASURY		04/09/2021	Various		13,575,097	13,615,000	2,269	1.A
91282C-BS-9	UNITED STATES TREASURY		04/05/2021	JP Morgan Securities Inc.		19,808,594	20,000,000	4,098	1.A
91282C-BT-7	UNITED STATES TREASURY		04/23/2021	Various		19,860,094	19,920,000	9,638	1.A
91282C-BU-4	UNITED STATES TREASURY		04/22/2021	Various		118,630,458	118,705,000	2,881	1.A
91282C-BV-2	UNITED STATES TREASURY		04/20/2021	WELLS FARGO SECURITIES LLC		5,959,297	5,950,000	427	1.A
91282C-BW-0	UNITED STATES TREASURY		05/27/2021	Various		6,603,015	6,615,000	4,067	1.A
91282C-BX-8	UNITED STATES TREASURY		05/25/2021	BANK OF AMERICA SECURITIES		4,447,740	4,450,000	408	1.A
91282C-BZ-3	UNITED STATES TREASURY		04/30/2021	Citigroup (SSB)		14,919,141	15,000,000	1,529	1.A
91282C-CB-5	UNITED STATES TREASURY		06/03/2021	Various		6,536,006	6,529,600	5,894	1.A
91282C-CC-3	UNITED STATES TREASURY		05/27/2021	BARCLAYS CAPITAL INC.		4,630,938	4,640,000	536	1.A
91282C-CE-9	UNITED STATES TREASURY		06/17/2021	BARCLAYS CAPITAL INC.		3,601,688	3,600,000	2,582	1.A
91282C-CF-6	UNITED STATES TREASURY		06/09/2021	Various		31,811,926	31,865,000	4,106	1.A
91282C-CH-2	UNITED STATES TREASURY		06/29/2021	BANK OF AMERICA SECURITIES		30,008,203	30,000,000	0	1.A
91282C-CK-5	UNITED STATES TREASURY		06/22/2021	BNYM/PIERPONT SEC		89,994,076	90,220,000	0	1.A
0599999. Subtotal - Bonds - U.S. Governments						376,311,590	377,329,600	51,217	XXX
00914A-AM-4	AIR LEASE CORP		05/17/2021	J.P. MORGAN SECURITIES INC.		1,354,449	1,365,000	0	2.B FE
023135-BX-3	AMAZON.COM INC		05/10/2021	J P MORGAN SECURITIES		14,935,200	15,000,000	0	1.E FE
023135-BY-1	AMAZON.COM INC		05/10/2021	J P MORGAN SECURITIES		9,994,100	10,000,000	0	1.E FE
03027X-AK-6	AMERICAN TOWER CORP		05/19/2021	SUNTRUST ROBINSON HUMPHREY INC		2,723,075	2,500,000	8,438	2.C FE
03881C-AG-6	ARCOLO 2021-FL1 C - CDO/CMS	C	04/12/2021	J P MORGAN SECURITIES		1,839,296	1,837,000	3,587	1.G FE
04002Q-AJ-1	AREIT 18CRE2 D - CIBS		04/01/2021	WELLS FARGO SECURITIES LLC		1,477,018	1,497,610	2,637	2.C FE
05586A-AG-3	BSPT 2018-FL4 C - CDO		04/07/2021	Various		1,546,375	1,550,000	2,375	1.G FE
05586A-AL-2	BSPT 2018-FL4 E - CDO		04/08/2021	BARCLAYS CAPITAL INC		3,170,000	3,200,000	7,855	2.C Z
056054-AJ-8	BX 19XL F - CIBS		05/07/2021	SG AMERICAS SECURITIES, LLC		527,015	526,686	805	1.D FM
05609G-AG-3	BXMT 21FL4 C - CDO		04/20/2021	Various		3,500,000	3,500,000	312	1.G Z
05682Q-AS-5	BCC 2017-1 A2R - CDO	C	05/06/2021	CITIGROUP GLOBAL MARKETS INC.		2,500,000	2,500,000	0	1.A FE
05683N-AA-0	BAIN CAPITAL CREDIT CLO 2021-3 LTD. - CDO	C	04/27/2021	CITIGROUP GLOBAL MARKETS INC.		6,000,000	6,000,000	0	1.A Z
06051G-HX-0	BANK OF AMERICA CORP		04/21/2021	BANK OF AMERICA SECURITIES		3,112,650	3,000,000	240	1.G FE
06051G-JQ-3	BANK OF AMERICA CORP		05/25/2021	BANK OF AMERICA SECURITIES		5,474,628	5,400,000	18,901	1.F FE
06051G-JZ-3	BANK OF AMERICA CORP		06/07/2021	BANK OF AMERICA SECURITIES		15,000,000	15,000,000	0	1.F FE
07134U-AA-5	BATLN XX A - CDO	C	04/28/2021	MORGAN STANLEY & CO. LLC		3,000,000	3,000,000	0	1.A FE
07134U-AQ-0	BATLN XX AJ - CDO	C	04/28/2021	MORGAN STANLEY & COMPANY		3,000,000	3,000,000	0	1.A FE
07134W-AE-3	BATLN 21 AJ - CDO	C	06/08/2021	BANK OF AMERICA SECURITIES		2,600,000	2,600,000	0	1.A Z
12546J-AE-4	CHCP 2021-FL1 B - CDO	C	04/22/2021	J P MORGAN SECURITIES		1,001,544	1,000,000	0	1.D FE
12546J-AG-9	CHCP 2021-FL1 C - CDO	C	04/22/2021	GOLDMAN		1,252,024	1,250,000	0	1.G Z
12551J-AL-0	C1FC FUNDING 2017 IV, LTD. - CDO		05/27/2021	BANK OF AMERICA SECURITIES		5,000,000	5,000,000	0	1.A Z
12551J-AN-6	C1FC FUNDING 2017 IV, LTD. - CDO		05/27/2021	BANK OF AMERICA SECURITIES		5,000,000	5,000,000	0	1.C Z
14054R-30-4	CAPITALA FINANCE CORP		05/19/2021	NATL FINANCIAL SERVICES CORP (NFS)		24,774	24,650	0	2.C Z
172967-MM-8	CITIGROUP INC		04/27/2021	CITIGROUP GLOBAL MARKETS INC.		1,500,000	1,500,000	0	1.G FE
172967-NA-5	CITIGROUP INC		06/02/2021	CITIGROUP GLOBAL MARKETS INC.		20,000,000	20,000,000	0	1.G FE
224044-ON-5	COX COMMUNICATIONS INC		05/18/2021	WELLS FARGO SECURITIES LLC		1,992,280	2,000,000	0	2.B FE
22822V-AT-8	CROWN CASTLE INTERNATIONAL CORP		05/19/2021	BARCLAYS CAPITAL INC FIXED INC		2,889,660	3,000,000	23,625	2.C FE
22822V-AY-7	CROWN CASTLE INTERNATIONAL CORP		06/15/2021	J.P. MORGAN SECURITIES INC.		793,954	796,000	0	2.C FE
233331-AY-3	DTE ENERGY CO		04/13/2021	DAIWA CAPITAL MARKETS AMERICA		2,667,550	2,500,000	2,771	2.B FE
23802W-AC-5	COLO 211 B - ABS		06/24/2021	DEUTSCHE BANK SECURITIES, INC.		1,378,706	1,364,000	301	2.B FE
25265L-AA-8	DNFRA 2021-1 A - ABS		06/08/2021	BARCLAYS CAPITAL INC.		10,000,000	10,000,000	0	1.F FE
25265L-AC-4	DNFRA 2021-1 B - ABS		06/08/2021	BARCLAYS CAPITAL INC FIXED INC		750,000	750,000	0	2.C FE
25278X-AM-1	DIAMONDBACK ENERGY INC		04/01/2021	Various		1,586,256	1,500,000	16,927	2.C FE
26943B-40-7	FIRST EAGLE ALTERNATIVE CAPITAL BDC INC		05/18/2021	STIFEL NICOLAUS & COMPANY		568,875	568,875	0	2.C Z
29444U-BR-6	EQUINIX INC		05/03/2021	BANK OF AMERICA SECURITIES		381,934	384,000	0	2.B FE
30161N-AX-9	EXELON CORP		04/13/2021	BNP Paribas		2,813,925	2,500,000	0	2.B FE
31429K-AE-3	FEDERATION OF CAISSES DESJARDINS DU QUEB	C	05/18/2021	BARCLAYS CAPITAL INC		4,999,100	5,000,000	0	1.F FE
36166V-AF-2	GC1 FUNDING I LLC, SERIES 2021-1 - ABS	C	06/04/2021	CREDIT SUISSE SECURITIES		1,999,835	2,000,000	0	2.B FE
36259B-AJ-6	GPMIT 2019-FL2 D - CDO		04/09/2021	J P MORGAN SECURITIES		2,928,750	3,000,000	6,376	2.C FE
36264B-AG-5	GPMIT 21FL3 C - CIBS	C	05/05/2021	J P MORGAN SECURITIES		2,300,000	2,300,000	0	1.G FE

STATEMENT AS OF JUNE 30, 2021 OF THE UNITED GUARANTY RESIDENTIAL INSURANCE COMPANY

SCHEDULE D - PART 3

Show All Long-Term Bonds and Stock Acquired During the Current Quarter

1	2	3	4	5	6	7	8	9	10
CUSIP Identification	Description	Foreign	Date Acquired	Name of Vendor	Number of Shares of Stock	Actual Cost	Par Value	Paid for Accrued Interest and Dividends	NAIC Designation, NAIC Designation Modifier and SVO Administrative Symbol
37045X-DL-7	GENERAL MOTORS FINANCIAL COMPANY INC		06/07/2021	BARCLAYS CAPITAL INC		935,370	937,000	.0	2.C FE
38141G-YE-8	GOLDMAN SACHS GROUP INC		06/07/2021	GOLDMAN SACHS & CO, NY		7,500,000	7,500,000	.0	1.F FE
38141G-YG-3	GOLDMAN SACHS GROUP INC		06/07/2021	GOLDMAN SACHS & CO, NY		10,000,000	10,000,000	.0	1.F FE
390320-60-4	GREAT ELM CAPITAL CORP		06/17/2021	PERSHING DIV OF DLJ SEC LNDING		48,977	49,875	.0	2.C Z
404119-CC-1	HCA INC		06/21/2021	WELLS FARGO SECURITIES LLC		1,242,350	1,250,000	.0	2.C FE
404280-CS-6	HSBC HOLDINGS PLC	C	05/17/2021	HSBC SECURITIES (USA), INC.		5,000,000	5,000,000	.0	1.F FE
466313-AL-7	JABIL INC		04/07/2021	J.P. MORGAN SECURITIES INC.		1,048,801	1,049,000	.0	2.C FE
46647P-CJ-3	JPMORGAN CHASE & CO		05/24/2021	JP Morgan Securities Inc.		5,000,000	5,000,000	.0	1.F FE
48275P-AG-6	KREF 2018-FL1 C - CDO		04/06/2021	J P MORGAN SECURITIES		1,000,938	1,000,000	1,288	1.G FE
48275P-AJ-0	KREF 2018-FL1 D - CDO		04/06/2021	J P MORGAN SECURITIES		250,234	250,000	406	2.C FE
53946M-AG-2	LNCR 2018-CRE1 C - CDO	C	04/26/2021	MORGAN STANLEY & COMPANY		499,844	500,000	481	1.G FE
53946M-AJ-6	LNCR 2018-CRE1 D - CDO	C	04/12/2021	J P MORGAN SECURITIES		1,997,500	2,000,000	5,093	2.B FE
53947X-AE-2	LNCR 21CRE5 AS - CDO	C	05/25/2021	GOLDMAN		2,000,000	2,000,000	.0	1.A Z
540543-AA-3	LOGAN CLO I LTD. - CDO	C	04/30/2021	BARCLAYS CAPITAL INC		5,000,000	5,000,000	.0	1.A Z
55282L-AG-1	MF1 19FL2 C - CDO	C	04/27/2021	Various		2,402,625	2,400,000	1,464	1.G FE
55282X-AJ-9	MF1 21FL5 D - CDO		04/07/2021	CREDIT SUISSE SECURITIES		1,500,000	1,500,000	2,499	2.B FE
55283T-AG-3	MF1 2021-FL6 C - CDO		06/10/2021	JP MORGAN SECURITIES LLC		1,000,000	1,000,000	.0	1.G FE
585017-AX-2	MICROCHIP TECHNOLOGY INC		05/18/2021	J.P. MORGAN SECURITIES INC.		1,000,000	1,000,000	.0	2.C FE
617446-8K-8	MORGAN STANLEY		04/01/2021	TORONTO DOMINION SECS USA INC		1,002,700	1,000,000	1,537	1.F FE
61747Y-EA-9	MORGAN STANLEY		05/26/2021	MORGAN STANLEY & CO. LLC		5,000,000	5,000,000	.0	1.F FE
61772B-AB-9	MORGAN STANLEY		04/19/2021	MORGAN STANLEY & COMPANY		12,500,000	12,500,000	.0	1.F FE
620076-BU-2	MOTOROLA SOLUTIONS INC		05/10/2021	BANK OF AMERICA SECURITIES		67,000	67,000	.0	2.C FE
629167-AG-2	NLY 19FL2 C - CDO		04/28/2021	WELLS FARGO SECURITIES LLC		1,482,188	1,500,000	1,848	1.G FE
64133G-AR-1	NEUBERGER BERMAN LOAN ADVISERS CLO 37 LT	C	05/26/2021	Credit Suisse Securities (USA), LLC		5,000,000	5,000,000	.0	1.A Z
64133G-AT-7	NEUBERGER BERMAN LOAN ADVISERS CLO 37 LT	C	05/26/2021	Credit Suisse Securities (USA), LLC		2,000,000	2,000,000	.0	1.C Z
652526-70-8	NEWTEK BUSINESS SERVICES CORP		05/12/2021	NATL FINANCIAL SERVICES CORP (NFS)		13,808	13,500	.0	2.A Z
67098U-AN-5	OAKC 6R AR - CDO	C	06/17/2021	BANK OF AMERICA SECURITIES		10,000,000	10,000,000	.0	1.A Z
67103B-50-6	OFS CAPITAL CORP		06/24/2021	NATL FINANCIAL SERVICES CORP (NFS)		3,355	3,325	.0	2.B Z
67113L-AL-0	OPC 1917R A1R - CDO	C	06/17/2021	CITIGROUP GLOBAL MARKETS INC.		2,500,000	2,500,000	.0	1.A FE
69121K-AF-1	CIVIL ROCK CAPITAL CORP		04/19/2021	BANK OF AMERICA SECURITIES		2,482,175	2,500,000	.0	2.C FE
69181V-30-5	OXFORD SQUARE CAPITAL CORP		04/19/2021	NATL FINANCIAL SERVICES CORP (NFS)		226	225	.0	2.B Z
69181V-50-3	OXFORD SQUARE CAPITAL CORP		05/14/2021	NATL FINANCIAL SERVICES CORP (NFS)		554,863	565,725	.0	2.B Z
69346T-AG-9	PFP 2019-5 C - CDO/CMBS		04/27/2021	Various		1,598,485	1,603,000	1,598	1.G FE
69346T-AJ-3	PFP 2019-5 D - CDO/CMBS		04/06/2021	CREDIT SUISSE SECURITIES		1,985,000	2,000,000	3,522	2.B FE
69346W-AG-2	PFP 2019-6 C - CMBS	C	05/20/2021	WELLS FARGO SECURITIES LLC		375,469	375,000	229	1.G FE
708062-AC-8	PENNANTPARK INVESTMENT CORP		04/14/2021	RAYMOND JAMES & ASSOCIATES		466,388	469,000	.0	2.B Z
73688F-AA-0	PORTMAN RIDGE FINANCE CORPORATION		06/23/2021	DIWAC		3,130,933	3,203,000	9,007	2.C Z
75887N-AW-9	REGT6 6RR AR2 - CDO		04/28/2021	NOMURA SECURITIES/FIXED INCOME		4,000,000	4,000,000	.0	1.A Z
75903H-AA-0	REGIONAL 2021-1 LTD 1A A - ABS		04/16/2021	Not Available		2,977,500	3,000,000	.0	2.A Z
78403D-AT-7	SBATOW 211 C - RMBS		04/29/2021	BARCLAYS CAPITAL INC		6,000,000	6,000,000	.0	1.F FE
78485W-AG-4	STWD 2019-FL1 C - CDO		04/06/2021	J P MORGAN SECURITIES		1,000,000	1,000,000	1,371	1.G FE
78486B-AG-9	STWD 21FL2 C - CDO		04/20/2021	Various		3,002,188	3,000,000	.0	1.G Z
78486B-AG-9	STWD 21FL2 C - CDO		05/10/2021	WELLS FARGO SECURITIES LLC		430,672	430,000	185	1.G FE
87165B-AD-5	SYNCHRONY FINANCIAL		04/12/2021	Various		2,181,750	2,000,000	13,931	2.C FE
87267C-AA-6	TRP 2021 LLC - ABS		05/04/2021	Unknown		1,499,690	1,500,000	.0	1.F FE
87275Q-AG-2	TRTX 2018-FL2 C - CMBS		04/06/2021	J P MORGAN SECURITIES		2,399,724	2,402,727	3,535	1.G FE
87276V-AG-0	TRTX 19FL3 C - CDO		04/05/2021	WELLS FARGO SECURITIES LLC		497,188	500,000	644	1.G FE
88315L-AL-2	TMOL 211 A - RMBS	C	06/23/2021	Unknown		962,878	973,333	227	1.F FE
889175-BF-1	TOLEDO EDISON CO		04/29/2021	MORGAN STANLEY & COMPANY		1,994,060	2,000,000	.0	2.A FE
896442-40-7	TRINITY CAPITAL INC		05/10/2021	STIFEL NICOLAUS & COMPANY		191,204	183,850	.0	2.B Z
89656G-AA-2	TRL 211 A - ABS		06/23/2021	WELLS FARGO SECURITIES LLC		2,504,785	2,500,000	.0	1.F FE
89683L-AA-8	TRIUMPH RAIL LLC - ABS		05/25/2021	Unknown		2,498,975	2,500,000	.0	1.F FE
90354P-AA-5	STEAM 2021-3 A - RMBS		06/09/2021	CREDIT SUISSE SECURITIES		249,903	250,000	.0	1.F FE
91835R-AG-5	VMC 21FL4 C - CDO		05/18/2021	GOLDMAN		900,000	900,000	.0	1.G FE
91835R-AJ-9	VMC 21FL4 D - CDO		05/18/2021	GOLDMAN		1,000,000	1,000,000	.0	2.B FE
92852L-AA-7	VITERRA FINANCE BV	C	04/14/2021	BARCLAYS CAPITAL INC.		14,957,400	15,000,000	.0	2.C FE
92916M-AF-8	VOYA CLO 2017-1 LTD - CDO	C	04/30/2021	BAIRD, ROBERT W., & COMPANY IN		4,000,000	4,000,000	.0	1.A Z

STATEMENT AS OF JUNE 30, 2021 OF THE UNITED GUARANTY RESIDENTIAL INSURANCE COMPANY

SCHEDULE D - PART 3

Show All Long-Term Bonds and Stock Acquired During the Current Quarter

1	2	3	4	5	6	7	8	9	10
CUSIP Identification	Description	Foreign	Date Acquired	Name of Vendor	Number of Shares of Stock	Actual Cost	Par Value	Paid for Accrued Interest and Dividends	NAIC Designation, NAIC Designation Modifier and SVO Administrative Symbol
95040Q-AN-4	WELLTOWER INC06/23/2021	WELLS FARGO SECURITIES LLC		1,199,571	1,203,000	0	2.A FE
97316F-AA-9	WIND RIVER 2013-1 CLO LTD. - CDO	C05/26/2021	CITIGROUP GLOBAL MARKETS INC.		5,000,000	5,000,000	0	1.A Z
3899999. Subtotal - Bonds - Industrial and Miscellaneous (Unaffiliated)						310,619,686	309,992,382	144,013	XXX
8399997. Total - Bonds - Part 3						686,931,275	687,321,982	195,230	XXX
8399998. Total - Bonds - Part 5						XXX	XXX	XXX	XXX
8399999. Total - Bonds						686,931,275	687,321,982	195,230	XXX
8999997. Total - Preferred Stocks - Part 3						0	XXX	0	XXX
8999998. Total - Preferred Stocks - Part 5						XXX	XXX	XXX	XXX
8999999. Total - Preferred Stocks						0	XXX	0	XXX
31336#-10-6	FHLBA06/22/2021	Unknown	5,525,000	552,500		0	
9199999. Subtotal - Common Stocks - Industrial and Miscellaneous (Unaffiliated) Other						552,500	XXX	0	XXX
9799997. Total - Common Stocks - Part 3						552,500	XXX	0	XXX
9799998. Total - Common Stocks - Part 5						XXX	XXX	XXX	XXX
9799999. Total - Common Stocks						552,500	XXX	0	XXX
9899999. Total - Preferred and Common Stocks						552,500	XXX	0	XXX
9999999 - Totals						687,483,775	XXX	195,230	XXX

STATEMENT AS OF JUNE 30, 2021 OF THE UNITED GUARANTY RESIDENTIAL INSURANCE COMPANY

SCHEDULE D - PART 4

Show All Long-Term Bonds and Stock Sold, Redeemed or Otherwise Disposed of During the Current Quarter

1	2	3	4	5	6	7	8	9	10	Change In Book/Adjusted Carrying Value					16	17	18	19	20	21	22
										11	12	13	14	15							
CUSIP Ident-ification	Description	For-eign	Disposal Date	Name of Purchaser	Number of Shares of Stock	Consid-eration	Par Value	Actual Cost	Prior Year Book/ Adjusted Carrying Value	Unrealized Valuation Increase/ (Decrease)	Current Year's (Amor-tization)/ Accretion	Current Year's Other Than Temporary Impairment Recogn-ized	Total Change in Book/ Adjusted Carrying Value (11 + 12 - 13)	Total Foreign Exchange Change in Book /Adjusted Carrying Value	Book/ Adjusted Carrying Value at Disposal Date	Foreign Exchange Gain (Loss) on Disposal	Realized Gain (Loss) on Disposal	Total Gain (Loss) on Disposal	Bond Interest/ Stock Dividends Received During Year	Stated Con-tractual Maturity Date	NAIC Desig-nation, NAIC Desig-nation Modifier and SVO Admini-strative Symbol
36179V-SG-6 36179V-TV-2 38380J-H6-8	G2 MA6819 - RMBS G2 MA6864 - RMBS GNR 2018-068 A - CMBS		06/01/2021 06/01/2021 06/01/2021	Paydown Paydown Paydown		2,591,888 153,313 584,913	2,591,887 153,313 584,913	2,740,921 158,894 573,547	2,732,143 158,759 578,494	.0 .0 .0	(140,256) (5,446) 6,419	.0 .0 .0	(140,256) (5,446) 6,419	.0 .0 .0	2,591,887 153,313 584,913	.0 .0 .0	.0 .0 .0	.0 .0 .0	27,491 1,341 6,160	08/20/2050 09/20/2050 04/16/2050	1.A 1.A 1.A
912828-XW-5	UNITED STATES TREASURY		04/05/2021	HSBC SECURITIES (USA), INC.		76,523	75,000	74,309	74,786	.0	.37	.0	.37	.0	74,823	.0	1,701	1,701	.348	06/30/2022	1.A
912828-ZK-9	UNITED STATES TREASURY		04/08/2021	BARCLAYS CAPITAL INC FIXED INC		5,806,329	5,800,000	5,804,362	5,803,134	.0	(556)	.0	(556)	.0	5,802,578	.0	3,751	3,751	4,494	04/30/2022	1.A
912828-ZP-8	UNITED STATES TREASURY		04/05/2021	WELLS FARGO ADVISORS LLC		1,597,688	1,600,000	1,592,250	1,593,730	.0	692	.0	692	.0	1,594,422	.0	3,265	3,265	785	05/15/2023	1.A
912828-ZX-1	UNITED STATES TREASURY		04/05/2021	DEUTSCHE BANK SECURITIES, INC.		27,006,328	27,000,000	26,987,344	26,990,258	.0	1,706	.0	1,706	.0	26,991,964	.0	14,364	14,364	8,950	06/30/2022	1.A
91282C-AC-5	UNITED STATES TREASURY		04/06/2021	JP Morgan Securities Inc.		25,008,789	25,000,000	25,004,883	25,003,894	.0	(649)	.0	(649)	.0	25,003,245	.0	5,544	5,544	21,323	07/31/2022	1.A
91282C-AG-6	UNITED STATES TREASURY		04/06/2021	Anherst Pierpont Securities		29,005,664	29,000,000	28,998,867	28,999,036	.0	153	.0	153	.0	28,999,189	.0	6,475	6,475	21,868	08/31/2022	1.A
91282C-AR-2	UNITED STATES TREASURY		04/06/2021	BMO Capital Markets		30,000,000	30,000,000	29,987,109	29,988,179	.0	1,712	.0	1,712	.0	29,989,892	.0	10,108	10,108	16,367	10/31/2022	1.A
91282C-AS-0	UNITED STATES TREASURY		04/19/2021	Various		8,204,187	8,200,000	8,200,156	8,200,146	.0	23	.0	23	.0	8,200,169	.0	4,017	4,017	4,479	10/31/2022	1.A
91282C-AW-1	UNITED STATES TREASURY		04/05/2021	JP Morgan Securities Inc.		3,755,594	3,760,000	3,766,575	3,766,399	.0	(584)	.0	(584)	.0	3,765,815	.0	(10,221)	(10,221)	3,687	11/15/2023	1.A
91282C-AX-9	UNITED STATES TREASURY		04/05/2021	JP Morgan Securities Inc.		8,697,621	8,700,000	8,698,000	8,698,069	.0	263	.0	263	.0	8,698,333	.0	(711)	(711)	3,794	11/30/2022	1.A
91282C-BD-2	UNITED STATES TREASURY		04/01/2021	Anherst Pierpont Securities		39,985,720	40,000,000	39,996,094	.0	.0	465	.0	465	.0	39,996,558	.0	(10,838)	(10,838)	13,122	12/31/2022	1.A
91282C-BK-6	UNITED STATES TREASURY		06/10/2021	Various		9,903,922	9,900,000	9,902,380	.0	.0	(265)	.0	(265)	.0	9,902,115	.0	1,807	1,807	2,261	01/31/2023	1.A
91282C-BL-4	UNITED STATES TREASURY		05/18/2021	BANK OF AMERICA SECURITIES		4,774,414	5,000,000	4,769,871	.0	.0	3,066	.0	3,066	.0	4,772,937	.0	1,477	1,477	14,451	02/15/2031	1.A
91282C-BR-1	UNITED STATES TREASURY		05/10/2021	JP Morgan Securities Inc.		4,997,070	5,000,000	4,987,305	.0	.0	642	.0	642	.0	4,987,947	.0	9,123	9,123	1,970	03/15/2024	1.A
91282C-BS-9	UNITED STATES TREASURY		06/08/2021	Various		20,036,328	20,000,000	19,808,594	.0	.0	3,832	.0	3,832	.0	19,812,426	.0	223,903	223,903	40,642	03/31/2028	1.A
91282C-BT-7	UNITED STATES TREASURY		04/30/2021	HSBC SECURITIES		19,820,400	19,920,000	19,860,094	.0	.0	312	.0	312	.0	19,860,406	.0	(40,006)	(40,006)	13,470	03/31/2026	1.A
91282C-BU-4	UNITED STATES TREASURY		06/22/2021	BNYM/PIERPONT SEC		118,514,887	118,705,000	118,630,458	.0	.0	7,909	.0	7,909	.0	118,638,366	.0	(123,480)	(123,480)	34,055	03/31/2023	1.A
91282C-BW-0	UNITED STATES TREASURY		06/28/2021	JP Morgan Securities Inc.		6,579,858	6,615,000	6,603,015	.0	.0	193	.0	193	.0	6,603,209	.0	(23,351)	(23,351)	8,089	04/30/2026	1.A
91282C-BX-8	UNITED STATES TREASURY		06/28/2021	GOLDMAN SACHS & CO, NY		4,441,656	4,450,000	4,447,740	.0	.0	105	.0	105	.0	4,447,845	.0	(6,189)	(6,189)	907	04/30/2023	1.A
91282C-BZ-3	UNITED STATES TREASURY		05/10/2021	J P MORGAN SECURITIES		14,997,070	15,000,000	14,919,141	.0	.0	271	.0	271	.0	14,919,412	.0	77,659	77,659	6,114	04/30/2028	1.A
91282C-CF-6	UNITED STATES TREASURY		06/29/2021	HSBC SECURITIES (USA), INC.		31,672,067	31,865,000	31,811,926	.0	.0	779	.0	779	.0	31,812,705	.0	(140,638)	(140,638)	19,589	05/31/2026	1.A
91362*-AA-9	Mortgage Guaranty Tax and Loss Bond		06/30/2021	Unknown		7,934,000	7,934,000	7,934,000	7,934,000	.0	.0	.0	.0	.0	7,934,000	.0	.0	.0	.0	12/12/2023	1.A
0599999	Subtotal - Bonds - U.S. Governments					426,146,229	426,854,113	426,257,835	150,521,026	.0	(119,174)	.0	(119,174)	.0	426,138,469	.0	7,760	7,760	275,757	XXX	XXX
452227-FL-0	ILLINOIS ST SALES TAX REV		06/15/2021	Maturity @ 100.00		1,530,000	1,530,000	1,536,120	1,530,784	.0	(784)	.0	(784)	.0	1,530,000	.0	.0	.0	21,275	06/15/2021	2.B FE
3199999	Subtotal - Bonds - U.S. Special Revenues					1,530,000	1,530,000	1,536,120	1,530,784	.0	(784)	.0	(784)	.0	1,530,000	.0	.0	.0	21,275	XXX	XXX
000367-AA-0	AASET 2018-1 A - ABS		06/16/2021	Paydown		18,881	18,881	18,881	17,847	1,365	(330)	.0	1,035	.0	18,881	.0	.0	.0	300	01/16/2038	4.B FE
00206R-MJ-8	AT&T INC		06/21/2021	MORGAN STANLEY & CO.		2,504,475	2,500,000	2,497,625	.0	.0	195	.0	195	.0	2,497,820	.0	6,655	6,655	5,625	03/25/2024	2.B FE
002824-BP-4	ABBOTT LABORATORIES		06/28/2021	BNP Paribas		2,934,780	3,000,000	2,981,100	2,982,350	.0	1,189	.0	1,189	.0	2,983,540	.0	(48,760)	(48,760)	35,075	01/30/2028	1.F FE
00287Y-BV-0	ABBVIE INC		04/15/2021	BNP PARIBAS SECURITIES CORP		989,739	922,000	931,305	929,966	.0	(385)	.0	(385)	.0	929,581	.0	60,158	60,158	11,182	11/21/2026	2.B FE
00287Y-BZ-1	ABBVIE INC		06/23/2021	Susquehanna		790,328	750,000	749,333	749,474	.0	62	.0	62	.0	749,537	.0	40,791	40,791	11,592	11/21/2024	2.B FE
023135-BX-3	AMAZON.COM INC		05/18/2021	GOLDMAN SACHS & CO, NY		9,974,700	10,000,000	9,956,800	.0	.0	183	.0	183	.0	9,956,983	.0	17,717	17,717	2,222	05/12/2026	1.E FE
023765-AA-8	AMERICAN AIRLINES 2016-2 PASS THROUGH TR		06/15/2021	Paydown		103,500	103,500	98,176	99,039	.0	4,461	.0	4,461	.0	103,500	.0	.0	.0	1,656	12/15/2029	2.A FE
023771-S2-5	AMERICAN AIRLINES INC PASS THROUGH CERTI		04/15/2021	Paydown		24,259	24,259	21,955	21,958	.0	2,301	.0	2,301	.0	24,259	.0	.0	.0	394	04/15/2030	2.C FE
02377A-AA-6	AMERICAN AIRLINES PASS THROUGH TRUST SER		04/01/2021	Paydown		172,227	172,227	168,372	160,245	8,783	3,199	.0	11,982	.0	172,227	.0	.0	.0	3,186	04/01/2028	3.A FE
02377C-AA-2	AMERICAN AIRLINES 2017-2 PASS THROUGH TR		04/15/2021	Paydown		36,127	36,127	32,650	32,659	.0	3,467	.0	3,467	.0	36,127	.0	.0	.0	650	04/15/2031	2.C FE
035242-AP-1	ANHEUSER-BUSCH INBEV FINANCE INC		04/27/2021	Goldman Sachs & Co.		2,207,260	2,000,000	2,029,618	2,022,829	.0	(1,418)	.0	(1,418)	.0	2,021,410	.0	185,850	185,850	54,344	02/01/2026	2.B FE

STATEMENT AS OF JUNE 30, 2021 OF THE UNITED GUARANTY RESIDENTIAL INSURANCE COMPANY

SCHEDULE D - PART 4

Show All Long-Term Bonds and Stock Sold, Redeemed or Otherwise Disposed of During the Current Quarter

1	2	3	4	5	6	7	8	9	10	Change In Book/Adjusted Carrying Value					16	17	18	19	20	21	22
										11	12	13	14	15							
CUSIP Identification	Description	For- eign	Disposal Date	Name of Purchaser	Number of Shares of Stock	Consid- eration	Par Value	Actual Cost	Prior Year Book/ Adjusted Carrying Value	Unrealized Valuation Increase/ (Decrease)	Current Year's (Amor- tization)/ Accretion	Current Year's Other Than Temporary Impairment Recogn- ized	Total Change in Book/ Adjusted Carrying Value (11 + 12 - 13)	Total Foreign Exchange Change in Book /Adjusted Carrying Value	Book/ Adjusted Carrying Value at Disposal Date	Foreign Exchange Gain (Loss) on Disposal	Realized Gain (Loss) on Disposal	Total Gain (Loss) on Disposal	Bond Interest/ Stock Dividends Received During Year	Stated Con- tractual Maturity Date	NAIC Desig- nation, NAIC Desig- nation Modifier and SVO Admini- strative Symbol
036752-AJ-2	ANTHEM INC		06/21/2021	MORGAN STANLEY & CO. LLC		2,094,540	2,000,000	1,998,240	1,998,629	.0	155	.0	155	.0	1,998,784	.0	95,756	95,756	44,597	01/15/2025	2.B FE
037833-BZ-2	APPLE INC		05/18/2021	BANK OF AMERICA SECURITIES		5,320,450	5,000,000	4,986,350	4,992,299	.0	516	.0	516	.0	4,992,471	.0	327,979	327,979	97,319	08/04/2026	1.B FE
037833-CU-2	APPLE INC		04/09/2021	BANK OF AMERICA SECURITIES WELLS FARGO SECURITIES		5,067,775	4,750,000	4,608,355	4,667,313	.0	6,576	.0	6,576	.0	4,673,889	.0	393,886	393,886	57,158	05/11/2024	1.B FE
03880W-AJ-7	ARCLO 2020-FL1 D - CDO	C	05/24/2021	LLC		2,001,250	2,000,000	1,995,000	.0	.0	(54)	.0	(54)	.0	1,994,946	.0	6,304	6,304	14,073	02/15/2035	2.A FE
04002Q-AJ-1	AREIT 18CRE2 D - CMBS		04/16/2021	Paydown		2,995,221	2,995,221	2,979,309	1,499,625	.0	18,577	.0	18,577	.0	2,995,221	.0	.0	.0	17,514	11/16/2035	2.C FE
05364C-BE-1	AVERY 7RR AR2 - CDO	C	04/15/2021	Paydown		92,470	92,470	92,470	.0	.0	.0	.0	.0	.0	92,470	.0	.0	.0	.0	01/17/2028	1.A FE
05586A-AL-2	BSPRT 2018-FL4 E - CDO		05/05/2021	LLC		995,000	1,000,000	990,625	.0	.0	247	.0	247	.0	990,872	.0	4,128	4,128	4,652	09/17/2035	
056054-AH-2	BX 19XL E - CMBS		06/15/2021	Paydown		52,868	52,868	53,001	52,849	.0	19	.0	19	.0	52,868	.0	.0	.0	504	10/15/2036	1.D FM
056054-AJ-8	BX 19XL F - CMBS		06/15/2021	Paydown		19,738	19,738	19,750	.0	.0	(12)	.0	(12)	.0	19,738	.0	.0	.0	67	10/15/2036	1.D FM
05607K-AJ-0	BXMT 2017-FL1 D - CDO/CMBS		04/20/2021	Paydown		1,950,000	1,950,000	1,945,260	1,945,302	.0	4,698	.0	4,698	.0	1,950,000	.0	.0	.0	18,380	06/15/2035	2.C FE
05875F-AY-3	BALLY 2016-1 AR2 - CDO		04/15/2021	Paydown		162,424	162,424	162,424	.0	.0	.0	.0	.0	.0	162,424	.0	.0	.0	496	10/16/2028	1.A FE
06051G-HF-9	BANK OF AMERICA CORP		05/25/2021	BANK OF AMERICA SECURITIES		5,697,216	5,400,000	5,400,000	5,400,000	.0	.0	.0	.0	.0	5,400,000	.0	297,216	297,216	139,515	03/05/2024	1.F FE
06051G-HT-9	BANK OF AMERICA CORP		04/21/2021	BANK OF AMERICA SECURITIES		3,284,790	3,000,000	3,000,000	3,000,000	.0	.0	.0	.0	.0	3,000,000	.0	284,790	284,790	18,842	04/23/2027	1.F FE
06051G-HY-8	BANK OF AMERICA CORP		06/09/2021	SECURITIES		10,359,500	10,000,000	10,000,000	10,000,000	.0	.0	.0	.0	.0	10,000,000	.0	359,500	359,500	166,797	02/13/2026	1.F FE
06541X-AH-3	BANK 2017-BNK7 XB - CMBS		04/22/2021	MORGAN STANLEY CO		432,008	.0	476,699	446,064	.0	(22,179)	.0	(22,179)	.0	423,885	.0	8,124	8,124	34,755	09/17/2060	1.E FE
09228Y-AB-8	BBIRD 2016-1 A - ABS	C	06/15/2021	Paydown		78,125	78,125	78,510	.0	.0	(232)	.0	(232)	.0	78,125	.0	.0	.0	1,377	12/16/2041	1.G FE
10373Q-BM-1	BP CAPITAL MARKETS AMERICA INC		04/08/2021	LLC		3,335,465	3,500,000	3,500,000	3,500,000	.0	.0	.0	.0	.0	3,500,000	.0	(164,535)	(164,535)	41,150	08/10/2030	1.F FE
11043X-AA-1	IAGLN 2019-1 AA - ABS		06/15/2021	SECURITIES (USA), INC.		81,518	81,518	81,518	81,518	.0	.0	.0	.0	.0	81,518	.0	.0	.0	1,345	06/15/2034	1.F FE
111013-AL-2	SKY LTD	C	04/20/2021	WELLS FARGO ADVISORS LLC		5,495,150	5,000,000	5,199,800	5,143,079	.0	(11,198)	.0	(11,198)	.0	5,131,882	.0	363,268	363,268	112,500	09/16/2024	1.G FE
11134L-AR-0	BROADCOM CORP		06/03/2021	JP Morgan Securities Inc.		3,765,055	3,500,000	3,734,115	3,718,479	.0	(12,871)	.0	(12,871)	.0	3,705,608	.0	59,447	59,447	109,569	01/15/2028	2.C FE
11135F-BK-6	BROADCOM INC		04/15/2021	BARCLAYS CAPITAL INC		511,925	500,000	506,461	.0	.0	(27)	.0	(27)	.0	506,434	.0	5,491	5,491	902	04/15/2033	2.C FE
12327B-AA-4	BJETS 211 A - ABS		06/15/2021	Paydown		88,694	88,694	88,693	.0	.0	.1	.0	.1	.0	88,694	.0	.0	.0	251	04/15/2036	1.G FE
12531Y-AP-3	CFORE 2016-C4 AHR - CMBS		06/01/2021	Paydown		4,521	4,521	4,546	4,533	.0	(13)	.0	(13)	.0	4,521	.0	.0	.0	59	05/10/2058	1.D FM
12546J-AE-4	CHCP 2021-FL1 B - CDO	C	05/18/2021	JP MORGAN SECURITIES LLC		1,001,250	1,000,000	1,001,544	.0	.0	(53)	.0	(53)	.0	1,001,491	.0	(241)	(241)	1,668	02/17/2038	1.D FE
125523-CM-0	CIGNA CORP		04/01/2021	RBC CAPITAL MARKETS		431,168	435,000	434,495	.0	.0	5	.0	5	.0	434,500	.0	(3,332)	(3,332)	947	03/15/2031	2.B FE
12563L-AN-7	CLIF 2020-1 A - ABS		06/18/2021	Paydown		12,500	12,500	12,494	12,494	.0	.0	.0	.0	.0	12,500	.0	.0	.0	108	09/18/2045	1.F FE
12563L-AQ-0	CLIF 202 A - RMBS		06/01/2021	Paydown		62,500	62,500	63,464	.0	.0	(964)	.0	(964)	.0	62,500	.0	.0	.0	317	09/18/2045	1.F FE
12563L-AS-6	CLIF 203 A - ABS		06/18/2021	Paydown		82,500	82,500	82,483	82,483	.0	.17	.0	.17	.0	82,500	.0	.0	.0	712	10/18/2045	1.F FE
12565K-AA-5	CLIF 211 A - RMBS		06/18/2021	Paydown		99,357	99,357	99,355	.0	.0	.2	.0	.2	.0	99,357	.0	.0	.0	342	02/18/2046	1.F FE
12574Q-2Q-2	INVESTCORP CREDIT MANAGEMENT BDC INC		04/26/2021	Call @ 25.00		94,925	94,925	95,471	.0	.0	(651)	.0	(651)	.0	94,820	.0	105	105	1,830	07/01/2023	
12597D-AG-0	CSAIL 2019-C18 XB - CMBS		04/22/2021	MORGAN STANLEY CO		856,403	.0	914,194	859,731	.0	(29,126)	.0	(29,126)	.0	830,604	.0	25,799	25,799	51,199	12/17/2052	1.D FE
12665Q-CU-2	CVS HEALTH CORP		04/21/2021	MORGAN STANLEY & CO. LLC		2,137,240	2,000,000	1,927,300	1,942,098	.0	3,011	.0	3,011	.0	1,945,109	.0	192,131	192,131	22,681	06/01/2026	2.B FE
140501-AB-3	CAPITAL SOUTHWEST CORP		06/10/2021	NATL FINANCIAL SERVICES CORP (NFS)		5,300	5,000	5,106	.0	.0	(6)	.0	(6)	.0	5,100	.0	200	200	103	01/31/2026	
14054R-3Q-4	LOGAN RIDGE FINANCE CORP		06/17/2021	CORP (NFS)		24,629	24,650	24,774	.0	.0	(162)	.0	(162)	.0	24,611	.0	18	18	237	05/31/2022	
14855L-AB-6	CLAST 171 A - ABS		06/15/2021	Paydown		332,712	362,656	362,656	362,656	.0	.1	.0	.1	.0	362,656	.0	(29,944)	(29,944)	4,665	07/15/2042	2.B FE
14856C-AA-7	CLAST 2018-1 A - ABS		06/15/2021	Paydown		88,025	88,025	87,958	87,976	.0	49	.0	49	.0	88,025	.0	.0	.0	1,711	06/15/2043	2.A FE
166756-AL-0	CHEVRON USA INC		06/01/2021	Various		10,496,503	10,750,000	10,750,000	10,750,000	.0	.0	.0	.0	.0	10,750,000	.0	(253,498)	(253,498)	88,092	08/12/2027	1.D FE
166764-BW-9	CHEVRON CORP		05/18/2021	MORGAN STANLEY & CO. LLC		5,142,450	5,000,000	5,000,000	5,000,000	.0	.0	.0	.0	.0	5,000,000	.0	142,450	142,450	40,793	05/11/2025	1.D FE

STATEMENT AS OF JUNE 30, 2021 OF THE UNITED GUARANTY RESIDENTIAL INSURANCE COMPANY

SCHEDULE D - PART 4

Show All Long-Term Bonds and Stock Sold, Redeemed or Otherwise Disposed of During the Current Quarter

1	2	3	4	5	6	7	8	9	10	Change In Book/Adjusted Carrying Value					16	17	18	19	20	21	22
										11	12	13	14	15							
CUSIP Identification	Description	For- eign	Disposal Date	Name of Purchaser	Number of Shares of Stock	Consid- eration	Par Value	Actual Cost	Prior Year Book/ Adjusted Carrying Value	Unrealized Valuation Increase/ (Decrease)	Current Year's (Amor- tization)/ Accretion	Current Year's Other Than Temporary Impairment Recogn- ized	Total Change in Book/ Adjusted Carrying Value (11 + 12 - 13)	Total Foreign Exchange Change in Book /Adjusted Carrying Value	Book/ Adjusted Carrying Value at Disposal Date	Foreign Exchange Gain (Loss) on Disposal	Realized Gain (Loss) on Disposal	Total Gain (Loss) on Disposal	Bond Interest/ Stock Dividends Received During Year	Stated Con- tractual Maturity Date	NAIC Desig- nation, NAIC Desig- nation Modifier and SVO Admini- strative Symbol
172967-GK-1	CITIGROUP INC		06/15/2021	U.S. BANCORP INVESTMENTS, INC.		521,200	500,000	516,860	508,398	0	(2,409)	0	(2,409)	0	505,989	0	15,211	15,211	17,831	07/30/2022	2.B FE
17327C-AM-5	CITIGROUP INC		06/09/2021	CITIGROUP GLOBAL MARKETS INC.		4,943,650	5,000,000	5,000,000	0	0	0	0	0	0	5,000,000	0	(56,350)	(56,350)	20,726	01/28/2027	2.A FE
233331-BG-1	DTE ENERGY CO		06/22/2021	Various		3,487,540	3,500,000	3,495,765	3,496,102	0	374	0	374	0	3,496,476	0	(8,936)	(8,936)	19,060	06/01/2025	2.B FE
233851-DY-7	DAIMLER FINANCE NORTH AMERICA LLC		04/21/2021	BARCLAYS CAPITAL INC.		4,082,040	4,000,000	3,992,560	3,994,536	0	755	0	755	0	3,995,291	0	86,750	86,750	43,361	03/10/2023	2.A FE
24422E-VN-6	JOHN DEERE CAPITAL CORP		04/30/2021	J.P.MORGAN SECURITIES		1,000,130	1,000,000	999,289	0	0	41	0	41	0	999,330	0	800	800	750	01/17/2024	1.F FE
25389J-AR-7	DIGITAL REALTY TRUST LP		06/03/2021	MORGAN STANLEY & COMPANY		3,572,736	3,200,000	3,197,568	3,198,312	0	98	0	98	0	3,198,410	0	374,326	374,326	96,036	08/15/2027	2.B FE
26078J-AC-4	DUPONT DE NEMOURS INC		06/16/2021	CITIGROUP GLOBAL MARKETS INC.		1,023,291	900,000	959,682	945,455	0	(4,166)	0	(4,166)	0	941,289	0	82,002	82,002	23,925	11/15/2025	2.A FE
26827E-AA-3	ECAF I A1 - ABS	D	06/15/2021	Paydown		726,043	726,043	662,514	665,197	0	60,846	0	60,846	0	726,043	0	0	0	10,215	06/15/2040	3.C FE
26943B-40-7	FIRST EAGLE ALTERNATIVE CAPITAL BDC INC		06/03/2021	NATL FINANCIAL SERVICES CORP (NFS)		41,423	40,625	40,625	0	0	0	0	0	0	40,625	0	798	798	0	05/25/2026	2.A FE
29278N-AH-6	ENERGY TRANSFER LP		06/17/2021	BARCLAYS CAPITAL INC.		2,454,278	2,250,000	2,242,035	2,244,706	0	708	0	708	0	2,245,414	0	208,864	208,864	69,188	04/15/2024	2.C FE
29278N-AP-8	ENERGY TRANSFER LP		05/27/2021	CITIGROUP GLOBAL MARKETS INC.		4,212,680	4,000,000	4,006,185	4,005,058	0	(463)	0	(463)	0	4,004,594	0	208,086	208,086	63,156	05/15/2025	2.C FE
30231G-AT-9	EXXON MOBIL CORP		06/01/2021	WELLS FARGO ADVISORS LLC		5,983,010	5,500,000	5,531,735	5,524,378	0	(1,931)	0	(1,931)	0	5,522,447	0	460,563	460,563	126,454	03/01/2026	1.D FE
369604-BV-4	GENERAL ELECTRIC CO		06/21/2021	BANK OF AMERICA SECURITIES		1,018,758	925,000	944,647	942,850	0	(1,257)	0	(1,257)	0	941,592	0	77,166	77,166	20,566	05/01/2027	2.A FE
37045X-BX-3	GENERAL MOTORS FINANCIAL COMPANY INC		06/07/2021	CITIGROUP GLOBAL MARKETS INC.		545,875	540,000	549,185	543,457	0	(1,009)	0	(1,009)	0	542,449	0	3,427	3,427	3,700	06/30/2022	2.C FE
37045X-CJ-8	GENERAL MOTORS FINANCIAL COMPANY INC		06/21/2021	JP Morgan Securities Inc.		1,960,990	1,900,000	1,898,803	1,899,388	0	189	0	189	0	1,899,577	0	61,413	61,413	64,640	07/08/2022	2.C FE
37045X-CW-4	GENERAL MOTORS FINANCIAL COMPANY INC		06/07/2021	CITIGROUP GLOBAL MARKETS INC.		540,015	500,000	499,775	499,795	0	39	0	39	0	499,833	0	40,182	40,182	18,706	03/20/2023	2.C FE
376535-AC-4	GLADSTONE CAPITAL CORP		04/09/2021	NATL FINANCIAL SERVICES CORP (NFS)		6,368	6,000	6,218	0	0	(4)	0	(4)	0	6,215	0	153	153	102	01/31/2026	2.A FE
376546-80-0	GLADSTONE INVESTMENT CORP		05/14/2021	NATL FINANCIAL SERVICES CORP (NFS)		260	250	250	0	0	0	0	0	0	250	0	10	10	2	05/01/2026	2.A FE
38136F-AU-7	GLM 1 AR - CDO	C	04/13/2021	Paydown		6,000,000	6,000,000	6,000,000	6,000,000	0	0	0	0	0	6,000,000	0	0	0	32,982	04/20/2029	1.A FE
38141G-VC-4	GOLDMAN SACHS GROUP INC		04/26/2021	Call @ 100.00		2,500,000	2,500,000	2,506,550	2,500,533	0	(533)	0	(533)	0	2,500,000	0	0	0	37,500	04/26/2022	2.A FE
38217K-AB-0	GOODG 161 B - ABS		06/15/2021	Paydown		95,447	96,759	96,759	96,708	0	(1,261)	0	(1,261)	0	95,447	0	0	0	2,584	10/15/2055	1.F FE
38217T-AA-3	GOODG 2020-1 A - ABS		06/15/2021	Paydown		71,096	71,060	71,060	71,054	0	42	0	42	0	71,096	0	0	0	958	04/15/2055	1.A FE
38522H-AE-1	GACM 2020-FL2 B - CDO	C	04/27/2021	Various		1,017,578	1,000,000	988,047	987,943	0	(593)	0	(593)	0	987,350	0	30,229	30,229	16,379	03/16/2035	1.D FE
390320-60-4	GREAT ELM CAPITAL CORP		06/28/2021	GOLDMAN		4,350	4,375	4,296	0	0	0	0	0	0	4,296	0	54	54	1	06/30/2026	2.A FE
42329G-AA-8	SNVA 171 A - ABS		06/17/2021	Paydown		5,693,687	5,398,533	5,395,995	5,395,920	0	2,613	0	2,613	0	5,398,533	0	295,153	295,153	197,052	09/20/2049	1.F FE
44045A-40-9	HORIZON TECHNOLOGY FINANCE CORP		05/05/2021	NATL FINANCIAL SERVICES CORP (NFS)		58,972	57,325	57,325	0	0	0	0	0	0	57,325	0	1,647	1,647	0	03/30/2026	2.A FE
459200-KH-3	INTERNATIONAL BUSINESS MACHINES CORP		04/27/2021	JP Morgan Securities Inc.		2,523,100	2,500,000	2,495,375	2,495,785	0	205	0	205	0	2,495,990	0	27,110	27,110	19,361	05/15/2027	1.F FE
46090R-AA-2	INVESTCORP CREDIT MANAGEMENT BDC INC		06/28/2021	Various		401,125	398,000	395,823	0	0	69	0	69	0	395,892	0	5,233	5,233	4,627	04/01/2026	2.A FE
46647P-AP-1	JPMORGAN CHASE & CO		05/25/2021	BANK OF AMERICA SECURITIES		4,710,370	4,450,000	4,476,344	4,465,100	0	(2,536)	0	(2,536)	0	4,462,563	0	247,806	247,806	94,145	04/23/2024	1.F FE
477143-AH-4	JBLU 2019-1 AA - ABS		05/15/2021	Paydown		73,157	73,157	73,157	73,157	0	0	0	0	0	73,157	0	0	0	1,006	11/15/2033	1.F FE
478160-QN-2	JOHNSON & JOHNSON		04/22/2021	RBC CAPITAL MARKETS		3,217,955	3,250,000	3,246,458	3,246,705	0	220	0	220	0	3,246,924	0	(28,969)	(28,969)	11,966	09/01/2025	1.A FE
494368-CC-5	KIMBERLY-CLARK CORP		04/21/2021	BANK OF AMERICA SECURITIES		3,911,280	4,000,000	4,000,000	4,000,000	0	0	0	0	0	4,000,000	0	(88,720)	(88,720)	25,900	09/15/2027	1.F FE
49456B-AF-8	KINDER MORGAN INC		04/19/2021	MUFG SECURITIES AMERICAS INC.		839,288	750,000	808,695	797,418	0	(3,266)	0	(3,266)	0	794,152	0	45,135	45,135	12,542	06/01/2025	2.B FE
50543L-AA-0	LAFI 2016 A1 - ABS	C	06/15/2021	Paydown		96,988	96,988	98,625	97,047	0	(59)	0	(59)	0	96,988	0	0	0	1,772	01/15/2042	2.A FE
53948N-AA-1	LPSLT 2020-3 A - ABS	C	06/20/2021	Paydown		180,717	180,717	180,642	180,642	0	75	0	75	0	180,717	0	0	0	2,172	12/20/2047	1.F FE
548661-DX-2	LOWE'S COMPANIES INC		06/17/2021	BARCLAYS CAPITAL INC.		2,728,985	2,805,000	2,803,008	2,803,057	0	118	0	118	0	2,803,175	0	(74,191)	(74,191)	24,209	04/15/2028	2.A FE

STATEMENT AS OF JUNE 30, 2021 OF THE UNITED GUARANTY RESIDENTIAL INSURANCE COMPANY

SCHEDULE D - PART 4

Show All Long-Term Bonds and Stock Sold, Redeemed or Otherwise Disposed of During the Current Quarter

1	2	3	4	5	6	7	8	9	10	Change In Book/Adjusted Carrying Value					16	17	18	19	20	21	22
										11	12	13	14	15							
CUSIP Identification	Description	For- eign	Disposal Date	Name of Purchaser	Number of Shares of Stock	Consid- eration	Par Value	Actual Cost	Prior Year Book/ Adjusted Carrying Value	Unrealized Valuation Increase/ (Decrease)	Current Year's (Amor- tization)/ Accretion	Current Year's Other Than Temporary Impairment Recogn- ized	Total Change in Book/ Adjusted Carrying Value (11 + 12 - 13)	Total Foreign Exchange Change in Book /Adjusted Carrying Value	Book/ Adjusted Carrying Value at Disposal Date	Foreign Exchange Gain (Loss) on Disposal	Realized Gain (Loss) on Disposal	Total Gain (Loss) on Disposal	Bond Interest/ Stock Dividends Received During Year	Stated Con- tractual Maturity Date	NAIC Desig- nation, NAIC Desig- nation Modifier and SVO Admini- strative Symbol
55336V-BR-0	MPLX LP		06/02/2021	MORGAN STANLEY & CO. LLC		5,060,300	5,000,000	4,989,250	4,989,954	.0	.788	.0	.788	.0	4,990,742	.0	.69,558	.69,558	.69,514	.03/01/2026	2.B FE
55952Y-AP-2	MAGNE 8RR AR2 - CDO	C	04/15/2021	CITIGROUP GLOBAL MARKETS INC.		12,000,000	12,000,000	11,930,400	11,805,255	.0	.20,843	.0	.20,843	.0	11,826,098	.0	.173,902	.173,902	.75,507	.04/15/2031	1.A FE
617446-BQ-5	MORGAN STANLEY		04/01/2021	GOLDMAN		3,299,882	3,189,000	3,207,224	3,204,889	.0	.(922)	.0	.(922)	.0	3,203,968	.0	.95,914	.95,914	.30,624	.04/28/2026	1.F FE
61946C-AA-0	MSA1C 191 A - ABS		06/20/2021	Paydown		.61,390	.61,390	.61,369	.61,371	.0	.19	.0	.19	.0	.61,390	.0	.0	.0	.1,097	.12/21/2043	1.F FE
61946F-AA-3	MSA1C 2018-1 A - ABS		06/20/2021	Paydown		.65,410	.65,410	.65,406	.65,406	.0	.3	.0	.3	.0	.65,410	.0	.0	.0	.1,067	.06/22/2043	1.F FE
61946N-AA-6	MSA1C 2020-1 A - ABS		06/20/2021	Paydown		.282,506	.282,506	.282,496	.282,496	.0	.10	.0	.10	.0	.282,506	.0	.0	.0	.2,445	.04/20/2046	1.D FE
620076-BT-5	MOTOROLA SOLUTIONS INC		04/29/2021	RBC CAPITAL MARKETS, LLC		.986,665	1,024,000	1,021,972	1,022,024	.0	.60	.0	.60	.0	1,022,084	.0	.(35,419)	.(35,419)	.10,991	.11/15/2030	2.C FE
620076-BU-2	MOTOROLA SOLUTIONS INC		06/21/2021	J.P. MORGAN SECURITIES INC.		.67,752	.67,000	.67,000	.0	.0	.0	.0	.0	.0	.67,000	.0	.752	.752	.148	.05/24/2031	2.C FE
629167-AE-7	NLY 19FL2 B - CDO		05/03/2021	WELLS FARGO SECURITIES LLC		.996,250	1,000,000	.979,688	.984,315	.0	.4,026	.0	.4,026	.0	.988,341	.0	.7,909	.7,909	.7,930	.02/15/2036	1.D FE
62946A-AC-8	NPRL 2017-1 A1 - ABS		06/20/2021	Paydown		.137,755	.137,755	.137,754	.137,754	.0	.1	.0	.1	.0	.137,755	.0	.0	.0	.1,841	.10/21/2047	1.F FE
62954J-AA-2	NPRL 2019-1 A1 - ABS		06/20/2021	Paydown		.86,438	.86,438	.86,438	.86,438	.0	.0	.0	.0	.0	.86,438	.0	.0	.0	.920	.09/20/2049	1.F FE
641062-AR-5	NESTLE HOLDINGS INC		05/18/2021	WELLS FARGO ADVISORS LLC		.9,826,800	10,000,000	.9,948,300	.9,951,099	.0	.3,661	.0	.3,661	.0	.9,954,759	.0	.(127,959)	.(127,959)	.42,535	.01/15/2026	1.D FE
652526-70-8	NEWTBK BUSINESS SERVICES CORP		06/21/2021	NATL FINANCIAL SERVICES CORP (NFS)		.14,586	.13,975	.13,975	.0	.0	.0	.0	.0	.0	.13,975	.0	.611	.611	.85	.02/01/2026	
65473P-AK-1	NISOURCE INC		05/17/2021	DEUTSCHE BANK SECURITIES, INC.		.3,471,265	3,500,000	3,491,320	3,491,948	.0	.647	.0	.647	.0	3,492,594	.0	.(21,329)	.(21,329)	.25,030	.08/15/2025	2.B FE
67103B-50-6	OFS CAPITAL CORP		05/18/2021	NATL FINANCIAL SERVICES CORP (NFS)		.330	.325	.311	.0	.0	.(3)	.0	.(3)	.0	.307	.0	.23	.23	.5	.10/31/2026	
67103B-60-5	OFS CAPITAL CORP		06/03/2021	NATL FINANCIAL SERVICES CORP (NFS)		.1,018	1,000	1,000	.0	.0	.0	.0	.0	.0	1,000	.0	.18	.18	.16	.09/30/2023	
68389X-BL-8	ORACLE CORP		04/22/2021	RBC CAPITAL MARKETS SUNTRUST ROBINSON		.4,683,510	4,500,000	4,347,450	4,423,111	.0	.8,661	.0	.8,661	.0	4,431,772	.0	.251,738	.251,738	.66,300	.09/15/2023	2.A FE
68389X-CC-7	ORACLE CORP		06/22/2021	HUMPHREY INC		.2,534,625	2,500,000	2,498,800	.0	.0	.58	.0	.58	.0	2,498,858	.0	.35,767	.35,767	.10,313	.03/25/2026	2.A FE
69346T-AJ-3	PPF 2019-5 D - CDO/CMB		06/10/2021	WELLS FARGO SECURITIES LLC		.1,998,750	2,000,000	1,985,000	.0	.0	.2,750	.0	.2,750	.0	1,987,750	.0	.11,000	.11,000	.11,927	.04/14/2036	2.B FE
694308-JT-5	PACIFIC GAS AND ELECTRIC CO		04/08/2021	BARCLAYS CAPITAL INC		.500,185	.500,000	.498,940	.0	.0	.1	.0	.1	.0	.498,941	.0	.1,244	.1,244	.1,399	.06/01/2031	2.C FE
708062-AC-8	PENNANTPARK INVESTMENT CORP		06/23/2021	Various		.255,973	.254,000	.252,585	.0	.0	.22	.0	.22	.0	.252,608	.0	.3,365	.3,365	.998	.05/01/2026	
70806A-AA-4	PENNANTPARK FLOATING RATE CAPITAL LTD		06/01/2021	Various		.329,553	.327,000	.325,172	.0	.0	.48	.0	.48	.0	.325,220	.0	.4,332	.4,332	.1,988	.04/01/2026	
709599-BL-7	PENSKE TRUCK LEASING CO LP		05/18/2021	U.S. BANCORP INVESTMENTS, INC.		.946,290	.955,000	.953,462	.953,518	.0	.114	.0	.114	.0	.953,632	.0	.(7,342)	.(7,342)	.6,494	.11/15/2025	2.B FE
713448-EQ-7	PEPSICO INC		04/08/2021	DEUTSCHE BANK SECURITIES, INC.		.1,054,870	1,000,000	.999,290	.999,397	.0	.38	.0	.38	.0	.999,435	.0	.55,435	.55,435	.12,688	.03/19/2025	1.E FE
744573-AP-1	PUBLIC SERVICE ENTERPRISE GROUP INC		06/09/2021	WELLS FARGO ADVISORS LLC		.495,980	.500,000	.498,875	.498,959	.0	.98	.0	.98	.0	.499,057	.0	.(3,077)	.(3,077)	.3,300	.08/15/2025	2.B FE
75383H-AA-9	RPTOR I A - ABS	C	03/23/2021	Paydown		.0	.0	.0	.38	.0	.(38)	.0	.(38)	.0	.0	.0	.0	.0	.3	.08/23/2044	3.A FE
776743-AM-8	ROPER TECHNOLOGIES INC		04/16/2021	BANK OF AMERICA SECURITIES		.3,965,600	4,000,000	3,994,720	3,995,068	.0	.309	.0	.309	.0	3,995,376	.0	.(29,776)	.(29,776)	.25,444	.09/15/2025	2.B FE
776743-AN-6	ROPER TECHNOLOGIES INC		04/23/2021	Jane Street		.3,899,640	4,000,000	3,994,400	3,994,661	.0	.245	.0	.245	.0	3,994,906	.0	.(95,266)	.(95,266)	.36,711	.09/15/2027	2.B FE
78355H-KG-3	RYDER SYSTEM INC		04/12/2021	CITIGROUP GLOBAL MARKETS INC.		.2,839,158	2,700,000	2,692,710	2,696,707	.0	.416	.0	.416	.0	.2,697,124	.0	.142,034	.142,034	.56,865	.03/01/2023	2.B FE
78403D-AL-4	SBATOW 171 1C - RMBS		06/09/2021	Paydown		.15,000,000	.15,000,000	.14,996,780	.14,999,047	.0	.953	.0	.953	.0	.15,000,000	.0	.0	.0	.200,640	.04/09/2047	1.F FE
822582-CC-4	SHELL INTERNATIONAL FINANCE BV	C	06/24/2021	Various		.8,343,800	8,000,000	.7,977,280	.7,982,312	.0	.2,009	.0	.2,009	.0	.7,984,321	.0	.359,479	.359,479	.96,667	.11/07/2024	1.D FE
86745N-AA-6	SNVA 2020-1 A - ABS		04/30/2021	Paydown		.14,465	.14,465	.14,460	.14,460	.0	.5	.0	.5	.0	.14,465	.0	.0	.0	.242	.02/01/2055	1.G FE
86745P-AA-1	SNVA 2020-2 A - ABS		04/30/2021	Paydown		.10,163	.10,163	.10,170	.10,170	.0	.(6)	.0	.(6)	.0	.10,163	.0	.0	.0	.116	.11/01/2055	1.G FE
86746C-AA-9	SNVA 20A A - ABS		06/20/2021	Paydown		.56,662	.56,662	.56,658	.56,658	.0	.4	.0	.4	.0	.56,662	.0	.0	.0	.680	.06/20/2047	1.G FE
86746E-AA-5	SUHL-21A-A - ABS		06/20/2021	Paydown		.62,965	.62,965	.62,964	.0	.0	.1	.0	.1	.0	.62,965	.0	.0	.0	.283	.02/20/2048	1.G FE
872480-AA-6	TIF 201 A - ABS		06/21/2021	Paydown		.46,875	.46,875	.47,141	.47,140	.0	.(265)	.0	.(265)	.0	.46,875	.0	.0	.0	.409	.08/21/2045	1.F FE

STATEMENT AS OF JUNE 30, 2021 OF THE UNITED GUARANTY RESIDENTIAL INSURANCE COMPANY

SCHEDULE D - PART 4

Show All Long-Term Bonds and Stock Sold, Redeemed or Otherwise Disposed of During the Current Quarter

1	2	3	4	5	6	7	8	9	10	Change In Book/Adjusted Carrying Value					16	17	18	19	20	21	22
										11	12	13	14	15							
CUSIP Identification	Description	For- eign	Disposal Date	Name of Purchaser	Number of Shares of Stock	Consid- eration	Par Value	Actual Cost	Prior Year Book/ Adjusted Carrying Value	Unrealized Valuation Increase/ (Decrease)	Current Year's (Amor- tization)/ Accretion	Current Year's Other Than Temporary Impairment Recogn- ized	Total Change in Book/ Adjusted Carrying Value (11 + 12 - 13)	Total Foreign Exchange Change in Book /Adjusted Carrying Value	Book/ Adjusted Carrying Value at Disposal Date	Foreign Exchange Gain (Loss) on Disposal	Realized Gain (Loss) on Disposal	Total Gain (Loss) on Disposal	Bond Interest/ Stock Dividends Received During Year	Stated Con- tractual Maturity Date	NAIC Desig- nation, NAIC Desig- nation Modifier and SVO Admini- strative Symbol
87275Q-AE-7	TRTX 2018-FL2 B - CMBS		05/18/2021	WELLS FARGO SECURITIES LLC		499,844	500,000	500,288	.0	.0	(614)	.0	(614)	.0	499,674	.0	170	170	3,065	11/18/2037	1.D FE
880451-AZ-2	TENNESSEE GAS PIPELINE COMPANY LLC		06/01/2021	SEAPORT GROUP SECURITIES, LLC		5,104,850	5,000,000	5,309,550	5,297,730	.0	(12,737)	.0	(12,737)	.0	5,284,994	.0	(180,144)	(180,144)	109,556	03/01/2030	2.B FE
88315L-AL-2	TMCL 211 A - RMBS	C	06/20/2021			40,000	40,000	39,909	.0	.0	.91	.0	.91	.0	40,000	.0	.0	.0	162	02/20/2046	1.F FE
88606W-AA-0	TBOLT 2017 A - ABS	C	06/15/2021			69,370	69,370	69,367	69,409	.0	(39)	.0	(39)	.0	69,370	.0	.0	.0	1,221	05/17/2032	1.G FE
89114Q-CB-2	TORONTO-DOMINION BANK	C	06/28/2021	BMO Capital Markets		3,748,150	3,500,000	3,495,520	3,497,059	.0	434	.0	434	.0	3,497,493	.0	250,657	250,657	91,316	03/11/2024	1.D FE
89656F-AC-0	TRL 2013-1 A1 - ABS		06/15/2021			1,313,269	1,313,269	1,302,702	1,304,637	.0	8,632	.0	8,632	.0	1,313,269	.0	.0	.0	25,596	07/15/2043	1.F FE
89657A-AC-0	TRL 2020-1 A - ABS		06/17/2021			30,733	30,733	30,726	30,726	.0	.7	.0	.7	.0	30,733	.0	.0	.0	251	06/17/2048	1.F FE
89680H-AA-0	TCF 2020-1 A - ABS		06/20/2021			42,500	42,500	43,149	.0	.0	(649)	.0	(649)	.0	42,500	.0	.0	.0	224	09/20/2045	1.F FE
89680H-AE-2	TCF 211 A - RMBS		06/20/2021			63,750	63,750	63,630	.0	.0	120	.0	120	.0	63,750	.0	.0	.0	211	03/20/2046	1.F FE
89690E-AF-4	TRMF 2017-1 A1 - ABS		06/15/2021			591,890	591,890	591,881	.0	.0	.1	.0	.1	.0	591,890	.0	.0	.0	6,797	08/15/2047	1.F FE
90352W-AD-6	STEAM 2021-1 A - ABS		06/28/2021			25,576	25,576	25,575	.0	.0	.1	.0	.1	.0	25,576	.0	.0	.0	149	02/28/2051	1.F FE
904764-BG-1	UNILEVER CAPITAL CORP		04/01/2021	NatWest Markets		3,387,069	3,150,000	3,127,257	3,136,345	.0	1,066	.0	1,066	.0	3,137,411	.0	249,658	249,658	59,434	03/07/2024	1.E FE
90931G-AA-7	UNITED AIRLINES PASS THROUGH TRUST 2020-		04/15/2021			38,124	38,124	39,438	26,036	.0	(1,315)	.0	(1,315)	.0	38,124	.0	.0	.0	887	10/15/2027	1.G FE
90932J-AA-0	UNITED AIRLINES 2019-2 PASS THROUGH TRUS		05/01/2021			120,631	120,631	120,631	120,631	.0	.0	.0	.0	.0	120,631	.0	.0	.0	1,629	11/01/2033	1.E FE
90932M-AA-3	UNITED AIRLINES 2019-2 PASS THROUGH TRUS		05/01/2021			128,000	128,000	128,000	128,000	.0	.0	.0	.0	.0	128,000	.0	.0	.0	1,856	11/01/2029	2.A FE
90932V-AA-3	UNITED AIRLINES PASS THROUGH TRUST 2020-		04/15/2021			3,245	3,245	3,245	.0	.0	.0	.0	.0	.0	3,245	.0	.0	.0	33	07/15/2027	2.C FE
911312-BY-1	UNITED PARCEL SERVICE INC		05/25/2021	LLC		2,995,425	2,500,000	2,490,575	2,491,186	.0	311	.0	311	.0	2,491,497	.0	503,928	503,928	72,931	04/01/2030	1.G FE
92343V-GH-1	VERIZON COMMUNICATIONS INC		06/16/2021	Jane Street		499,665	492,000	491,779	.0	.0	.7	.0	.7	.0	491,786	.0	7,880	7,880	2,468	03/22/2028	2.A FE
92854V-AA-3	VSLR 181 A - ABS		04/30/2021			50,989	50,989	50,973	50,971	.0	.18	.0	.18	.0	50,989	.0	.0	.0	1,206	04/30/2048	1.G FE
94353W-AA-3	WAAV 171 A - ABS		06/15/2021			11,884	11,884	10,873	10,879	.0	1,005	.0	1,005	.0	11,884	.0	.0	.0	195	11/15/2042	2.B FE
95040Q-AM-6	WELLTOWER INC		05/13/2021	MORGAN STANLEY & CO.		1,907,331	1,890,000	1,880,909	.0	.0	.77	.0	.77	.0	1,880,986	.0	26,345	26,345	7,644	06/01/2031	2.A FE
G4301U-AF-1	HARBOUR AIRCRAFT INVESTMENTS LIMITED - A		05/15/2021			3,189	3,189	3,169	3,171	.0	.18	.0	.18	.0	3,189	.0	.0	.0	53	11/15/2037	3.C FE
8399999. Subtotal - Bonds - Industrial and Miscellaneous (Unaffiliated)						268,826,715	261,259,320	262,799,995	227,833,415	10,148	57,150	0	67,298	0	262,682,904	0	6,143,811	6,143,811	3,497,407	XXX	XXX
8399997. Total - Bonds - Part 4						696,502,944	689,643,433	690,593,950	379,885,225	10,148	(62,808)	0	(52,660)	0	690,351,373	0	6,151,571	6,151,571	3,794,439	XXX	XXX
8399998. Total - Bonds - Part 5						XXX	XXX	XXX	XXX	XXX	XXX	XXX	XXX	XXX	XXX	XXX	XXX	XXX	XXX	XXX	XXX
8399999. Total - Bonds						696,502,944	689,643,433	690,593,950	379,885,225	10,148	(62,808)	0	(52,660)	0	690,351,373	0	6,151,571	6,151,571	3,794,439	XXX	XXX
8999997. Total - Preferred Stocks - Part 4						0	XXX	0	0	0	0	0	0	0	0	0	0	0	0	XXX	XXX
8999998. Total - Preferred Stocks - Part 5						XXX	XXX	XXX	XXX	XXX	XXX	XXX	XXX	XXX	XXX	XXX	XXX	XXX	XXX	XXX	XXX
8999999. Total - Preferred Stocks						0	XXX	0	0	0	0	0	0	0	0	0	0	0	0	XXX	XXX
9799997. Total - Common Stocks - Part 4						0	XXX	0	0	0	0	0	0	0	0	0	0	0	0	XXX	XXX
9799998. Total - Common Stocks - Part 5						XXX	XXX	XXX	XXX	XXX	XXX	XXX	XXX	XXX	XXX	XXX	XXX	XXX	XXX	XXX	XXX
9799999. Total - Common Stocks						0	XXX	0	0	0	0	0	0	0	0	0	0	0	0	XXX	XXX
9899999. Total - Preferred and Common Stocks						0	XXX	0	0	0	0	0	0	0	0	0	0	0	0	XXX	XXX
9999999 - Totals						696,502,944	XXX	690,593,950	379,885,225	10,148	(62,808)	0	(52,660)	0	690,351,373	0	6,151,571	6,151,571	3,794,439	XXX	XXX

Schedule DB - Part A - Section 1 - Options, Caps, Floors, Collars, Swaps and Forwards Open
N O N E

Schedule DB - Part B - Section 1 - Futures Contracts Open
N O N E

Schedule DB - Part B - Section 1B - Brokers with whom cash deposits have been made
N O N E

Schedule DB - Part D - Section 1 - Counterparty Exposure for Derivative Instruments Open
N O N E

Schedule DB - Part D-Section 2 - Collateral for Derivative Instruments Open - Pledged By
N O N E

Schedule DB - Part D-Section 2 - Collateral for Derivative Instruments Open - Pledged To
N O N E

Schedule DB - Part E - Derivatives Hedging Variable Annuity Guarantees
N O N E

Schedule DL - Part 1 - Reinvested Collateral Assets Owned
N O N E

Schedule DL - Part 2 - Reinvested Collateral Assets Owned
N O N E

SCHEDULE E - PART 1 - CASH

Month End Depository Balances

1	2	3	4	5	Book Balance at End of Each Month During Current Quarter			9
					6	7	8	
					First Month	Second Month	Third Month	
Depository	Code	Rate of Interest	Amount of Interest Received During Current Quarter	Amount of Interest Accrued at Current Statement Date				*
Bank of America Concord, CA		0.000	0	0	9,304,226	16,552,829	10,649,828	XXX
Wells Fargo Charlotte, NC		0.000	0	0	175,635	136,973	50,907	XXX
Bank of New York Mellon New York, NY		0.000	0	0	8,427,040	7,790,887	8,648,336	XXX
0199998. Deposits in ... 0 depositories that do not exceed the allowable limit in any one depository (See instructions) - Open Depositories	XXX	XXX	0	0	0	0	0	XXX
0199999. Totals - Open Depositories	XXX	XXX	0	0	17,906,901	24,480,689	19,349,071	XXX
0299998. Deposits in ... 0 depositories that do not exceed the allowable limit in any one depository (See instructions) - Suspended Depositories	XXX	XXX	0	0	0	0	0	XXX
0299999. Totals - Suspended Depositories	XXX	XXX	0	0	0	0	0	XXX
0399999. Total Cash on Deposit	XXX	XXX	0	0	17,906,901	24,480,689	19,349,071	XXX
0499999. Cash in Company's Office	XXX	XXX	XXX	XXX	0	0	0	XXX
0599999. Total - Cash	XXX	XXX	0	0	17,906,901	24,480,689	19,349,071	XXX

SCHEDULE E - PART 2 - CASH EQUIVALENTS

[illegible]